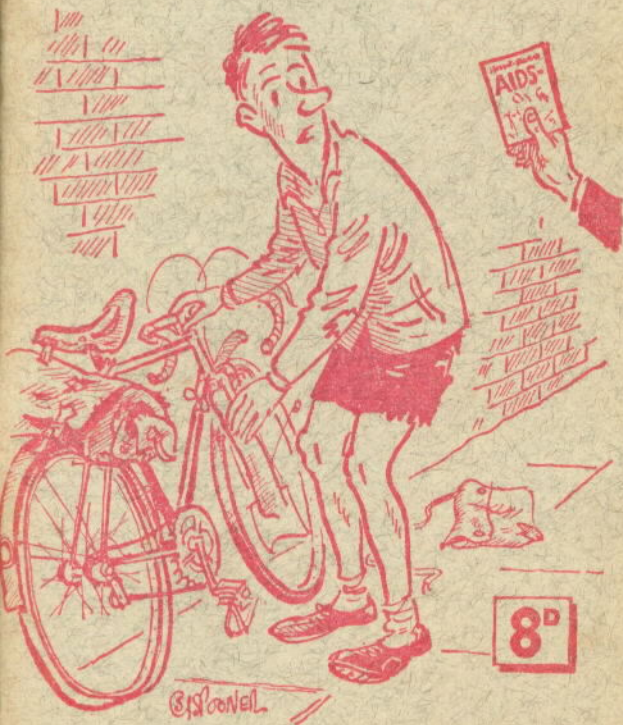


T.W.

BIKE-RIDERS 'AIDS' 1963



8^D

Tottenham

Lightweights.

Issued by :

The HOLDSWORTHY Co. Ltd., London, S.E.20

WHOLESALE DISTRIBUTORS OF LIGHTWEIGHT CYCLES.
ACCESSORIES AND CLOTHING TO THE RETAIL TRADE.

All enquiries should be made to—

YOUR LOCAL AGENT

WHO CAN OBTAIN ANY OF THE ITEMS LISTED

**P. HANLON,
175 HIGH RD,
TOTTENHAM,
LONDON.
N.15.**

BIKE-RIDERS 'AIDS'

An annual guide to the best of British and Continental cycle equipment and clothing.

This year extended to 88 pages to include even more items of interest. The pocket size format has been retained so that your AIDS can be carried at all times ready for instant reference and the stiff cover will preserve it throughout the year.

NEVER BUY ANYTHING WITHOUT FIRST HAVING A LOOK IN 'AIDS'

An enthusiastic Staff of Club Cyclists in close touch with all cycling 'types' at Home and friendly relations enjoyed with many leading riders who visit the Continent enables us to keep abreast of the constantly changing trends inherent to our sport. In addition the 'Salons' at Milan and Paris are regularly attended and it is therefore possible to give you the benefit of worthwhile introductions by direct importation or adaptation into British designs.

YOU CANNOT DO BETTER THAN FOLLOW 'AIDS'

Although every effort will be made to maintain prices as listed they are subject to alteration without notice and will be charged to the Retailer at the price ruling at the time of despatch.

Purchase Tax, where applicable, is included in the prices shown.

Specialities imported and distributed carry these famous names.

CAMPAGNOLO FIAMME REGINA D'ALESSANDRO
LYOTARD CINELLI UNIVERSAL IL PRIMO JANTEX
FULMINE CAMPIONE CORSA ALLEZ BINDA INOX
CANETTI FIFON CRODONI & WORTHY CLOTHING

INDEX

Ankle Socks ...	3	Lubricators ...	71
Arm Warmers ...	13	Maps ...	72
Badges ...	3	Massage Cream ...	23
Bags ...	31/32/34	Mass Start Caps ...	3
" Carriers & Supports ...	33/35	Mitts ...	8/9
" Bath Salts ...	23	" Racing ...	28/29
Bells ...	35	Mudguard Extensions ...	63
Bends ...	61	Oilers ...	71
Berets ...	3	Pannier Bags & Carriers ...	34/35
Bottles—Feeding ...	36	" " Quick Release ...	35
" Cages ...	36	Pantalons ...	9/10
Bracket Fittings ...	37/38	Pedals ...	72/73/74
Brakes & Sundries ...	38-43	Plus Ones ...	10
Capes ...	4/5	Pumps ...	75
Cape Roll ...	32	" Connectors & Clips ...	58/75
Carriers—Bag ...	33/35	Racing Caps ...	3
" Bottle ...	36	" Jerseys ...	12
" Tubular ...	32/87	" Shorts ...	14
Chains ...	50	" Mitts ...	28/29
Chainwheel Sets ...	44-49	Rims Sprint ...	76
Cogs ...	51/52/65	" Wired On ...	77
Connections ...	75	" Cement ...	87
Cotter Pins ...	50	" Tape ...	87
Cranks ...	44-49	Rivet Extractors ...	50
Crash Hats ...	13	Saddles & Sundries ...	78/79
Derailleurs ...	53-60	Seat Pins ...	79
Drinking Tubes ...	36	Shirts ...	15
Dynamo Sets ...	70/71	Shorts ...	14-17
Embrocation, etc. ...	23	Shoes ...	18-22
Entry Forms ...	50	Shoe Plates ...	23
Extensions (Handlebar) ...	62/63	Shoulder Bags ...	32
" (Mudguard) ...	63	Socks ...	3
Feeding Bottles ...	36	Sou'westers ...	4
Flint Catchers ...	88	Spats ...	4/5
Freewheels ...	51/52	Spanners ...	80
Front Changers ...	53/55/59/60	Sprint Wheel Carriers ...	76
Gears & Sundries ...	53-60	Sprockets ...	51/52/65
Gloves ...	8/9	Stems ...	62/63
" —Racing ...	28/29	Stockings ...	24
Goggles ...	30	Sun Specs ...	30
Handlebar Bends ...	61	Sweaters ...	27
" Stems or ...	62/63	Tape—Handlebar ...	62
" Extensions ...	62/63	" Double Sided Sticky ...	87
" Tape ...	62	" Rim ...	77/87
" End Plugs ...	62	Toe Straps ...	81
Handi-bags ...	34	" Clips ...	81
Head Fittings ...	64/65	Tools ...	80
Honking Rubbers ...	39/41/42/43	Touring Bags ...	31/34
Hose ...	24/25	Track Mitts ...	28/29
Hubs ...	66-69	" Nuts ...	65
" Cogs ...	65	" Shorts ...	14
" Gears ...	60	" Suits ...	26/27
" Track & Wing Nuts ...	65	" Vests ...	12
Jackets ...	6/7	Training Suits ...	26/27
Jerseys ...	12/27	" Trousers ...	11/26/27
Kiddie Cranks ...	50	Tubulars ...	82-86
Lamp Brackets ...	71	Tubular Carriers ...	32/87
Lamps—Lucifer ...	70/71	Tyre Savers ...	88
Leg Warmers ...	13/26/27	Tyres ...	88
Leggings ...	4/5	Wing Nuts ...	65
		Woollen Racing Legs ...	13/27

CLOTHING

ANKLE SOCKS (Elastic Tops—Nylon Spliced)

NYLON Extensible. In an attractive fancy knit pattern. Always a good fit, the 'stretch' ensures they will not sag. One size only. Pursuit length, 7" leg ... 5/11

NYLON 'SPRINT-SOX'. A shorter 5" leg length in fancy knit rib, with wide elasticated top. One size 5/6

FAUSTO. The Continental length Pursuit sock in strong cotton with fine rib for close ankle fit. **White** ... 3/9

RAYON MIXTURE. Smart silky finish, in the longer length. Full range of sizes. **White** ... 2/11

BADGES



Campagnolo signature on a globe surrounded by the World Championship cols. Mounted on a Blue backing on White silk. Size as illustration 1/-

BERETS

Designed for cyclists the special close fitting crown will not blow about in the wind and absorbs very little wet in the rain. Fitted with a leather sweat-band for comfort in use, a 100% wool beret in **Wine, Navy, Olive Green, Nigger and Black.** Three sizes ... 6/4



"CAMPIONE" RACING CAPS

Genuine Italian racing caps available either with or without the word "Campione" (Champion) printed across the front of the cap and under-side of the peak so that it reads right side up when peak is turned in the Continental fashion (as illustrated).

In cool **White pique** with silky faced rayon lining and elastic at back for easy fit. One size ... 5/9
Similar cap in **White, Blue or Red pique** with two narrow contrasting colour bands running over the crown 6/-

CAPESETS AND RAINWEAR

QUELDA-LUXE. Made from a light cotton material impregnated with P.V.C. for complete waterproofing and strength, the result is a comparatively light weight cape which will withstand the most rigorous usage. Side seams are covered with a narrow plastic strip welded into position so that not a drop of water can penetrate the stitching. A full width ventilated yoke across the back protects the shoulders from condensation and the neck opening is closed by a diagonally set zip under a protective flap. Size: 45" front with full shoulders and wide hem allowing more room than average.

Black or Bronze ... 43/8

QUELDA-LUXE SPATS

In P.V.C. material as above, designed as Quelspats illustrated opposite. Front and rear seams plastic covered. Leather strap underfoot, elastic under knee, press stud fastening.

Black or Bronze 16" ... 14/-

Longer Leg 18" ... 15/-



QUELDA

QUELDA CAPE

The popular Worthy plastic cape is really tough and nearly untearable. All seams are welded with no stitching to allow leakages. The diagonally fitted zip has a pull-tag and is covered to stop any seepage. The special full cut, wide shoulders and ventilated back guard against condensation. **Gold or Black.** Size 45" only 24/9

SPECIAL JUNIOR CAPE

In a lighter plastic, fully welded with press-stud fastened neck opening. **Matt Gold, 39" front only** ... 18/-

QUELDA SOU'WESTER

In light plastic **Gold or Black** to complete Quelda outfit. Practical if not elegant. Sizes 6 $\frac{3}{4}$ " and 7" ... 5/1

QUELDA LEGGINGS

In strong plastic with gusset opening press-stud fastened. Reinforced at instep. **Black or Gold, 30" and 32" ... 21/-**

QUEL-SPATS (as illustrated)

Press-stud fastened around calf, elastic underknee. Welded reinforcements.

Black or Gold Std. 16" 10/-

Longer Leg 18" ... 11/-

SADDLE COVER. Keep your saddle dry—one soaking does more harm than a season's riding. **Black or Gold 1/6**

QUEL-PLAS CAPE

A well cut design in tough matt finish plastic with a completely waterproof gussett type neck fastened with a specially moulded button. Thumb loops and a loop for waist tape are provided. Packed in a carrying envelope. **42" for the smaller rider (smaller skirt, etc.). Gold 17/11**
45" with ample skirt and shoulder width. Gold only 18/11
48" front, measurements sized up to suit. Gold 19/11

QUEL-PLAS LEGGINGS

In matt Gold to match cape. Shaped into the ankle there is no opening to let in water, a specially folded gusset allows easy removal. Side straps have button holes and belt tunnels. Tough strap fits beneath instep. **Gold 9/9**

QUEL-PLAS OVERKNEE SPATS

Covering the front of the leg from a slide-in toe piece to well over the knee, these spats offer protection from the bulk of wet thrown up when riding. Positioned by adjustable elastic straps including one over the knee. **Gold only ... 8/9**

QUEL-PLAS RACING JACKET

Shaped like a button through shirt in **transparent plastic** with short tail at the rear, elastic at wrists, plastic buttons and draw cord at waist. Ideal for racing, training, 'soft' weather generally or when too windy for a cape **15/11**

QUEL-PLAS CYCLE COVER

Natural plastic cover that will protect all of the cycle from the elements. Reinforced loops for securing ... **29/3**

PLASTIC REPAIR OUTFITS. Handy tube of solution and transparent patching for small tears in plastic ... **1/3**



'CASUAL' CYCLING JACKETS

EVEREST

A popular jacket with two deep zipped breast pockets and ample lower pockets set on the slant for casual strolling.



A specially full cut across the shoulders gives an easy fit when riding. Full length open-ended zip and a strap and buckle adjustment on the hips allows a loose fit on the cycle with smartness when on foot. In a fine Rayon Gaberdine, lined throughout with shot silk. In Black or Smoke Grey.

Sizes 34"-42" ...	63/6
Larger sizes 44"-46" ...	67/11

SUMMIT

Similar in outside appearance to the Everest, this coat is designed for really cold weather. With a heavy quilted insulating material between the main body of the Gaberdine and the silky finished lining, this coat will keep out the coldest wind. Pockets as the Everest, all zips are tagged so they can be operated when hands are gloved. Black or Smoke Grey.

Sizes 34"-42" ...	81/3
Larger sizes 44"-46" ...	85/11



MAESTRO TRACK SUIT TOPS

Actually designed for use as a track or training suit, it has been found that the jacket part is very useful as a lightweight 'top' that can be stuffed away during the ride and used for standing about or riding home in the evenings. In a silky-faced material with fleecy lining the Maestro has a full length zip and a high neck of ribbed wool, matching cuffs and waistband ... 38/3

Maestro De Luxe as above but with inset pocket and neck, waist and cuffs in contrast bands (details page 26) 44/11

DAN RIVER Drip-Dry

Developed from the Dansheen. An American smooth lusted woven cotton fabric offset by chunky wool trimmings. The bold woollen collar is 'pegged-down' by 'Aztec' medallions so that it does not flap when in use. Cut especially for cycling the longer length sleeves and body combine with an easy fitting shoulder yoke for comfort when riding. Lined with smart poplin the jacket is washable and drip-dries into shape.

Fitted with an inside and two inset front pockets. Modern shades of **Canadian Bronze, Mid Blue or Norwegian Loden (Grey/Green)**. Small, Mens, Large or 42" 73/6



DANSHEEN. Made from cotton fabric with Danel water repellent from Dan River Co. of America, both dirt and odour resistant. Fast colours and drip-dry qualities allow regular washing. A random weave finish and neatly patterned lining are offset by bold woollen collar and cuffs. Waistband also has ribbed inset. **S.M.L. Gold 68/11**

NORWEGIAN

A really comfortable warm coat in a smart brushed Rayon/Wool mixture. Made for bike-riding both body and sleeves are longer than standard and the open-ended zip is not taken quite to the bottom of the larger sizes to allow for leg movement. Pure woollen collar and cuffs and a silky lining complete a colourful jacket

(dry cleaning is advised to keep colours bright). Two alternative shades: **Red/Green or Blue/Brown** on a Black base. Small, Men's or Large 96/6



WORTHY GLOVES



SUPREME MITTS

In a beautifully soft leather, fleecy lined and very well finished. A wrist strap with adjustable press stud fixing ensures a close fit. Strongly recommended for comfort and warmth. First finger separate. Rich Tan 29/11

RUST SHEEPSKIN MITT

Exceptional value, these mitts are made from hard-wearing first quality skins and have a gusseted thumb. Long cuffs may be turned to show the wool or left to extend over the coat sleeve. Three sizes, in Rust/Tan finish 20/6



KNITTED WRIST MITT

In a strong Hide with a warm lining and a woollen cuff which retains the warmth in the full bag mitt. A leather reinforcement takes the strain off the cuff when 'pulling on'. Tan Hide 17/11

FIRST FINGER MITT

As above but with separate first finger as illustrated. Three sizes ... 19/3

WORTHY LEATHER PALM

Close woven cotton, Black/White marl, with warm backing and ribbed wrist for warmth. Complete palm, front of fingers and side of index finger reinforced by supple Cream Leather for hard wear. Smart and practical, easily stowed away when not required. Three sizes 11/3



WORTHY COTTON

As above, but without the Leather palm, etc. Surprisingly warm. in the heavier grade marl recommended for cycling. Three sizes 5/6

WATERPROOF BACK MITT

A full bag mitt with chrome palm for hard wear and a waterproof Blue back to protect the warm reversed sheepskin lining. An elasticated wrist band retains the warmth and ensures a good fit. Smart **Blue** and **Grey** finish. Three sizes ... 22/6



HIDE/SHEEPSKIN GLOVE

A hard-wearing fleecy-lined Hide glove with smart knitted woollen wrist and reversed Sheepskin back. Finger and thumb gussets in Hide back of thumb sheepskin. First quality skins only used for long life. Three sizes. S., M. and L. ... 29/9

CRODONI PANTALONI PATTERNED TERYLENE

In 55% Terylene 45% Wool, the best lightweight 'mixture'. Neat Grey pattern with Black wool ribbing instead of elastic at the knee. Continental design with curved side and two rear pockets. Wide belt loops and zip front with 'French' bearer. Double seated. 32"-36" 85/11
Size 9 or 10 (28" or 30") 80/-

BELT for above in same material. Q/R buckle 4/10

SILICONED TWEED. In good weight hard wearing shower-proofed tweed, same design as above. Smart **Blue/Bronze** or **Gold/Bronze**. 32"-36" 65/6
Sizes 9 or 10 (28" or 30") 61/-



PANTALONS

WHIPCORD

Black or Grey.

Made from extremely tough hard wearing cotton whipcord that will stand thousands of miles of training and general riding. A narrow adjustable half belt is fitted through wide belt loops in the modern style. Two side and two rear flapped pockets. Wide elastic band, turns under, at the knee.

Gents' Only 32"-40" 58/6
9 or 10 (28" or 30") 54/6

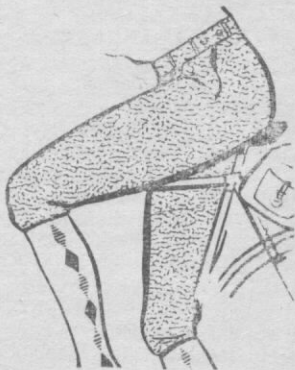


CONTINENTAL PLUS 1's

Cut closer and shorter than Pantalons, these Plus 1's have two buttoned rear inset pockets and a foam-lined shirt retaining extended waist band with elastic adjusters.

The material is Silicone Proofed with minute Green and Yellow, Red and Orange or Blue and Yellow flecks superimposed on a neat 'modern' Black and White Tweed. These attractive mixtures have a pleasing and 'different' appearance

Gents' 32"-34" 58/11
9 or 10 (28" or 30") 54/11



Ladies in the Blue and Yellow fleck pattern only. Fitted with side zip and button, two side but no hip pockets.
Sizes 26", 28", 30", 32" 58/11. Size 24" only ... 54/11

TRAINING TROUSERS

Developed from the Continental Plus ones these trousers have a similar cut at the top and adequate freedom at the knee, but then rapidly taper to the ankle where an inset zip allows a close fit that does away with the need for leg constricting clips or straps.

Siliconed TWEED

(Illustrated)

In Black and White tweed with Blue and Yellow flecks to give life this material is Perlcone Proofed against wet and dirt. Soft and warm, ideal for early training and riding down to events. The tapered leg adds to the smart appearance and does not look out of place off the cycle.

Two buttoned inset rear pockets and extended elastic adjustable waist band complete a smart garment. Fitted with double patch and foam shirt grip for riding comfort.

Sizes 32" waist ... 63/6
with 29" or 31" leg length.
9 or 10 (28" or 30") 59/2

Ladies. Made with a zip and button waist closure on one side. Hip pockets and double seat are omitted to give neater rear view. Legs are made in one length 26"/28" the zip being set up two inches from the hem to allow simple length adjustment.

Sizes. 26"-28" waist 63/6. Size 24" only ... 59/2

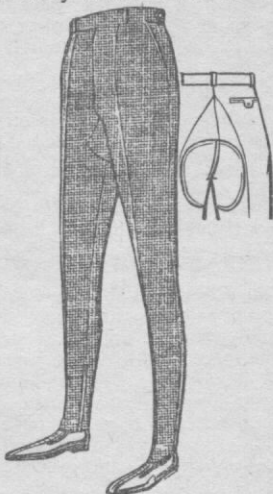
DRIP-DRY

In the popular light fawn shade this Sanforized pre-shrunk cotton material washes easily and will drip-dry into shape needing little ironing to restore the original smartness. Fitted with zip fly, extended waistband and belt loops. Two rear and two front pockets in the modern style. No double seat. 29" or 31" leg lengths.

Size 32" waist 41/10. 9 or 10 (28" or 30") 39/-

BLACK TWILL. In exactly same style and sizes as above. Hard-wearing Sanforized cotton twill. Smart and cool.

Size 32" waist 34/4. 9 or 10 (28" or 30") 32/-



RACING JERSEYS

WOOL ROAD

Close-knit from fine wool. Crew neck fitted with zip, pockets at front and rear. Collar and sleeves trimmed to match the double 3" chest bands.

In National colours:

Italy—Green with White/Red.

France—Blue with Red/White.

Belgium—Black with Yellow/Red.

Great Britain—Red with White and Blue bands ... 45/11



SPECIAL WOOL ROAD

Club Colours and designs can be made up to order in the same basic style as above. In a fine wool, with crew neck fitted with zip and short sleeves. Two pockets on chest and three (small centre pocket for pump or spanner) on the lower back. Various numbers and widths of horizontal bands may be specified. Neck and sleeves are trimmed to match. N.B. when ordering give exact details on a rough sketch: size, colours, band widths, colour of sleeves, sleeve edging, and any collar contrast 47/11

Minimum quantity two. Six or more, one design, less 2/-

SPECIAL TIME TRIAL VESTS

To order, in wool only as above, but with pockets at the rear only (minimum quantity two) ... 41/10

SPECIAL WOOL TRACK VESTS

Same basic design as above but without pockets. To special order only (minimum quantity two) ... 39/11

COTTON TRACK VEST

In-stock colours only. Made in a heavy knitted cotton with a single contrast band on chest woven into the base colour. The plain crew neck collar and edging to the short sleeves is in same colour as band. On White base, Emerald, Royal or Scarlet band. On Black base, Scarlet, Emerald or Amber band. Small Men's or Large 14/11

RACING EXTRAS

WOOLLEN ARM WARMERS

Useful on cold mornings. Saves buying a long sleeve vest and can be removed when warmer. Heavy ribbed wool. In Black, one size only ... 10/9

SPECIAL ARM WARMERS

To match 'Special' vests opposite in the same wool and stitch. May only be ordered at the same time as the vest. In any one colour of those used in the 'Special' jersey. A very practical addition to the racing wardrobe 12/11

WOOLLEN LEG WARMERS

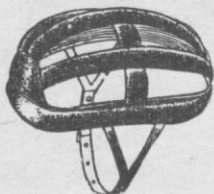
Keep your joints working smoothly on the coldest mornings. Heavy ribbed wool reaching well up the thighs. Elastic underfoot. 32", 34" or 36" leg. In Black only ... 25/9



CRASH HATS

CASQUE PRIMO

A deep-crowned Italian crash hat with sturdy protection at front and rear, cross members are also padded. Stylish and comfortable to wear, medium weight. Sizes 54-60 mm. (57 approx 6 $\frac{7}{8}$ "). Softly lined in good leather. Black ... 29/11



CASQUE FAUSTO

Italian pursuit or massed start lightweight crash hat. Chromed leather covers flat sectioned rubber bars giving full protection. A thin cross strap allows hat to be folded away during a road race. Adjustable chin strap with wide buckle. Metric sizes 54-60. Black ... 27/9



WORTHY RACING SHORTS

Worthy racing shorts are 'all-British' made from the best Continental designs. By far the most popular on the British market, they offer wonderful value. We suggest that you check the 'Worthy' label to be sure of obtaining the genuine article.

WOOLLEN PATH

Made from guaranteed colour-fast hard-wearing wool. Fitted with ample chamois seat, short legs and inside 'sower grip' pocket. Will wash well and retain a comfortably close fit. **Black only.** Sizes: 30", 32", 34", 36" 29/9

WOOLLEN ROAD

As the Path short above but with longer 'Belgium' length legs and a very deep chamois patch extending well down the inside of the legs. Two outside hip pockets. Sizes: Small, Medium and Large. **Black only** ... 35/3

'CONTINENTAL' ROAD PATTERN

Seams at the side of this short allow a seamless 'U' type crutch to be combined with a deep chamois patch. Made in a lighter weight woven wool, with long legs and an outside pocket. Sizes: Small, Medium and Large. **Black only** 38/9



HEAVY GRADE COTTON

Sizes: 32" and 34" only.

Chamois Seated for comfort and hard wear. **Black** 17/11

TAKE CARE OF YOUR SHORTS

In the interests of hygiene, comfort and preservation your shorts require washing after each time worn. Most people realise that wool needs careful laundering, CHAMOIS needs exactly the same sort of care, . . . only more so !! Hand wash in warm soapy suds, rinse in clean soapy water which should be allowed to dry naturally into the leather. Stretch gently to correct size while still damp and manipulate gently to soften the leather when dry.

AVOID Hot Water. Detergents, Washing Machines, Hard Wringing, Leaving Wet and Screwed Up, Grease

SHIRTS



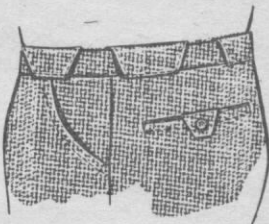
A really smart 100% cotton sports shirt with close fitting short sleeves, two button neck opening and neat collar. Omission of usual pocket and 'fancy emblem' achieves a clean appearance that allows this genuine 'sports shirt' to be used for work or leisure as well as any type of sport.

Woven to absorb perspiration, the fast colours allow regular washing. **White, Tan or Navy. Sizes S.M. L. 22/6**

SHORTS—TOURING

CRODONI PATTERNED 55% Terylene 45% Wool

Fashioned from a Bluish shade of Dark Grey with a neat pattern. This material is very light to wear but so hard wearing that no double seat is required. The Continental 'flair' for smart sports wear is demonstrated by the interesting and 'different' waist detail shown. The waist is closed by a single inside button but a 'French-bearer' takes the strain away from the deeply inset zip fly. The two side pockets have curved openings for easy use when riding. Twin inset rear pockets have shaped 'tags' that match the wide belt loops. Short, well shaped legs are 'notched' on the outside and well finished with no raw edges. **9 or 10 (28" or 30") 65/- 32", 34" or 36" ... 69/9**



BELT. With quick release buckle in same material **4/10**

WORTHY 'ABRIST' 15% Nylon 85% Rayon

A neat short, cut on very close lines, with zip fly and adjusters set in a narrow double buttoned waist band. Crease resistant 'Abrist' cloth is tested for strength, shrink resistance, colour fastness, washability, etc. Smart and hard wearing, ideal for summer use on or off the cycle. **Lovat. Sizes: 9 or 10 ... 47/6. 32"-36" ... 50/11**

GENTS' WORTHY SHORTS

TERYLENE/WORSTED

A beautiful short in tasteful Grey, 55% Terylene 45% wool mixture of good weight. Cut on close 'Continental' lines, fits snugly at waist with zip type adjusters, double button and extended band. Two side pockets, two inset rear with neat buttoned flaps. Shorter legs, discreetly cut, allow full movement without gaping. Dirt resistant and non-creasing, this material is so hard-wearing no double patch is fitted. As smart off the cycle as when riding, ideal for Continental holidays.

Grey only. Sizes 32"-40" ... 61/11
 Sizes 9 or 10 (28" or 30") ... 57/8



70% ACRILAN

In modern all-zip style. Zip fly, two zipped rear pockets, zip type adjusters to the extended waistband which bears a foam rubber 'shirt-retainer'. These shorts are not cut quite as closely as the Terylene but have slightly shorter legs than standard. Of special interest to Continental tourists is one of the two hip pockets, which is made large enough to accommodate a passport or full sized wallet. In a pleasant Bronze/Lovat shade, these shorts are really smart on or off the cycle, no double seat is necessary. Will give comfort and hard wear. Sizes 32", 34", 36", 38" or 40". Bronze/Lovat ... 60/11
 Smaller sizes 9 or 10 (28" or 30") ... 56/9

LIGHT TWEED

In a modern 'broken' design of Black and White with tiny flecks of colour to give the tweed 'life' these shorts are different! A Silicone proofing makes them showerproof, stain and shrink resistant, whilst increasing the strength and retaining the full softness of a good tweed. Cut as the Acrilan, with button fly and waist adjustment, two side and two flapped rear pockets. An adequate double seat and sponge 'grip' waistband with double hook complete a very smart and practical short. Sizes 28"-40" Bluish Grey Mixture. Sizes 32"-40" ... 48/-
 Smaller sizes 9 or 10 (28" or 30") ... 44/9

WHIPCORD Grey or Black

The original whipcord short that proved so tough and hard-wearing that it became the standard wear for all racing and hard-riding club-folk. Cut on comfortable lines with two side and two flapped hip pockets. A double seat correctly placed and an extended waistband with adjuster. Sizes 32"-40" (even only) ... 44/7
9 or 10 (28" or 30") ... 41/7



POPULAR

A lightweight short in Strong **Black Twill** material that is surprisingly hard wearing. Cool and comfortably cut. Sizes 32"-34" ... 21/6. 9 or 10 (28" or 30") ... 20/-

LADIES' WORTHY SHORTS

TERYLENE/WORSTED

In the same medium shade material as the Gents for a smart 'twosome' these shorts have a close fitting cut. The inside of the short legs are shaped in and the outside 'nicked' so that there is adequate room when riding without any 'pull' on the thigh. Two slanted side pockets are provided and the waist is closed by a zip at the side. The double buttoned waist-band is fitted with a 'Shirt-grip' band. No double patch is needed. **Grey only. Even** Sizes 26"-32" ... 61/11. Size 24" ... 57/8

70% ACRILAN. Bronze Lovat

Same basic design as the above, cut slightly looser with legs a little longer. Not so crease resistant as Terylene but much softer. Size 24" only ... 56/9
Even sizes 26"-32" ... 60/11

TWEED—Silicone Proofed

Cut as Acrilan in same tweed as the Gents. Nice **Bluish Grey Tweed** mixture. Size 24" only ... 44/9
Even sizes 26"-32" ... 48/-

WHIPCORD Grey or Black

Cut far more generously. Longer legs and double seat. Size 24" ... 41/7
Sizes from 26" to 32" ... 44/7



WORTHY SHOES

For more than thirty years shoes bearing this name have been used by keen discerning riders throughout Britain and more recently in many other parts of the world. With this long experience of cyclists requirements in footwear we are proud to offer our latest range; combining 'know how' in design with recent advances in materials and manufacturing techniques. All the uppers are fashioned from full chrome leather and the lower prices of some styles are due mainly to production costs rather than a reduction of material quality.

All Worthy shoes available in full and half sizes.



**GRAN
SPORT**
Sizes 3-12

An all-black shoe in the popular 'soft' style without pedal patches or toe stiffening. The upper is reinforced over the instep by four diagonal rows of stitching on each side, which prevent spread and retain a close fit. Some stiffening of the heel back is provided to prevent slipping and ensure comfortable riding even after considerable service. A light 'V' heel is fitted to the strong leather sole 44/3

RECORD
Sizes 2-12



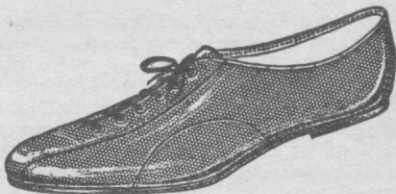
A stout all round clubman's shoe with a tough though supple black leather upper tastefully trimmed with a subdued red trimming. Both heel and toe are reinforced and a pedal patch is provided. The one-piece sole is cut from selected leather and carries a light full heel. Long close lacing through Continental style triangular eyelets enhances the appearance of a good class shoe ... 43/3



RENOWN
 Sizes 3-12

A well shaped and proportioned shoe with the back curved in for good 'heel-grip' in the Continental fashion. The black upper is offset by neat white stitching and eye-lets. A tough black Viklite sole carries a full light heel of the same material. Identified by the name 'Silver-stamped' on to the slightly extended tongue ... 39/3

**GRAND
 TOUR**
 Sizes 5-12



This really well shaped full chrome black upper is neatly finished at the ankle with tan trimming. Laced well down the slender toe strapping and fitted with a large curved pedal patch. Cork lined, the special 'resin' sole is deeply channeled and stitched with a hot waxed thread process. Real value at only ... 33/11

ROUGHSTUFF
 Sizes 5-12



A walking (or working) shoe with narrow sewn welt that will fit into a pedal and toe clip. Very dark tan full chrome upper finished in Scotch grain. The tongue is webbed so that wet cannot penetrate lace holes or front opening. Tough leather sole, Viklite capped heel 59/9

CRODONI RACING SHOES

Crodoni racing shoes introduced last year have proved so popular that the range has been increased still further. Now offered, at a very reasonable price, is a genuine Italian made racing shoe . . . the Corsa (see page 22).

**"VELOCE"
PURSUIT
SHOE**



With its sweeping lines and slender waist, perforated upper and pliable sole, supported at the instep by a light steel support, will appeal to all riders who are seeking the lightest and coolest of shoes. The high front laces to an inch of the toe and the ankle is neatly trimmed. Designed as a purely racing shoe (not suitable for Club 'football' or Cyclo Cross), the light sole carries no heel. Hand made in metric sizes 38 m. to 48 m. State English size required and nearest $\frac{1}{2}$ size (e.g. 8", 8 $\frac{1}{2}$ " equals 43 m.)

... .. 61/6



**"GIRO"
ROAD
SHOE**

A road shoe with the latest ideas of comfort. Well spaced larger perforations in the upper are combined in the Continental fashion with eight holes in the sole. These holes serve a double purpose; in hot weather they keep the feet ideally cool, whilst in rain, when normal shoes became 'water-logged' they enable excess water to run out and avoid the discomfort of waterfilled shoes. The sturdy sole of the 'Giro' with its four-point steel support eliminates foot fatigue over the longer distances. Sizes as 'Veloce' 73/-

Both of these models have further detail refinements. Special absorbent Nylon covered sponge inner-soles and small toe pads are fitted for extra comfort. The 'Crodoni' mark is stamped in Gold on the soft tongue which is anchored into position on the inside of each shoe. Small lace eyelet holes are reinforced by fibreglass tape and the range is made in $\frac{1}{2}$ sizes for the convenience of British riders. Range is from 5 to 12 in half sizes.



"STRADA"
ROAD
SHOE

Beautifully shaped from a full chrome calf side leather, the mouth is cut very low with a neatly rolled edging. High lacing at the front and a well curved heel line ensure riding comfort. A horseshoe heel is fitted to the sole of French Viklite which is so very supple, hardwearing and consistent in quality, that a thinner sole can be used. Reinforced at the instep by a Nylon shank located by three rivets. A real 'class' shoe for racing or general club-riding ... 66/9

"KANGAROO"
ROAD
PATH



Similar in general design to the Strada this very light shoe has the upper made from genuine Kangaroo leather which has an extremely high strength to weight ratio. Fibreglass tape strapping at the heel and instep, as used in the best quality running shoes, further strengthens this remarkable 'feather soft' upper. The first quality full length leather sole is reinforced by a Nylon shank with three point fixing. No heel is fitted, but these are available separately if required ... 77/-

HORSESHOE HEELS. Easily fitted with adhesive by your repairer to the Kangaroo or Veloce flat soles

1/6

CRODONI RACING SHOES



"CORSA"

CLUB
SHOE

Introduced this year is a light 'Club' shoe at a price that will be popular with everybody. Handbuilt by some of the finest craftsmen in Italy, the 'Corsa' has the obvious 'class' of all Crodoni products. Shaped on the same last as the 'Veloce' this all-black shoe has a full chrome upper and full length leather sole fitted with a light heel. A close rolled edge and tiny lace holes give a really neat finish. No stiffener is fitted under the instep as on the other models, so a shoeplate should be used. In metric sizes, state your normal English size when ordering **47/11**

REG HARRIS SHOES

ROAD. A black shoe with one piece sole, stiffened at the instep. The lace strapping runs parallel down to the toe which is cut square. Sizes 3-11½" **52/6**

SUMMER SPRINT (Illust.)

Same shape as the above, with a wide cut and square toe, but drilled upper for summer coolness. Rolled edge, light heel. Sizes 5-11½" **52/6**

WINTER SPRINT

Exactly as illustration but without any holes in the soft toe upper. Sizes 5-11½" **52/6**

Small sizes. Any of above shoes sizes under 6 ... **50/9**

Larger sizes. 12 and above are available at extra cost.

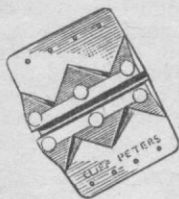
FALLOWFIELD. Fitted with 'breather' eyelets at the instep and wide strap patches on either side to give support to the foot. Sizes 5-12 **42/9**

EILEEN SHERIDAN. A smart but sturdy ladies' shoe. In soft black calf. Sizes 2-7 only **49/-**



SHOE PLATES AND LACES

ARCHAMBAUD (Illustrated). Alloy blocks, which minimise pedal plate wear, are steel rivetted to a steel plate to form a deep slot. The steel plate will not crack and spreads the thrust over a large area ... 3/9



ARCHAMBAUD PROFESSIONAL. As model illustrated but with an extended plate that is curved to follow the shoe ... 6/-

ARCHAMBAUD LONG. As above but with a long plate reaching the heel of the shoe ... 6/6

CAMPIONATO. A bronze plate with deep slot ... 3/6

PETERS LEATHER with deep slotted alloy strip set in leather, easy to fit, silent underfoot 3/-

PETERS DURAL. Light and strong, will stand up to bending and blend into sole of shoe ... 1/11

PETERS CYCLO-CROSS. Alloy plates with two long spikes fitted behind the deep pedal slot. Spikes have spanner flats for removing after the event. ... 8/9

T.A. Extruded alloy plate with deep pedal slot for good grip. Supplied with tacks and fitted with a slot which allows simple location when fixing ... 5/-

LEWIS. Alloy plate extruded with deep pedal slot and a groove for the fixing tacks to seat in ... 1/11

KEN RUSSELL. A hard rubber plate with single slot, quiet underfoot and does not wear pedal plates ... 2/-

SHOE LACES. Strong braided 'round' laces long enough for cycling shoes. 30" in Black only pr. 4d.

EMBROICATION, etc.

CURACHO EMBROICATION. A spirit type that quickly penetrates. In cold weather use 'Thermal' in small size.

Small size. Thermal or Standard ... 2/6

Large economy size. Standard only ... 4/-

CURACHO MASSAGE CREAM in 2 oz. jars ... 2/6

BATH SALTS. Aids relaxation. Large tin ... 2/6

CRODONI STOCKINGS



Recently introduced from 'Crodoni' are smart hose in Wool and Terylene. In striking colour combinations the very popular continental design, of Scandinavian motifs and horizontal bars, is shown to full advantage. So much pattern is woven into the hose that the only obvious base colour shows at the elasticated top. Choose from:—

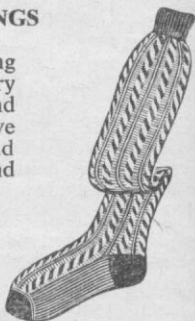
**Black base with Red and Stone.
Scarlet with Black and Lt. Blue.
Maroon with Yellow and Saxe.
Navy with Royal Blue and White.**
 Sizes 10-11½ 12/11

WORTHY STOCKINGS

DANSK

A boldly coloured 'stretch' stocking in crepe Nylon/Terylene which is very light to wear, easy to launder and does not fade. Knitted to a distinctive Danish pattern, of vertical ribs and wide cable stitch giving a close fit and unusually smart appearance.

**Black with White or
Black with Turquoise.
Red with Black contrast.
Navy with Saxe Blue.**
 One size only 11/11



NEW QUADRILLE

Closely knitted from fine gauge 100% shrink resisting wool, these hand finished hose are warm and comfortable. Very large diamonds in clear cut solid colours are contrasted for maximum impact. The plain tops are elasticated to fit just below the knee. In two standard and two 'different' colour combinations.
 Sizes 9 to 11½.

**Saxe Blue with Bright Red and Navy.
Black with White and Grey contrast.
Lime Yellow with Red and Black or
Gold with Black and Brown** 11/11

WORTHY STOCKINGS

PLAIN WOOL

Ideal early season training socks as they will not over stretch light racing shoes. Close fine ribbed all wool hose, with elasticated tops, in Plain shades of **Saxe Blue, Sedge Green, Fawn, Wine or Black.** Sizes 10"-11½" 9/6

MODERN DIAMOND

Knitted from muted shades of fine wool, this close fitting stocking is of good length and the wide elasticated band reaches just below the knee. The leg is divided into small diamonds, a line of which, running up each side are filled with another colour and edged in contrast. Each stocking has a pleasing combination of four colours chosen to suit the more conservative taste.

Green with Dk. Green, Dk. Blue with Lt. Blue, Grey with Black.
10-11½ in half sizes ... 7/11



MEDICI NYLON

In a heavyweight 'Stretch' Nylon knitted to a distinctive rib pattern similar to the Richelieu. Light to wear and easy to wash they are close fitting and flattering to the leg. Plain elasticated tops. One size only. **White** ... 7/11

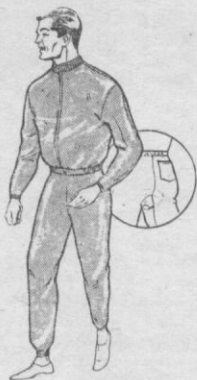


RICHELIEU COTTON

The original knitted cotton stocking introduced to England in the Continental style. Knitted from an extremely tough hard-wearing natural thread these have proved almost indestructible. Fancy ribbed to the toe with elasticated tops and Nylon splicing, they have been widely copied and you are advised to

check the 'Worthy' trade mark on the foot for the genuine article. **White only.** Sizes 9"-11½" ... 6/9

MAESTRO TRACK SUITS



Only a few years ago we first introduced a specially designed track suit for the cyclist. These proved so practical that we no longer list any 'baggy' suits but offer two very attractive models made purely for the bike-rider!

Both in smart silky faced material with warm fleecy lining. The tops are cut on close lines with full length open-ended zips for easy removal. The legs fit really close with a specially stitched double seat for riding comfort.

The NEW MAESTRO

The top of this suit has a high fitting ribbed wool collar and is neatly finished with similar self-

coloured ribbing at waist and cuffs. The legs have a rear patch pocket, wool ribbing at the ankles and elasticated waist. In three sizes and three colours. **Royal, Black, Crimson** 72/6

MAESTRO De Luxe

The 'De Luxe' top has cuffs waist band and a neatly inset collar in bold contrast wool ribbing, plus a zipped pocket set at an angle for easy use on the cycle. The legs are fitted with two deep side pockets and the ankles of self-coloured wool are closed by 6" zips to avoid stretching at this point. Three colours:

Scarlet with blue/white contrast.
Black or Royal with red/white.
Three sizes: S, M, L ... 82/6



SWEATERS AND TRAINING LEGS

LE PARIS SWEATER



Made from 100% pure wool. The fine gauge, close ribbed, shape retaining stitch ensures a smart fit always. The flat, inset 'horse-shoe', collar allows a jacket to be worn and carries neat bands matched at wrist and waist. A full length open-ended zip, longer than usual length back and sleeves are ideal on the cycle. The colour combinations will be admired by non-cyclists too!

Six colours with two different width bands edged by third colour.

Old Gold with White and Black.

Royal with Stone and Black.

Lovat with Canary and Bottle.

Saxe with Crimson and Lt. Navy.

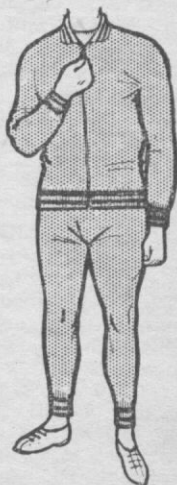
Black with White and Royal.

Crimson with Canary, Lt. Navy.

Moss Green with Canary, Lovat.

Sizes 36"-40" ... 85/3

Larger sizes 42", 44" ... 91/3



LE PARIS LEGS

Knit as sweater, in the true Continental style. The soft wool is reinforced by circular stitched chamois seat for comfort and wear. Zips at the ankle allow easy removal without stretching. Ideal for all training, waiting about or warming-up. Contrast bands at the ankle match the sweater of same colour. **Royal Blue, Moss Green, Black or Crimson.**

Sizes Medium and Large 75/3

TRACK MITTS

CRODONI

The best track mitt to be produced by this famous firm who make for the top flight Italian professional riders. Made of extremely supple reversed chamois kid, the stepped fingers are neatly finished at the edges for comfort and the reinforcement patch is shaped to the

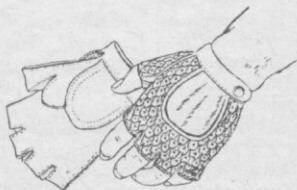
palm. An unusual crocheted back is of very open pattern for maximum coolness but, made in strong thread, maintains its shape and, assisted by the adjustable wrist strap, is always a good fit. The thumb back is similar in design the finest mitts ever made by Crodoni of Milan 30/6

TAN ITALIA. In rich tan coloured leather, soft but hard-wearing. The cross-stitched palm reinforcement is carried round behind the index finger to take brake lever wear. Back of mitt is hand crocheted to an open design for a cool, close, shape retaining fit. Strap and press stud closing at wrist. Sizes S, M and L ... 29/9

WHITE ITALIA. In soft White leather, institched for comfort and with smartly stitched palm reinforcing. A full width Italian hand-crocheted back with deep squared opening ensures a cool close fit. The cuff, extending barely to the wrist, is closed by press stud fixing. Three sizes: Small, Medium and Large ... 23/3

SPANISH CHAMOIS

An attractive mitt from Spain with heavy hand-crocheted back, open almost to the knuckles and thumb back to match. Very well shaped, with deep thumb gusset, sized half fingers and low wrist band fastened by press stud. The palm is lightly reinforced. Very good value in Natural Chamois leather. All sizes 19/11



SPANISH TAN LEATHER

Comfortably made with well designed gusset at the thumb and adequate palm reinforcement. Maximum freedom is given by the low cut back and press stud fastening wrist band. The really soft tan leather, peccary marked, gives good non-slip grip, while perforations on the back of sized half fingers and thumb aid ventilation. **S,M,L and Ex Large 19/11**



SPANISH NET BACK

Neatly institched in Nat. Chamois to same pattern as above. The whole of the back and thumb inset are of strong Nylon net. **Very good value. S,M,L or Ex L 14/11**



N.B. *Track mitts should be a close fit—remove by pulling off, inside out, from the wrist. Do not leave wet but allow to dry slowly after use.*

CREAM HIDE

A really hard-wearing track mitt in tough Cream Hide that will stand rigorous use on track or road. Reinforced by a full width patch that extends round the back of the index finger, strong enough to be used as a brake on the tyre. A butterfly patch under the thumb, well stepped half fingers and perforated back complete a most practical mitt. **Three sizes S,M or L 21/3**



BLACK and WHITE

Soft pliable white leather with black palm reinforcement, piping and stitching makes a smart, light mitt. Well stepped half fingers and a circle of perforations on the back make for a comfortable fit. **S,M or L 17/6**

MORDANT

Unbeatable value in soft fawn leather trimmed with brown. Reinforced at palm and inside of thumb. Perforated backs. **Three sizes. S,M or L ... 10/3**

SUN GLASSES

NUPROSAL (illus.)

Deep modern shaped glasses that will protect your eyes from sun glare, flies and grit. Genuine Crookes lenses with



Grey/Green tint are set in a curved engraved frame with strengthening bar across the bridge. Nose pads and ear pieces are plastic covered for comfort ... 10/6

CLIP-ON. Similar lenses, but smaller and rounder, to fit over spectacles. Strongly held by sprung bridge 7/8

BUSH GLASSES. Extra large 'rounder' Crookes lenses set in a gilt frame with plastic covered reinforcing bar, nose and ear rests ... 5/1

ITALIA DE LUXE. Almost identical to the Nuprosal illustrated but with slightly flatter lens shape ... 10/11

ITALIA. Deep lens shape as illustrated above, with an engraved frame and plastic reinforced bar ... 6/11

ONE PIECE. With strong pliable black plastic frame. The deep plastic shield is tinted brown and extends round the side of the face giving complete protection. Safe and practical 7/6



SIDE VISOR. Made from a pliable black plastic with grey lens, these glasses have collapsible vented side pieces for maximum protection. Light to wear 10/11

GOGGLES



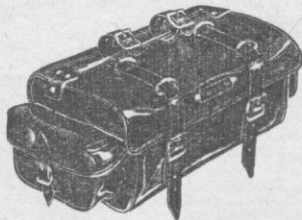
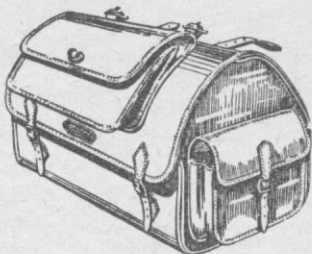
BINDA. Light alloy, ventilated, frames with pneumatic rubber padding. Clear or tinted 5/3

DE LUXE. Pattern are similar but edged in soft flat white rubber for greater comfort ... 5/6

ACCESSORIES and SUNDRIES

"WORTHY" BAGS

EVERYMAN. Made from special composition, looks like leather, wears like leather. Keeps shape. Two side pockets, strap fastening. Map pocket on top, turn-buckle fastening. Size: $12\frac{1}{2}"$ x $7\frac{1}{2}"$ x 8" base, tapering to 5" width 52/6



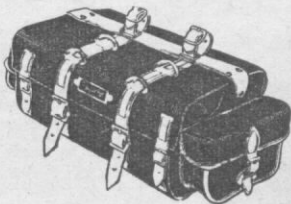
DEVONIA SADDLE BAG

Introduced in tough 'Arlinghide' to match the popular pannier set. Strongly reinforced at all corners, both bag and side pockets have deep 'box' flaps to keep out the wet. Long straps give support from the saddle and double rings allow cape, etc., to be strapped on top. A flat

pocket under the flap keeps maps clean and handy. Good capacity. Size: $12\frac{1}{2}"$ x $7\frac{1}{2}"$ base, 7" deep with short taper at top ... 34/-

HIGHLANDER SADDLE BAG

In heavy duty **Black Duck** as panniers. A large bag with heavy chrome leather reinforcing at back, underneath and on all corners. Top flap and side pockets are 'boxed' against weather. Useful map pocket fitted under top flap. Two long straps (with cape rings) support the weight from the saddle strapping and to stop 'sagging', two small straps hold the outside corners of flap in position. Size $16" \times 7\frac{1}{2}"$, 7" deep ... 55/6



CAPE ROLL

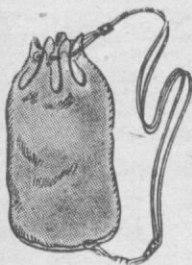
In tough 'Arlinghide' with leather reinforcements. Long straps allow vertical or horizontal fitting behind the saddle. The roll remains attached to the cycle when cape is removed. A tool pocket, 2½" x 1" and 6" deep will hold a Mafac tool kit or puncture outfit and spanners 7/6



TUBULAR BAG

Made from waterproof material and designed to fit in a vertical position behind the saddle. Its long narrow shape will not rub your legs and has a deep flap along entire length (13") so that two tubulars or a cape and one tub. can be easily inserted. A pocket inside will hold a tool set. Fixed by one long strap round roll (through saddle wires) and a short strap round seat pin 7/9

SHOULDER BAGS



SACCO (Illustrated)

Continental type kit bag made in heavy waterproof material with a strong cord fitted through brass eyelets and tags to a spring clip which hooks onto a loop at the base of bag. Neck of bag automatically 'draws-to' when carried.

Handy size. In a choice of plain **Red, blue or green** 9/11

Large size. In plain colours only. **Red, blue or green** 12/11

MUSETTES

Campagnolo. Made from strong rubber-lined material with a wide webbing shoulder strap and eyelets at sides for a waist string if required. Size: 13" x 10" with a deep flap, fastened by press studs. Various colours with Campagnolo trade mark in contrast 6/8

Claud Butler. As above but with the C.B. signature on front 6/8

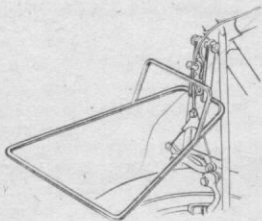
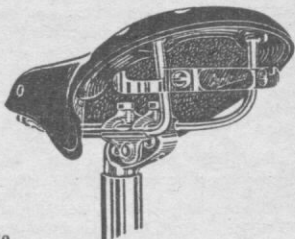
Plain colours. In light, proofed cloth, same size as others. Various shades ... 5/-



BAG SUPPORTS

CAMPIONE

A quick release fitting that allows a bag to be hooked-on, or off without undoing straps. Designed primarily for use with saddles not having bag loops. Two types; the straight 'Nitor' or curved 'Competition' shown. Consisting of chrome plated strips clamped either side of the saddle wires with aerotite nuts. The curve of the 'hook' leaves just enough room under the frame for the strap to pass. Badged 'Campione' either type 5/9



CLAUD BUTLER

A rigid bag support designed to overcome the problems of centre-pull brakes. Made of strong rod the platform is brazed into two plates leaving a gap for the brake and its q/release mechanism to operate. A strengthening bar also holds the bag clear from the brake. Supplied with extra length knurled seat bolt from which the support hangs. **Bright plated** 7/6

VILOSPORT 'Leech' saddle bag attachment. Designed to clamp to the saddle frame wires providing a quick release fitting for saddles not provided with bag slots. Correct type must be used.

No. 1 for Unica road saddle taking normal saddle clip 19/9

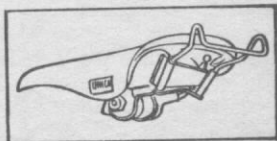
No. 2 for Unica road saddle with a flat undercarriage 19/9

No. 10 for Unica track saddle with normal wire frame 19/9

Simpler fittings are supplied for use with Brooks Competition.

No. 3 for 'Competition' Std. model with normal frame 12/9

No. 4 for Campagnolo/Competition saddle with narrow frame 12/9

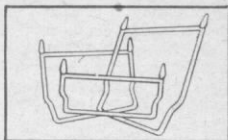


BROOKS. Rigid Chrome support. Fitted by wing nut to stays 6/6
In the popular Silver finish support as above 4/6

HIGH LIFT BAG SUPPORTS

VILOSPORT 'Hi-lift'

Available in three sizes to drop into any 'Leech' bag attachment. Will lift bag away from mudguard by 1", 2" or 3". When bag is removed from cycle the 'Hi-lift' makes a useful carrying handle. All types—Mini 1", Minor 2" or Major 3" 4/11



KARRIMOR. Standard Uplift. Quick release attachment that raises the bag above saddle slots well clear of mudguard ... 5/6

Tourist Uplift. Similar to Standard but with a support for the underneath of the bag. Chrome plated finish ... 8/9

PANNIER BAGS

All pannier bags listed below are supplied with plastic 'liners'.



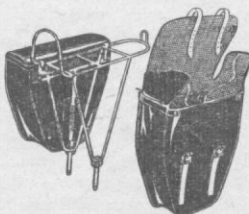
HIGHLANDER

In heavy duty Black Duck material. Long straps and deep inner flaps give extra inches of space. Basic size: 12" x 11" x 5". Deep hooded pockets at rear will take items 'wanted on voyage'. Carrying handle and Q/Release aids removal ... 73/3

DEVONIA Q/R PANNIER BAGS

Rear Bags. In tough, good looking 'Arlinghide', with piped edges and leather reinforcements. Size: 11½" x 10½" x 4" with a large pocket at rear of each bag. Deep flaps with long straps. Fitted with a 'Quill' quick release ... 53/9

Front Bags. 'Arlinghide'. To match rest of set, ample bags size: 11½" x 10½" tapering to 5" x 4" wide. Leather reinforced and fitted with Q/Release. Webbed inside flaps have draw tapes ... 48/9

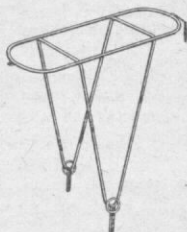
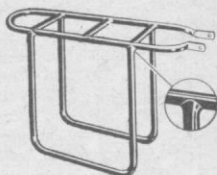


HANDIBAGS. In strong 5 thou' black plastic welded to fit rear panniers. Keeps contents dry in the heaviest storm ... pair 3/6

PANNIER BAG CARRIERS

QUILL

Light but strongly made from best quality **seamless tubing**. The top platform 16" x 5" now has three cross supports. Enamelled jet black. Adjustable plated clips to fit to seat stays are supplied. There are no sharp corners on a 'Quill' to damage bags ... 19/9



CLAUD BUTLER

Strong triangular support from platform to mudguard eyebolt on drop-out. Top support from brake pivot bolt. Lower ring accepts quick release fitting or strap. Finish bright silver ... 14/6

CLAUD BUTLER De Luxe

Similar to the Standard model illustrated but with a more elaborate top platform. Strengthened by an extra cross member the platform curves up to give protection to the popular centre pull brakes and

a lamp bracket (serves as a stop or strap loop) is fitted at the back. Bright silver finish. Smart and practical ... 17/6

CLAUD BUTLER De Luxe FRONT CARRIER

As shown with bags opposite. Platform is large enough to take all types of bags and quick release fittings. Guard for centre pull brakes, strut to brake fixing bolt. Lamp bracket at front. Bright Silver 17/6

CONTINENTAL REAR.

With sturdy triangular sides extending beyond a 9" x 5" well strutted platform. Guard to protect brake. Finished bright silver 12/6

LIGHTWEIGHT REAR.

Lighter gauge (bright nickel steel) support with large 'square' 10 1/2" x 6" platform. Lateral members curve up to protect brake. Silver 13/6

QUICK RELEASE FITTINGS. Sprung frames with strong hooks for rivetting to back of panniers. See opposite. Positive grip. Pair 7/6

BELLS

LA CLAIRETTE. Spring-ring bell. Polished alloy ... 2/1
Anodised, red, blue, gold or green ... 2/3
VICTREE. Super 'Sonnice', coil spring external striker. Polished or Anodised colours, blue, red and gold, all at ... 1/11

BOTTLES



CAMPAGNOLO (As illustrated)

Selected by Signor Campagnolo as a worthy bottle to be associated with his famous accessories. In White semi-translucent polythene for either hot or cold liquids. It is odourless and will stand up to very hard use. The 'double-seal' top with extended centre and overlap grips the bottle securely. Cap has lip which makes it easy to open and close whilst riding, and this cap is attached to the bottle so that it cannot be dropped. With Campagnolo Trade Mark Badge in Blue 4/3

ALLEZ! In white, red, green or blue Polythene with corrugated sides for easy handling. It is ideal for 'handing-up' as it will stand a lot of knocking about and does not dent ... 1/9

HIP FLASK. In strong light alloy to slip into racing jersey, flattened sides, useful for that 'special' drink ... 3/-

ALLEZ! Spare Corks with serrated alloy cap for positive grip 9d.

DRINKING TUBES. In strong, easily cleaned Polythene 4d.

BOTTLE CAGES

CAMPIONE CAGE (Illustrated)

Heavy gauge chromium plated universal fitting single cage. Can be fitted to either H/bar or D/tube by neat clips supplied. Sprung to allow easy bottle removal, fitted with smart two-colour badge ... 6/11

ALLEZ! WIRE. Lighter gauge, simple effective design with bottle guide. C/Plated. Single Handlebar or down tube ... 4/6

Double Handlebar fitting ... 7/6

T.A. Single Handlebar fitting with a solid bracket clamped to the bars. Heavy gauge wire. Plated ... 13/-

Down Tube model has a large, well shaped, guide for easy bottle replacement ... 13/-

PETERS UNIQUE (Illustrated)

Cleverly produced from only one piece of heavy gauge wire, supplying sufficient spring to grip bottle firmly, there are no joints liable to breakage. Chrome plated.

Down tube fitting ... 4/6

Handlebar Single ... 4/9



BRACKET FITTINGS



CAMPAGNOLO Cotterless

For alloy cotterless chainset, hard chrome bearings. Cups are finished in **satin chrome** and are not interchangeable with Standard cotted type.

Please state type of set required:—

Double standard length for original cranks, marked 68 SL (or S) 120.
Double standard length for new flat section cranks, marked 68 SS 120.
Single standard length for Path set, marked 68 P 120.
Single shorter than standard by 2.5mm. for $1\frac{1}{4}$ " chain line. 68 P 110.
Continental Sizes to suit French or Italian frame sets are available with right hand thread cups 35 x 1 and 36 x 24. Send set as pattern.
All complete sets with axle, cups, lockring, fixing bolts and washers 46/9

CAMPAGNOLO Cotted. For use with any cotted chainset. Usual high finish with **polished chrome** cups. Complete set: ROAD for double chainset PATH for single chainset 44/9

Spare parts—state for which set required:

Cotterless axle only. State type markings (less fixing bolts) ...	21/-
Cotted axle, ROAD for double chainset, PATH for single set	21/-
Lock ring for cotted or cotterless sets. Polished chrome	4/6
Fixed cup, left or right thread. Polished or satin chrome ...	11/-
Adjustable cup, right hand thread. Polished or satin chrome	8/8
Cotterless axle clamping bolt and washer, right hand thread, each	2/6

CHATER-LEA $\frac{5}{16}$ " balls. Axle No. 1007 for single ...	5/6
Axle No. 1240/1 for double (No. 1240 'between' length) ...	6/-
$\frac{5}{16}$ " Cups. No. 1349 right, No. 1350 fixed ... each	4/-
Lock Ring. No. 380	2/4
CHATER-LEA $\frac{1}{4}$ " balls. Axle No. 1615/1 for double ...	6/-
$\frac{1}{4}$ " Cups. No. 1617 right, No. 1617 fixed ... each	3/6
Lock Ring. No. 1618	2/-

BAYLISS WILEY. The production of bottom bracket fittings by this famous firm has been discontinued. The following list therefore applies—while the considerable stocks held last.

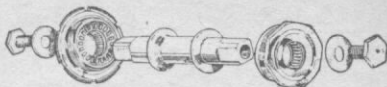
B.W. "Featherweight" Continental cups and L/ring ...	7/2
B.W. Hollow Axles No. 15R standard, No. 23R $1\frac{1}{4}$ " chainline, No. 14R suitable for double chainsets ...	7/-
B.W. Solid Axles. Nos. 15 and 23 ...	3/2
Fixed cups, No. 7, with flats for spanner ...	1/4
Adjusting cups, No. 1, with peg holes for pin spanner ...	1/3
Lock rings, chrome plated, as all above ...	10d.

BRACKET FITTINGS

STRONGLIGHT

T 160

"NEEDLE" BRACKET



Utilising thin roller 'needle' bearings which are particularly suited to carrying heavy loads at comparatively slow revolutions. For 49D and 57 Cotterless sets. T160/114 single, T160/120 double 105/- T260 for Cottered sets. T260/127 single, T260/132 for double 87/6

No. 97. Cotterless set for 49D or 57 chainsets (standard bearings) type 97/32C axle for single, 97/32RN double	42/6
No. 97/TRI Cotterless set for triple rings	47/3
No. 34. Cottered set. 127mm. axle for single set, 132mm. double	19/3
T.A. Cotterless splined axle No. 314 Single, No. 344 Double	38/-
Set of left and right cups with lock ring	37/-
Fixed cup No. W711	15/-	Adjusting cup W721	...	14/3
Locking Ring W730	7/9	Set of axle, bolts/washers	...	8/-

T.D. CROSS

Standard bottom bracket fittings in bright chrome for $\frac{1}{4}$ " balls.

No. C16/2 axle, $1\frac{1}{2}$ " chain line without gear case clearance, suitable for use with a single chainset ... 2/11

No. C16/4 axle, $1\frac{1}{2}$ " chain line with GCC, suitable for wide fitting double chainset or any other gear case clearance crank ... 2/11

No. C16/9 axle, $1\frac{1}{4}$ " chain line without GCC, suitable for close fitting double chainset (e.g. Williams), or single chainset if extra clearance is required ... 2/11

Standard cups and lock ring ... set 3/4

No. C11 Adjusting cup with left thread, spanner flats ... 1/3

No. C13 Fixed cup with peg spanner holes ... 1/4

No. C15 Lock ring ... 9d.

**Full range of cables and spares available
for all listed makes of brakes.**

BRAKE CABLE CLIPS, Etc.

CAMPAGNOLO No. 649. Engraved. Chrome plated 1" only. Set of 3 ... 3/6

G.B. '66'. Engraved. Chrome plated 1" only. Set of 3 ... 2/6

TERRY. Chrome, self-locking, 1" or $1\frac{1}{4}$ ". Set of 3 ... 6d.

No. 2 FLUTED OUTER CASE. Suitable for all modern brakes. Black, Red, Powder Blue, Royal Blue, White, Silver, Yellow & Green Per Foot 4d.

UNIVERSAL BRAKES

CENTRE PULL Mod. 61

The Universal is recognised as the best brake to be produced in Italy and the most recent model, the 61, will certainly maintain their reputation. Operating on the centre pull, wire control system, two neat alloy arms are pivoted from either end of a strong anchor plate

clamped to the forks. Coil springs mounted on the pivot bosses ensure an instant release but allow the blocks to 'follow' an untrue rim. The

'straddle' wire may be slipped from its sockets to release tension and allow rapid wheel removal. Soft studded blocks give positive grip in all weathers. Pair complete with levers

67/6



UNIVERSAL LEVERS

Powerful lever with Nylon bushed brass pivot. Hood and built-in cable adjuster covered with a translucent rubber grip. Each 12/6

SIDE PULL 'Sport' Q/Release

A really neat brake with slim stirrup fitting closely round the mudguard. Arms well extended to the cable clamps ensure maximum leverage is obtained. The patent quick release fits either side of the arm allowing more movement and less chance of dirt or corrosion making operation 'sticky'. Fitted with soft white brake blocks, ribbed for wet weather gripping. Hooded lever as above with white rubbers.

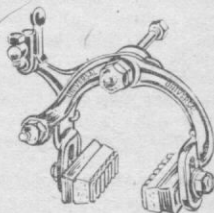
Tremendous value at only ... 32/6

LEVER HOODS. As shown on lever above in either soft brown translucent or white rubber ... pair 7/6

LEVER ADJUSTER RUBBER. Small black conical shaped pair 9d.

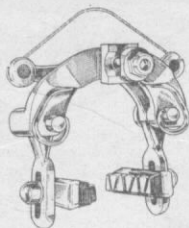
BRAKE BLOCKS. Soft rubber for alloy rims, ribbed into seven vertical pads to break up water on the rims ... pair 10d.

BLOCKS IN ALLOY SHOES. Complete with clamping bolts pr. 2/6



G.B. BRAKES

COUREUR '66' Centre-pull



This popular symmetric action brake is shown from the rear view to illustrate the new backplate, which is of stronger section than before, and fitted with two single coil springs operating independently on the stirrup arms. Enclosed Nylon bearings ensure that all working parts function smoothly and silently. Unusually rigid cable hangers at head and seat eliminate any springiness in the action. Supplied with:

- Superhood Rapide Levers** (illustrated) which have a Nylon quick release thumb slide housed between the lever and hood. The spring loaded slide returns automatically, when the brake is next applied, so there is no chance of poor braking after a wheel change 60/-
- With Superhood Plus lever (non Q/R)** 57/-
- With New Superhood lever (no adj.)** 55/6



SYNCHRON

This brake represents a new approach to the design problems of efficient calipers. The side anchored cable is the only link with conventional side-pull practice, every feature of the action being symmetric. Two separate stirrup pivots are mounted on a common backplate, the shoes being held 'off' by a single spring sliding on Nylon rollers when in action. Latest models have a cranked arm for extra cable movement. Supplied with:

- New Quick Release Continental levers** as illustrated opposite, operates on the 'Rapide' system with neat stud ... 49/6
- With Superhood Rapide levers** ... 49/6
- With Arret finger grooved levers** ... 45/6



COUREUR PLUS Side Pull

An efficient alloy side pull brake operating through Nylon bushes. Fitted with a neat quick release and studded 'wet weather' blocks.

- With New Superhood lever (no adjuster, fit hood No. 507)** 40/6
- With Superhood Plus lever with adjuster fitted in hood** ... 42/-
- With Superhood Plus lever Anodised Red or Blue** ... 45/-

G.B. BRAKES (Continued)



SPRITE (Illustrated). Described by the manufacturers as the junior of their range it provides a simple but effective brake, at low cost. The hooded lever is of fairly short reach and the stirrup is available in one depth only. Normally supplied with the lever described above as shown in the illustration. As an alternative for machines with flat bars, touring levers are available ... 34/-

SPORT MK 3

An efficient alloy brake of neat design operating on the side pull system. Rigid polished stirrups carry studded blocks in adjustable shoes. Supplied with the Arret lever which is shaped to give good leverage and finger grooved for non-slip grip. Available with two stirrup depths. 'A' standard or 'B' deep as required ... 38/-

BRAKE LEVERS

New Continental Quick Release (illustrated) has a release button against which hood normally rests. To release, the button is depressed and slides under hood. Automatically returning when brake is next used. ... each 12/6

Superhood Rapide as shown and described on page 40 with Nylon quick release incorporated ea. 12/6

Superhood Plus similar to the Rapide with finger tip cable adjuster but no Q/release each 10/6

New Superhood, a plain lever without quick release or cable adjuster. Same improved shape as the Continental with large cable socket each 9/6



Arret levers do not feature quick release or 'while you ride' cable adjustment but are a rigid, high leverage design with well placed milled finger-grip depressions ... Each 8/6

Sprite. A simplified version of the Arret without finger depressions or coloured pivot ... Each 7/6

No. 575 Touring type has a short block and semi-straight lever ideally suited to flat bars ... Each 8/-

No. 126 Sprite Touring for flat bars (barrel nipple) ... Each 7/6

G.B. HOODS AND SLEEVES in white rubber.

No. 503 Whole Hood for Superhood Plus or Rapide lever. Pair 4/6

No. 507 Half Hood with built in adjuster for Arret or Sprite levers, may be adapted for Rapide, New Superhood or Continental Pr. 5/6

No. 508 Half Hood for Superhood Plus or Rapide lever Pair 4/6

No. 509 Lever Sleeve. With moulded finger grips ... Pair 2/-

G.B. BLOCKS AND SHOES in studded 'Wetgrip' material.

Blocks and Shoes. Red or black, short or long with fixing nuts 2/2

Blocks only. Red or black, either length ... Pair 10d.

WEINMANN BRAKES AND ACCESSORIES

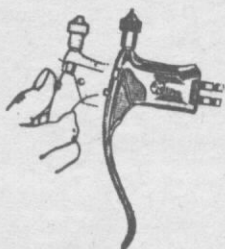
VAINQUEUR 999 (Illustrated)

A well finished centre-pull brake made in Switzerland to fine machining limits. Operation is by two arms working independently in cantilever action. The pivots, mounted on a carrying arm which bolts to the frame, are fitted with Nylon bearings for smooth transmission of braking power.
Model No. 610/750 has standard stirrups
No. 610/610 a shallow front stirrup.



Supplied with:—

- Lever No. 162 (Illustrated)** which has a quick release stop fitted between the hood and lever. Cable adjuster and rubber hoods 65/-
- With Lever No. 161** as illustrated but without the built-in cable adjuster or rubber hoods 57/6
- With Lever No. 144** hooded with rubbers but no adjuster or Q/R ... 61/6



SIDE-PULL BRAKES

No. 730/730 Standard stirrup model with well finished wide curving arms to give reliable braking via studded wet-grip blocks.

No. 500/730 for shallow front stirrup. No. 890/890 for deeper stirrup.

With No. 144 Hooded racing lever, Non Q/Release 38/-

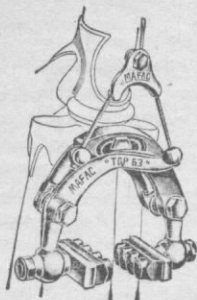
With No. 161 Hooded Q/Release lever (no adj. or rubbers) ... 41/9

With No. 162 Hooded Q/R lever, adjusters & rubbers (Illus.) ... 58/3

No. 730/810 Tourist Model with med. depth stirrups and special Short-reach lever No. 136. Non quick release 34/-

LEVERS. No. 162 Quick release and Nozzle adjuster	each	12/9
No. 161 Hooded Quick release without adjuster	each	9/-
No. 145 Hooded with built-in cable adjuster	each	11/3
No. 144 Hooded Racing without adjuster or quick release	each	7/6
No. 136 Touring with small hood and straight lever	each	5/6
Lever Hoods in white rubber, covers entire hood	pair	5/6
Lever Sleeves covers lever with first finger 'hook-grip'	pair	1/6
Blocks, Long or Short, red or grey, studded wet-grip	pair	10d.
Blocks and Shoes, complete with nuts and bolts	pair	2/3

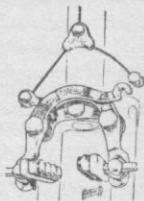
MAFAC BRAKES



TOP 63. The latest of a series of centre-pull brakes introduced by this famous French concern. Developed from last year's 'Tiger' this has the main carrying arm formed by two mouldings which are bolted together and to the frame via curved slots. One arm slides into the other allowing the stirrup to be 'opened' and supplies the vertical adjustment needed to align blocks with the rim. There is no up or down movement on the blocks themselves but the angle may be altered so the blocks meet the rim squarely. Complete with hooded levers, rubbers and adjusters 75/-

RACER

This model continues unchanged and was the first of the range to adapt the now popular cantilever action from a brazed-on brake to bolt-on types. The arms are independently sprung and are pivoted on bronze bushes fixed to a backplate which clamps to the cycle. Supplied with hooded levers but without rubbers or adjusters (see below) 59/9



DRIVER. A brazed-on model taking the place of the earlier Criterium. Actual operation is the same as the others but the pivots are in the form of pegs brazed onto the cycle frame. Extremely simple, the short forged arms, with brake block clamps as the Top 63, are very rigid and efficient. Supplied with bare cables and hooded levers less rubbers and adjusters ... 52/6

CRITERIUM TANDEM. A brazed-on model similar to the above but with double plate arms extended to give greater power to the longer blocks employed. Hooded levers less rubbers ... 61/6

LEVERS. Alloy hooded 'Professional' each 8/9

Rubber hood with adjuster, fits on the front of lever.
Red, White, Blue or Green ... pair 9/-

BRAKE BLOCKS Std. black, four stud pair 1/-

Tandem blocks, longer, five stud ... pair 1/4

Blocks in Shoes for Racer or Criterium pair 4/6

Blocks in Shoes for Tiger, Driver, Top 63 pair 8/4



CAMPAGNOLO CHAINSETS

Without doubt the finest chainset ever produced

ALLOY COTTERLESS

These superb cranks are machined to fine engineering limits from solid alloy forgings ensuring by their accuracy that the chainrings run perfectly true. Chemically polished to a lustrous 'satin' finish the latest pattern have a narrow 'flatter' section to cut down wind resistance and close down the 'tread' width. The rings, not pressed but machined from solid blanks, sit on square shoulders and are clamped to the five crank arms by screwed bushes locked with a small 5mm. Allen key and peg spanner. A four sided taper spline on the axle fits into the crank and is locked by means of a large headed bolt, giving an absolutely solid drive. Provided the axle and crank splines are fitted together clean and dry no further adjustments are necessary to maintain correct positioning or tightness.

Supplied complete with bottom bracket set, finished in satin chrome, and two pre-lubricated cages of $\frac{1}{4}$ " balls.

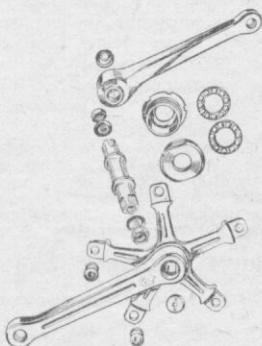
Double Set complete with bracket fittings (less the tool set). **Ring sizes 44-52T** (larger sizes extra, details listed opposite) ... **240/-**

Single sets. Designed as the double, but with shorter axle and less clearance between the right crank and arms which are suitable for single $\frac{3}{32}$ ", $\frac{1}{4}$ " or $\frac{3}{16}$ " inch pitch rings.

Single $\frac{3}{32}$ " set. **44-52T**
(larger sizes extra) **207/3**

Single $\frac{1}{4}$ " set. **46-52T**
(larger rings extra) **240/-**

Single 1" x $\frac{3}{16}$ " set. **23-26T** (larger sizes extra, see opposite) **240/-**



CRANKS. With bracket fittings (less tools). **Road** (double) or **Path** (single), $6\frac{1}{4}$ " (165mm.), $6\frac{1}{2}$ " (170mm.), 7" (177.5mm.). State type and length required. Including set of five chainwheel bolts ... **174/6**

CAMPAGNOLO ALLOY RINGS & ACCESSORIES

$\frac{3}{32}$ " available from 44 to 57 tooth. 44-52 all at ...	32/9
Larger sizes (i.e. 53 to 57) as single rings or as part of a chainset cost more according to size. Extra each tooth over 52 ...	1/6
$\frac{1}{4}$ " available from 46 to 60 tooth. From 46 to 52T ...	65/6
Larger sizes (53 to 60). Extra each tooth over size 52 ...	3/-
$1" \times \frac{3}{16}$ " available from 23 to 30 tooth. 23 to 26T ...	65/6
Larger sizes (27 to 30). Extra each tooth over size 26 ...	3/-
Chainwheel fixing bolts. Nos. 754/755 for double set. Nos. 761/762 for single sets. Set of five complete with locknuts ...	15/-
Spacing collars that allow a single ring to be used with a double chainset. Set of five ...	2/6

TOOLS. Extractor Tool. No. 770, for withdrawing crank ...	10/-
Axle Locking Spanner. No. 769 ...	9/-
Allen Key. No. 767, smaller size than for gear ...	2/6
Peg Spanner. No. 768, for locking chainwheel bolt ...	1/-

CHATER LEA CHAINSETS

CRANKS ONLY. Top quality, heat treated, steel cranks of fluted rectangular design, the basis of all the Chater Lea sets. Available $6\frac{1}{4}"$, $6\frac{1}{2}"$ or $7"$ length with special short cotters and chainwheel screws Cranks per pair ... 70/-

CHATER LEA RINGS & ACCESSORIES

For Single chain sets add to cranks ring size required:

$\frac{1}{4}"$ Chainrings	$\frac{3}{32}"$ Chainrings	$\frac{3}{16}"$ inch pitch
36-38T ... 19/6	36-38T ... 21/-	21T ... 21/6
40T ... 20/-	40T ... 21/6	22T ... 22/-
42T ... 20/-	42T ... 22/-	23T ... 23/-
44T ... 20/6	44T ... 22/6	24T ... 24/-
46T ... 21/-	46T ... 23/-	25T ... 25/-
47T ... 21/6	47T ... 23/6	26T ... 26/6
48T ... 22/-	48T ... 24/-	27T ... 28/-
49T ... 22/6	49T ... 24/6	28T ... 29/6
50T ... 23/-	50T ... 25/-	29T ... 31/-
52T ... 24/6	52T ... 26/6	
56T ... 27/6	56T ... 29/6	

Double Sets. Add to cranks, inner and outer ring plus:	
No. 1689 alloy adaptor ... 10/-	No. 37. 126 long bolts, set 2/-
46T inner ring $\frac{3}{32}"$... 23/-	49T outer ring $\frac{3}{32}"$... 24/6
47T 23/6	50T 25/-
49T 24/6	52T 26/6

Single chainwheel bolts No. 34.126 $\frac{1}{4}"$ long, set of three ...	1/9
No. 35.126. For original fluted type (2 arm) cranks $\frac{5}{16}"$ long ...	1/9

WILLIAMS CHAINSETS

AB77 Alloy Cotterless adaptor set. A new introduction causing much interest at the 1962 Cycle Show. A five pin multi-splined crank carries an adaptor to which rings of Campag. dimensions are fitted by means of five sleeves. The adaptor will fit any five pin crank so great interchangeability with existing equipment is achieved. The taper splined bracket set will be made initially in two lengths for single or double chainsets.

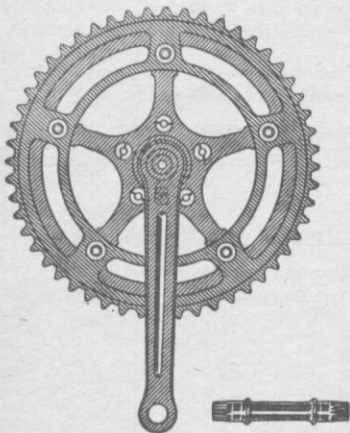
Double Set complete with tools. Ring sizes from 46 to 50T 198/6

Single Set complete with tools. Ring sizes from 46 to 50T 173/-

Chainrings $\frac{3}{32}$ " alloy. Sizes 46T, 47T, 48T, 49T, 50T ... 25/6

Larger Sizes. Separately or with set. Available initially up to 55T.

Extra for each tooth over size 50 ... 1/9



Adaptor with all the fittings ... 28/6

Adaptor only double or single ... 22/-

Crank fixings set of five (adaptor to AB77 crank) ... 5/-

Ring fixings set of five sleeves single or double ... 6/6

Cranks complete with B/B set and Toolset $6\frac{1}{2}$ " only ... 119/-

Cranks only ... 73/10

Bracket set double or single ... 43/-

Tool set complete 16/9

Allen Key/Box 6/-

Extractor/Pedal 7/-

Extractor Tool 6/6

WILLIAMS STEEL CRANKS ONLY

B100. 5 pin, screw fitting, $6\frac{1}{2}$ " or 7" square section ... pair 16/6

Right only ... 10/9 Left only ... 8/6

C34. 3 pin, screw fitting, $6\frac{1}{2}$ " or 7" square section ... pair 18/-

Right only ... 12/- Left only ... 8/6

C34. 3 pin, sleeve fitting, $6\frac{1}{2}$ " or 7". Less sleeves ... pair 14/6

Right only ... 12/- Left only ... 8/6

Extra for $6\frac{1}{2}$ " on all of above, fluted section ... per pair 1/3

WILLIAMS CRANKS (Continued)

C1000.	3 pin, screw fitting, $6\frac{1}{2}$ " narrow section only ...	pair	31/3
	Right only ... 19/9	Left only ...	12/9
C1000.	3 pin, sleeve fitting, $6\frac{1}{2}$ " only. Less sleeves ...	pair	27/9
	Right only ... 19/9	Left only ...	12/9
LC1200.	3 pin, sleeve fitting, $6\frac{1}{2}$ " fluted only. Less sleeves ...	pair	17/9
	Right only ... 13/3	Left only ...	9/3
C1200.	3 pin, screw fitting, $6\frac{1}{2}$ " forged, fluted section only ...	pair	59/6
	Right only ... 48/-	Left only ...	20/6
C1200.	3 pin, sleeve fitting, $6\frac{1}{2}$ " fluted only. Less sleeves ...	pair	56/-
	Right only ... 48/-	Left only ...	20/6

N.B. All sleeved cranks are listed without sleeves. When calculating cost of chainset by adding cost of rings do not forget sleeves are extra and must be included.

WILLIAMS STEEL CHAINRINGS, ETC.

B100.	5 pin, screw fitting, $\frac{1}{8}$ " or $\frac{3}{32}$ " flanged section. Available from 36-60T. Up to size 48T ...	19/-
C34.	3 pin, screw fitting, $\frac{1}{8}$ " or $\frac{3}{32}$ " non flanged section rings from 32-60T. Up to size 48T ...	10/-
C34.	3 pin, sleeve fitting, $\frac{1}{8}$ " or $\frac{3}{32}$ " non flanged section, from 32-60T. All sizes up to 48T ...	10/-
Larger	Sizes for any of above types. 49T to 52T ...	11/3
	54T ... 13/9	56T ... 15/3
	58T ... 16/9	60T ... 19/9
1" pitch x $\frac{3}{16}$ ".	B100 or C34 in comparable size range to above.	
	All sizes up to 24T ... 12/3	25T or 26T ... 13/6
	27T ... 17/3	28T ... 18/6
	29T ... 21/6	30T ... 24/9
D34.	Tandem 3 pin, screw fitting, $\frac{1}{8}$ " only. Outer sizes 44, 46, 48, 52T ...	20/3
	Inner, drum type, 6 pin fitting to outer. 32 or 42T	25/9
D.34.	Tandem 3 pin, sleeve fitting, outer $\frac{3}{32}$ " only. Outer sizes 44, 46, 48 or 52T ...	20/3
	Inner, drum type, 6 pin fitting to outer. 32 or 42T	25/9
C1200.	3 pin, screw fitting, $\frac{1}{8}$ " or $\frac{3}{32}$ ". 44-50T only ...	13/6
LC1200.	3 pin, sleeve fitting, $\frac{1}{8}$ " or $\frac{3}{32}$ ". 44-50T ...	13/6
	51 or 52T ... 18/6	53 or 54T ... 21/-
C1232 or LC1232.	3 pin, sleeve fitting, $\frac{3}{32}$ " only, 'open' design. Outer 49-52T ...	21/-
	Inner, 6 pin fitting to outer, 46-50T ...	9/-
N.B.	C1000 rings are discontinued—fit C34 non flange instead. Fixing Sleeves. When ordering state: For single or double set. $\frac{1}{8}$ " or $\frac{3}{32}$ " chainrings. Set of three complete ...	3/6
Chainwheel bolts.	Square headed pattern ...	each 2d.
	Ditto with hexagonal slotted head as fitted to C1200 ...	each 3d.

T.A. CRANKS

No. 1700 Professionnel Alloy Cotterless. The latest type from this French maker is of very 'square' section, deep fluted at the front with pedal holes blanked off at the back. $6\frac{1}{2}"$, $6\frac{3}{4}"$ or $7"$ long with 5 pin flange, mounted on a square splined axle. Complete with all bottom bracket fittings, but less tools. State whether for single, double or triple chainrings for correct axle length **178/-**

T.A. CHAINRINGS, Etc.

ADAPTOR SETS. These consist of an alloy adaptor which may be fitted to either 3 or 5 pin cranks of standard continental size, with suitable 6 pin fitting ring or rings, making a rigid ensemble.

3 pin Adaptor only: No. 173 for Double rings. No. P173 Single **24/6**

5 pin Adaptor only: No. 175 for Double rings. No. P175 Single **24/6**

No. 25. Set of 5 fixing bolts (adaptor to crank) complete ... **3/9**

No. 62. Set of 6 fixing bolts (double rings to adaptor) complete **8/-**

No. P75. Set of 6 fixing bolts (single ring to adaptor) complete **6/-**

N.B. Chainrings are shown in the sizes normally stocked, but prices in all cases are for rings up to 50T only. Larger sizes see below.

No. 104. Outer rings for adaptor $\frac{3}{32}"$, sizes 47-56T ... **23/6**

No. 106. Inner rings for adaptor (double) $\frac{3}{32}"$, 44-52T ... **23/6**

No. P209. Single adaptor rings $\frac{1}{8}"$ or $\frac{3}{32}"$, sizes 44-54T ... **27/6**

CRITERIUM Double rings. Employ an outer ring fixing direct to either 3 or 5 pin cranks, inner ring is bolted on to the outer.

CR203. 3 pin outer $\frac{3}{32}"$, sizes 47-56T. Up to size 50 ... **27/6**

CR205. 5 pin outer $\frac{3}{32}"$, sizes 47-56T. Up to size 50 ... **27/6**

No. 204. Inner ring for either of above types, 44-50T ... **23/6**

No. 64. Set of 6 fixing bolts (ring to ring), Criterium double **6/-**

SINGLE RINGS (bolt direct to crank).

203. 3 pin alloy, $\frac{1}{4}"$ or $\frac{3}{32}"$, sizes 44-56T. Up to size 50 **27/6**

205. 5 pin alloy, $\frac{1}{4}"$ or $\frac{3}{32}"$, sizes 44-56T. Up to size 50 **27/6**

N.B. Larger rings: for every tooth above size 50 add extra cost $\frac{1}{4}$

STRONGLIGHT CRANKS

No. 63. Super Competition Cotterless alloy. A square section fluted crank with a wide five pin fitting for the rings. Developed from the earlier type 57, the crank is now supplied with Allen key locking sleeves which clamp new pattern rings to either side of the arm. Complete with bottom bracket fittings and tools. Crank lengths 6½", 6¾" or 7" 178/6			
No. 57P. Similar to above but with earlier type fittings and rings, for single 57P or 57 rings only 158/6			
No. 49D. Cotterless alloy. Same pattern cranks as both above but with a standard 5 pin flange. In 6½", 6¾" or 7" complete with bottom bracket fittings and tool set 129/6			
No. 55. Competition. 3 pin, 6½", 6¾", 7". Steel cranks			Pr. 47/6
No. 54. Standard. 3 pin 6½" only, chamfered arms. Steel.			Pr. 47/6
No. 45. Competition. 5 pin fitting, 6½" or 6¾" only			Pr. 42/6

STRONGLIGHT CHAINRINGS

No. 63. Double 3/32" dural rings, any combination of the following:			
Sizes 40, 42, 44, 45, 46T	28/6	47, 48, 49T	29/9
50, 51, 52T	34/9	53, 54T	37/9
55, 56T			43/9
No. 57P. Single 1/8" dural rings.			
48-50T	each 36/-	51-52T	each 41/3
53-54	each 45/9	55-56T	each 49/3
No. 57. 3/32" dural rings suitable for 57P set, or as replacements for earlier No. 57 double set. Sizes: 40-46T 28/6			
47-49T	29/10	50-52T	35/6
53-54T	39/6	56T	44/-
No. 12. Double 3/32" outer ring with bolts to fit 49D set:			
49-50	each 34/6	51-52	each 36/6
No. 12 Bis. Double 3/32" inner ring for 49D set, less screws:			
44-48T			each 27/3
Steel Rings 3 pin, 3/32". Sizes: 46-48T 14/3			
49-50T	15/6	52T	18/9
Steel Rings 3 pin, 1/8". Sizes: 46-48T 13/6			
49-50T	15/-	52T	18/-
Chainwheel bolts. Stronglight standard each 9d.			
Bushed nut and screw for five pin set each 1/3			
No. 63. Screw, washer and bushed nut for clamping rings 63, ea. 2/-			
No. 12 TER. Bushed nut and screw with separator for No. 49D set (ring to ring) each 2/-			
No. 57. Bushed nut and screw with washer for No. 57 set, for fixing ring to crank each 2/-			
No. 57P. As above for single ring chainset each 2/-			

SIMPLEX DOUBLE CHAINRINGS

Competition Steel 3/32" 3 pin fixing with straight or cranked arms.			
Any combination of replacement rings listed below			32/6
Rings only for inner or outer, 45, 46, 47, 48T			12/6
49-50T	17/3	51-52T	18/-
Competition Alloy 3/32" 3 pin fixing with straight or cranked arms.			
Any combination of replacement rings listed below			42/9
Sizes 45-48T	19/3	49-50T	21/9
51-52T	23/-	53-54T	27/6
Grand Sport Tourist. 5 pin fixing with any combination of rings from: Inner 28-40T, outer 44-50T 27/6			
Inner rings 28, 30, 32T			12/-
Outer 44, 46T			18/6
36, 40T			15/-
48, 50T			19/6

KIDDIE CRANKS

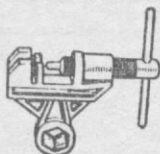
A heavily chromed fitment that reduces the effective crank length by two inches. Easily fitted, the pedal is removed from crank and fitted into the Kiddie crank. A large flat headed bolt clamps both to the crank and shoulders protrude over sides of crank to prevent movement. Enables youngsters to ride on back of tandem, etc. Pair 19/6

CHAINS

REGINA $\frac{3}{32}$ ". Made by this famous Italian firm for use with their freewheel which is 'closer' than average. Very flexible because of less width over the rollers. Ideal for use with all derailleur gears and any $\frac{3}{32}$ " freewheel	12/9
BRAMPTON $\frac{3}{32}$ ". Very strong because of extra width over the rollers but not suitable for all 'close' freewheels	11/5
SEDIS Yellorex $\frac{3}{32}$ ". French manufacture	10/3
SEDIS $\frac{1}{4}$ ". A flexible chain for use with gears	7/-
REGINA BLOCK $\frac{3}{16}$ " x 1". Used by Italian Pro's	33/-
RENOLDS BLOCK $\frac{3}{16}$ " x 1". Well below today's price at	58/9
RENOLDS TWIN ROLLER $\frac{3}{16}$ " x 1". Ideal for grass	24/9

CHAIN LINK REMOVERS

N.B. These extractors are not suitable for use with Renolds 'Elite' chains which have shouldered rivets and need grinding off.

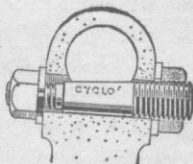


FIFON (illustrated). Bronze extractor with hardened steel punch and adequate leverage. Links may be replaced with same tool. For either $\frac{1}{4}$ " or $\frac{3}{32}$ " chains 8/11

CYCLO Rivoli. Hard revolving peg which can be replaced when worn. For $\frac{1}{4}$ " or $\frac{3}{32}$ " chains. Long lever 6/7

COTTER PINS

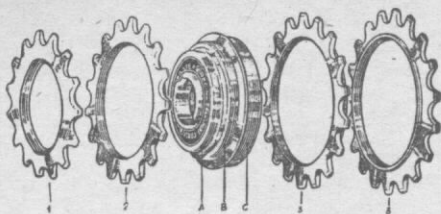
CYCLO (as illustrated). An asset to the home mechanic. Cotter can be drawn out with spanner	Pr. 2/2
STANDARD size. Chrome plated.	Pr. 9d.
UNMILLED . No flat. Chrome.	Pr. 9d.
CONTINENTAL size. Ditto.	Pr. 1/6
WILLIAMS . Chrome plated	Pr. 1/1
CHATER . Heavily plated, short.	Pr. 3/-



ENTRY FORMS

R.T.T.C. forms. As required by R.T.T.C. regulations. With blank top in which race details may be entered. (We cannot undertake to print details.) Plus postage at following rate: 100, 1/-; 200, 2/-; 300, 2/3; 400, 2/6; 500, 2/9. Forms packed in 100 lots. Per 100 4/6

REGINA MULTIPLE FREEWHEELS



The Italian block which is designed for use with all gears and particularly with quick release hubs, being much 'closer' than most, with narrow body and flush back. The ground and lapped races are set as far apart as possible to kill 'float' and ensure smooth running.

Compare REGINA to any other and note the superior finish and smoothness of operation.

4 Speeds. Bore A carries No. 1 cog (14-16T), bore B the second cog No. 2 (16-20), bore C two cogs No. 3 (17-28T).
FOUR SPEEDS. Sizes as listed above ... 18/6

5 Speeds. The smallest cog No. 5 has a male thread, inserted inside a special cog No. 4, which fits the small bore A, making a double sprocket.

N.B. If a 13 tooth top sprocket is required, this cog No. 7, will not fit cog No. 4 but is inserted into a cog No. 6 with a smaller diameter female thread available in sizes 14, 15 and 16T.

FIVE SPEEDS are therefore available:—Top (14-16T), Second (15-18T), Middle (16-20T), Bottom cogs with left thread (17-28 but no 27); or with 13T Top, 14, 15, 16T Second, Middle and Bottom as above. Any ratio 21/6

6 Speeds. By fitting another sprocket (No. 8) between the standard next to five cog (No. 4) and a 13T type cog (No. 7), six sprockets may be mounted on the standard body. This cog (No. 8) is available 14, 15 or 16T.

SIX SPEEDS are available: Top (No. 7) 13, 14 or 16T, with (No. 8) 14, 15 or 16T, screwing into (No. 4, standard next to top cog) 15-18T, middle (No. 2) 16-20T and low cogs (No. 3) 17-28T ... 24/6

Spare Sprockets. 13T-28T (no 27). Each ... 3/-
Freewheel Body only. Each ... 6/6

BENELUX MULTIPLE FREEWHEELS

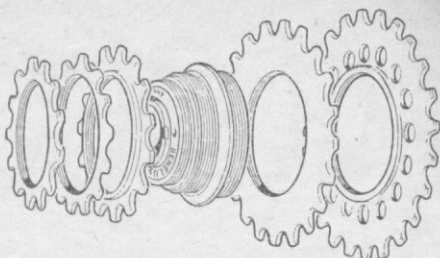
'STAR'

FIVE

SPEED

FREE-

WHEEL



This most recent introduction by 'Cyclo' is available only as a five speed $\frac{3}{32}$ " block. A wide centre thread takes two sprockets so that the top cog has its own thread and no 'double' cog is required. Ratios are:— top—13-16T, middle—2 cogs 14-20T, low—2 left hand thread cogs 16-28T. Price complete ... 22/6
Body only 7/6. Spare cogs 13-28T (no 27T) 3/-

Benelux 3. Top 13-16T, 2nd 15-18T, 1st 17-28T ... 21/-

Benelux 4. Top 13-16T, 3rd and 4th 15-19T, 1st and 2nd 17-28T, $\frac{1}{8}$ " 25/2

Benelux 4. Top 13-16T, 3rd and 4th 16-20T, 1st and 2nd 18-28T, $\frac{3}{32}$ " 21/8

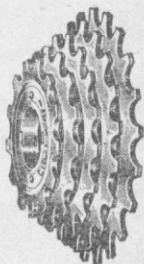
Benelux 5. Top 13-16T, 3rd and 4th 16-20T, 1st and 2nd 18-28T, $\frac{3}{32}$ " 25/-

Benelux 6. As 5 speed but 14/16, 14/15, 13/15 or 13/14 double cog instead of top sprocket ... 30/-

Benelux Spare cogs $\frac{3}{32}$ " 13-28T 3/2

$\frac{3}{32}$ " double cogs for six speed ... 8/2

$\frac{1}{8}$ " cogs for 3 or 4 blocks ... 4/-



FREEWHEEL REMOVERS

REGINA. Solid Block with heavy dogs to engage free-wheel. Flats to fit vice or spanner. Centre hole large enough to clear Continental hub nuts. Case hardened

CYCLO. Block pattern for Benelux freewheels 3/9
2/9

HURET

ALLVIT 1900. The latest gear to be produced by this famous French firm employs a parallelogram action via strong pressed plates with adjustable pivots. The action is mounted in a chrome plated arm of stiff 'U' section. A double roller cage, with vertical as well as lateral movement, ensures a good chain-wrap that will allow differences of 15 teeth on rear and 15 teeth on front changer. Suitable for 3, 4 or 5 speed, neat lever is fitted with a white rubber. **De Luxe Finish** 60/-
Standard Finish ... 39/6



ALLVIT ENSEMBLE De Luxe Finish

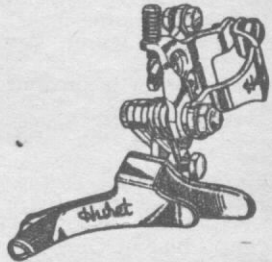
Both front and rear gears illustrated on this page are combined with a neat twin lever for down tube, fitted with white rubbers ... 90/-
Standard Finish ... 70/-

ALLVIT FRONT

A further development of the parallelogram system which is of similar design to the rear. A smoothly operating changer, supplied with left down tube lever on twin collar so that right lever may be used to convert to twin control ... 32/6

T.D.F. REAR

A very efficient double roller gear. State which pattern, 3, 4 or 5 speed, required ... 29/6



FRONT CHANGER. Cable operated from a double right hand lever that is supplied with the gear. Simple mechanism ... 27/6

T.D.F. ENSEMBLE. Front and rear gears operating from a double right hand lever. A sound combination, good value at ... 45/-

CAMPAGNOLO GRAN SPORT



The gear whose patented action has been copied by all others. The deformable parallelogram ensures a rapid and positive gear change under any conditions. The roller cage is fully supported in all positions by the body which is machined in bronze. Pivot pins are bushed with phosphor-bronze for long life. The first class materials used throughout, combine with precision machining to produce an article whose mechanical efficiency and superb

finish has set new standards for the cycle industry.

Spring loaded adjusting screws allow any number of gears to be used with the same mechanism over a range of ratios with a difference of 16-18 teeth.

After another tremendously successful season in the Continental Classic Road Races, Campagnolo gears are being ridden by Anquetil, Altig, Darrigade, Elliott and our own, up and coming, Vic. Denson during 1963.

GRAN SPORT GEAR complete with hanger ...	80/-
Bare Cable model, stainless outer casing and clips	83/-
Handlebar Control model, longer cable, etc. ...	89/-
Handlebar Control Bare Cable model, with clips, etc. ...	92/-
Pump holder , incorporated in lever, extra ...	4/-

SPORT GEAR, Single roller (Range 16-22T only) 36/4

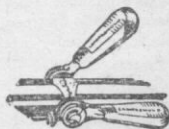
Lever Rubbers. Fitting over down tube, handlebar control or hub quick release levers. In Yellow, Red, Black, Green, Blue or Grey ... each 1/-

Allen T Key No. 143/2 ... each 2/6

Roller Cone Spanner No. 97 ... 9d

Spoke Disc No. 55 ... each 3/11

Campagnolo Transfer showing the trade mark in World Championship colours ... 6d.



GRAN SPORT FRONT CHANGER

The first changer to have a fully enclosed action, fitting neatly behind the seat tube. Cable from a left hand lever operates a lever transferring the thrust against the end of the cage bearing rod. The shaft is set at an angle so that the space between cage and rings remains constant, resulting in a clean change every time.



Changer complete with left
53/6

Bare Cable model , stainless outer casing and clips	55/6
Handlebar Control , with extra cable clips ...	62/6
Handlebar Control with Bare Cable and clips ...	64/6
GRAN SPORT ENSEMBLE	
Front and rear systems with twin d/tube lever	133/6
Ensemble with Bare Cable and double clips ...	136/6
Handlebar Control , with extra cable clips ...	151/6
Handlebar Control with Bare Cable and clips ...	154/6

RECORD CHANGER

The most up-to-date changer that incorporates the same principles as the rear mechanism. Simple in operation as all good gears are, the cage is mounted on short arms with a strong coil spring to hold the cage in position against the single cable. Hinged fixing clips.



Changer complete with d/tube lever, etc. ...	72/-
Bare Cable model , stainless outer casing and clips	74/-
Handlebar Control model , extra cable clips ...	81/-
Handlebar Control with Bare Cable and clips ...	83/-

RECORD ENSEMBLE

Record front and Gran Sport rear , twin lever ...	152/-
Ensemble with Bare Cable , double clips, etc. ...	155/-
Handlebar Control , with extra cable clips ...	170/-
Handlebar Control with Bare Cable and clips ...	173/-

SPORT FRONT CHANGER. Hand operated by a short lever fitting forward of the seat tube ... 21/8

CAMPAGNOLO GEAR AND FRONT CHANGER SPARES

No. 145 H'bar Rear Inner	3/9	No. 218 H'bar Front Inner	3/-
" 146 H'bar Rear Outer	2/6	" 219 H'bar Front Outer	2/6
" 605 D/tube Rear Outer	2/-	" 607 D/tube Front Outer	2/-
" 606 D/tube Rear Inner	1/6	" 608 D/tube Front Inner	1/3
Cable Clips with Nut & Bolt	1/-	" 649 Clip for Brake Cable	1/2
No. 171/2 Nut/Bolt for Clip	6d.	" 623 Front Steel Outer	2/-
" 622 Rear Steel Outer for Bare Wire	2/-	" 625 Steel Outer for H'bar	5/4

GRAN SPORT REAR MECHANISM

Mechanism less Cable and Lever	64/-	Body only	23/4
No. 80/2 Gear Fixing Plate	1/3	No. 84 Spring holding bolt	9d.
" 88 Cable Fixing Plate	9d.	" 89 Cable clamp screw	9d.
" 90/1 Roller stop screw	8d.	" 93 Roller axle	1/-
" 92 Inner roller plate	5/-	" 94 Roller cone bolt	1/3
" 96 Roller cone adjuster	1/-	" 98 Traverse spring c.p.	1/2
" 99 Adjuster screw	6d.	" 100 Roller only	6/3
" 114/1 Spring retain. plate	9d.	" 117/8 Cable adj. & nut	1/3
" 120 Adjuster screw spring	4d.	" 124 Fixing plate bolt	9d.
" 125 Fixing plate nut	9d.	" 166 Main pivot bolt	3/9
" 167 Tension spring	1/3	" 168 Outer roller plate	5/6
" 169 Roller complete	7/3	" 506 Tension pivot bolt	3/9

GRAN SPORT FRONT CHANGER

Mechanism complete less lever and cable	37/6		
No. 202 Main body	16/-	No. 203 Inner control arm	1/3
" 204 Cage bearing rod	1/-	" 205/6 Cable clamp	1/4
" 209 Inner main spring	1/-	" 210 Frame clip bolt	1/-
" 211 Frame clip	2/-	" 212 Control arm pivot screw	8d.
" 213 Cage fixing screw	8d.	" 214 Cage only	10/8
" 215 Cage spacer bolt	6d.	" 214 Bis Cage complete	12/4
" 216 Cage spacing roller	6d.	" 217 Cage spacing nut	6d.
" 226 Adjuster bolt spring	4d.		
" 227 Adjuster bolt	8d.		

LEVERS AND LEVER SPARES

No. 1012/3 H'bar control	21/-	No. 1014 Twin D/tube lever	25/6
" 1013/1 Rt. D/tube lever	12/9	" 1015 Left D/tube lever	12/9
" 200/2 H'bar control body	7/8	" 201 H'bar lever only	6/4
" 137 Sector expan. screw	2/-	" 138 Sector each	1/3
" 139/2 Hexagonal screw	9d.	" 139/1 Pivot lock nut	6d.
" 140/1 Pivot screw	9d.	" 174/1 Friction washer	2d.
" 174 Friction washer	2d.	" 142 Segment retainer	2d.
" 600/2 Right back plate	1/3	" 173 Rubber lever cap	1/-
" 602 Left D/tube lever	4/8	" 601 Right D/tube lever	4/8
" 604 Friction adj. screw	8d.	" 603 Friction cover	8d.
" 609 Clips nut & bolt	9d.	" 604/1 Friction adj. w/nut	1/3
" 611 Left lever collar	7/8	" 600 Right lever collar	7/8
" 611/2 Left back plate	1/3	" 612 Cable stop	8d.
" 610 Twin lever collar	12/9	" 619 Cable ferrule	3d.
" 660 Brazed-on boss	1/6	" 661 Brazed boss collar	8d.

RECORD FRONT CHANGER SPARES

1052/1 System complete less lever and clips	56/-
773 Body	16/8	774 Adjusting screw	...	6d.
775 Adj. locking spring	4d.	776 Body clamp bolt	...	1/4
777 Body clamp nut	6d.	778 Cable clamp arm	...	8/-
779 Cable clamp bolt	9d.	780 Cable clamp washer	...	9d.
781 Upper pivot pin	8d.	782 Short pivot arm	...	6/4
783 Lower pivot pin	8d.	784 Bis Cage complete	...	12/4
784 Cage only	11/4	785 Bronze pivot bush	...	4d.
786 Upper pivot	1/-	787 Tension coil spring	...	1/3
788 Lower pivot	1/-	789 Pivot bolt nut	...	6d.
790 Cage spacer	6d.	791 Cage spacer bolt	...	6d.

QUICK RELEASE HUB SPARES

Front Blocage complete	16/8	Rear Blocage complete	16/8
Front Hollow spindle comp.	9/8	Rear Hollow Spindle Comp.	11/4
1 Ft. Spindle locknut	9d.	18 Conical skewer spring	8d.
19 Ft. Q/R spindle only	4/-	25 Ft. Gran Sport cone	2/4
25/R Ft. Record cone	2/4	29 Rear spindle only	4/8
32 Rear G.Sport cone	2/4	32/R Rear Record cone	2/4
33 Rear spindle l/nut	1/4	35 Ft. spindle washer	4d.
36 Rear spindle washer	4d.	46 Rear spacing collar	8d.
59 Conical adj. comp.	9/-	60 Q/R lever housing	3/8
61 Q/R lever complete	4/-	64 Ft. skewer only	3/8
65 Rear skewer only	4/-	738 Rear Record ball cup	4/8
737 Ft. Record ball cup	4/8	740 Rear Record dust cap	1/8
739 Ft. Record dust cap	1/8		

SOLID SPINDLE HUB SPARES Where different to Q/R

Track Front spindle comp.	11/-	Track Rear spindle comp.	12/-
19/P Track Ft. spindle only	4/4	29/P Rear Track spindle	5/-
33/P Track Rear l/nut	1/4	743 Sprocket lock ring	3/-
Gran Sport spindle comp. Ft.	7/-	G.S. Rear spindle comp.	7/8
Gran. Sport Ft. spindle only	2/8	G.S. Rear spindle only	3/-

BARE WIRE GEAR STOP AND CABLE CLIPS

No. 626. Down tube stop for front and tunnel for rear gear ... 5/8

No. 627. Down tube right gear tunnel only ... 4/8

No. 628. Down tube stop for front changer only ... 4/-

No. 629. Down tube double stop for handlebar control ... 4/4

No. 636. Chainstay gear cable stop 13 mm. ... 2/8



CABLE CLIPS

No. 147. Double down tube 1/-

No. 148. Single down tube 1/-

No. 149. Chain stay 22mm. 1/-

No. 659. Chain stay 15mm. 1/-

No. 170. Chain stay 13mm. 1/-

CAMPAGNOLO CLIPS

PORTA-POMPA. Special clips in the usual high finish expected from Campagnolo. Trade marked.

Left lever with pump-holder 16/9

Right lever with pump-holder 16/9

Twin lever with pump-holder 29/6

No. 632. Simple pump-holder 7/-

No. 633. Holder and twin stop 8/-

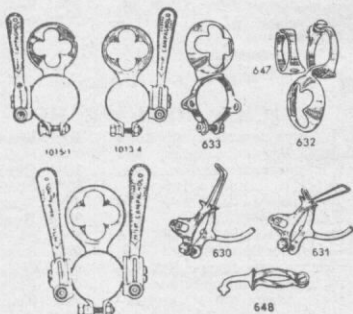
No. 647. Top tube adaptor shim 1/4

No. 630. Tunnel/stop with d/tube pump cradle 7/-

No. 631. Tunnel/stop with seat tube cradle ... 7/-

No. 648. Simple pump peg 4/-

These clips allow a pump to be fitted in almost any position, either with or without pump adaptor No. 1030.



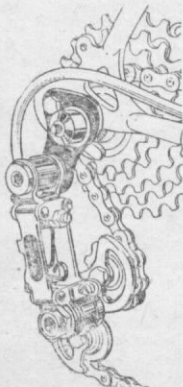
BENELUX GEARS

SPORT P2. Produced to meet the demand for a parallelogram action in the 'popular' price range. This gear, fitted as 'equipment' by many cycle makers, has proved efficient in operation. With right hand down tube control. Complete ... 45/-

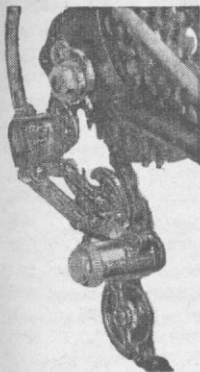
MARK 8 Tourist

Designed to operate with sprockets from 13-28 teeth and up to 15 tooth jump on the front changer. Fitted from the rear drop-out, the 'Tourist' is very much like the Mk. 7 illustrated opposite but is fitted with a long jockey arm and more powerful tension spring to absorb the greater variation in chain length caused by wide ratios

35/-



BRITISH BENELUX



SUPER 60 SIX. A special version of the well tried Super 60 gear enabling the throw to encompass a 6 speed free-wheel made by Cyclo, in ratios from 13T to 28T. A widely spaced hub is specially produced by British Hub Co. for use with this gear and the recommended maximum range is 13T to 26T.
Complete with freewheel ... 98/6

SUPER 60 (Illustrated). Built in the modern style of construction, employing twin parallel moving arms to support the roller cage and chain tensioning spring. Positive adjustable stops limit gear throw and arm swing. Well chromed with attractive coloured enamel 'motif'. Suitable for any block, $3 \times \frac{1}{8}"$ to $5 \times \frac{3}{32}"$. Complete but less freewheel **70/-**

MARK 7. (Illustrated below). The most successful shaft mounted double roller gear. With adjustable arm movement stop and simple chain tension control. Easy to fit and maintain. Two models: one for $4 \times \frac{1}{8}"$ and $5 \times \frac{3}{32}"$, the other suits $3 \times \frac{1}{8}"$ and $4 \times \frac{3}{32}"$ **31/6**

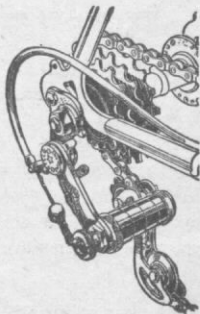
SPORT FRONT CHANGER.

A new cable controlled front changer designed to work over two or three chainrings. The back plate of the cage has been deepened to facilitate operation over wide ratios. A square shaft minimises cage 'rock' and the whole movement is solidly controlled. Supplied with double clip and left lever only as below:—

SPORT/Mk. 7. Changer with Mk 7 left lever and double clip, so that twin lever may be assembled ... **30/-**

SPORT/P2. Changer with P2 left lever and double clip **31/6**

SPORT/S60. Changer with Super 60 lever and double clip **32/6**



SHAN FRONT CHANGER. Rod controlled by a long cranked lever pivoted at a swivel-clip on the down tube. A very positive change obtained but rider must stretch down between legs **26/3**

SIMPLEX GEARS

PRESTIGE 532

This model offers an entirely new approach to cycle gearing. The main parallelogram is made of plastics which it is said will stand far more distortion than steel. The one model will operate silently and efficiently over all types of ratios with a range of up to 32 teeth. No maintenance is required as the Nylon rollers and body pivots are self lubricating. Complete with white plastic lever and clip. No. 532P. Std. model 39/6
 No. 532N for use with Simplex forged rear ends ... 39/6
 No. 532N/C for use with Campag. forged rear ends 42/6



PRESTIGE FRONT

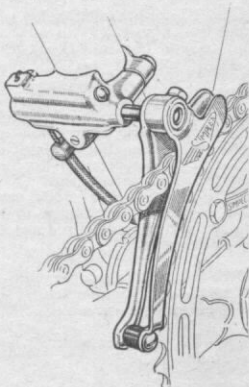
AV223. The working parts of this changer are set in a white plastic body to match the gear. Supplied with plastic left lever and double clip ... 33/9

PRESTIGE ENSEMBLE

Above gears with twin lever for Std. or Simplex ends ... 69/9
 For Campagnolo ends ... 72/9

COMPETITION De Luxe Changer

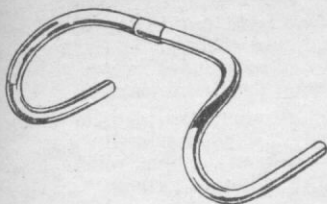
A hand operated rod control from a swivel clip on the down tube. Deep cage gives positive change 21/-



STURMEY ARCHER HUB GEARS

A.W. Standard wide ratio 3 speed, Flick control	49/6
F.W. Standard wide ratio 4 speed, Flick control	52/10
F.M. Medium ratio 4 speed, Flick control	49/6

HANDLEBARS Alloy



ALLEZ MAES

The most popular shaped bend in this country and most commonly used on the Continent. The 'square' form gives comfortable hand positions on both the 'tops' and 'drops' with the brake levers sitting straight forward, allowing full use

of the hoods. In heavy gauge alloy of $\frac{15}{16}$ " diameter the centre is bulged to 1" for rigid fitting in the stem. $15\frac{1}{4}$ " wide from centre to centre and $5\frac{1}{4}$ " deep 13/6

G.B. ALLOY BENDS WITH ENGRAVED FERRULE

With a 5" raised, engraved centre with internal reinforcement. **Ventoux.** Similar to Maes but 1" deeper and $\frac{1}{2}$ " longer forward reach.

Tourmalet. Between Maes and Ventoux $5\frac{1}{4}$ " x $15\frac{1}{4}$ " x $3\frac{1}{4}$ " ... 19/6

Chrome Plated on Alloy. Either of the above. High polish 26/-

G.B. ALLOY BENDS WITH BULGED CENTRE

Maes $5\frac{1}{8}$ " x 15" x $3\frac{1}{4}$ ". **Olympic** $5\frac{1}{8}$ " x $14\frac{1}{2}$ " x $4\frac{1}{4}$ ". **Road Champion** $6\frac{1}{4}$ " x $15\frac{1}{4}$ " x $2\frac{1}{8}$ ". **Touring** 4" x $15\frac{1}{4}$ " x 4". **Wide Touring** 4" x $17\frac{1}{2}$ " x 4". **Ventoux. Tourmalet.** Measurements centre to centre, drop, width and reach respectively, all at 17/-

G.B. FLAT ALLOY BENDS (Non engraved)

All Rounder $1\frac{1}{4}$ " x 23" x $1\frac{1}{4}$ ". **Comfort** $1\frac{1}{4}$ " x $19\frac{1}{4}$ " x 3", either 12/6

HANDLEBARS Steel

G. B. ENGRAVED. Maes and Olympic patterns only, $\frac{15}{16}$ " diam. with centre bulged to 1" diam. Highly polished chrome finish. Either type 18/-

CINELLI. Bends from this famous manufacturer are formed from high grade steel and the finish is brilliant chrome plate. A range of shapes in three separate groups are available as follows:

ROAD PATTERN ENGRAVED. $\frac{15}{16}$ " with 1" diam. centre:

No. 15 **Tour of Britain** $6\frac{1}{4}$ " x $15\frac{1}{4}$ " x $3\frac{1}{4}$ ". No. 16 **Campione del Mondo** $5\frac{1}{4}$ " x 15" x $3\frac{1}{4}$ ". No. 17B **Giro d'Italia** $5\frac{1}{4}$ " x 15" x $4\frac{1}{4}$ ". No. 17D **Special Giro d'Italia** $5\frac{1}{4}$ " deep x 15" wide x $4\frac{1}{4}$ " forward reach, all at 24/-

ROAD PATTERN PLAIN. $\frac{15}{16}$ " with 1" diam. short centre ferrule: No. 11 **San Remo**, $6\frac{1}{4}$ " x 15" x $3\frac{1}{4}$ ". No. 12 **Gran Fondo**, $6\frac{1}{4}$ " x 15" x 2". No. 13 **Koblet**, 7" x $15\frac{1}{4}$ " x 3". No. 15 **Tour of Britain**, $6\frac{1}{4}$ " x $15\frac{1}{4}$ " x $3\frac{1}{4}$ ". No. 16 **Campione del Mondo**, $5\frac{1}{4}$ " x 15" x $3\frac{1}{4}$ ". No. 17B **Giro d'Italia**, $5\frac{1}{4}$ " x 15" x $4\frac{1}{4}$ ". No. 17 **Corsa Strada**, 6" deep x 15" wide and $3\frac{1}{4}$ " forward, all at ... 20/-

TRACK PATTERN PLAIN. $\frac{15}{16}$ " diam. heavier gauge steel with 1" diam. centre. No. 14 **Pista**, 7" x 15" x $5\frac{1}{4}$ ". No. 18 **Madison**, $6\frac{1}{4}$ " deep x $14\frac{1}{4}$ " wide x $4\frac{1}{4}$ " reach, both at 24/-

HANDLEBAR TAPE

There are many tapes available but 'Allez' Twill and 'Quelda' Plastic still maintain their place as the most popular. With full five-yard rolls and $\frac{1}{4}$ " width, they are the best value obtainable on the British market.

ALLEZ

TWILL. A stout herringbone pattern that provides a good non-slip grip. In colours: black, white, blue, yellow, green, red or latest addition, orange roll 1/10½

QUELDA Embossed Plastic. With self adhesive coating on the back for simple fitting. Six colours: black, white, blue, yellow, red or green roll 1/9

GEM Embossed Plastic in three yard rolls $\frac{1}{4}$ " width. Black, green, white, red, blue, or ice-blue ... roll 1/-

Translucent Colours. Ruby, emerald, magenta, sapphire-blue (both types non-adhesive, seal with heat) roll 1/-

HANDLEBAR PLUGS

DUNLOP (illustrated). A tough rubber with expander screw to lock it into the end of the bar.

Black Pair 1/9
Red or off-white Pair 2/-

SHOCKSTOP. Handlebar plug.

Ridged for grip. **Blue, black, claret, green, beige or grey** Pair 1/-



HANDLEBAR STEMS

IL PRIMO (Illustrated).

Popular steel stems of lapped design with sloping extensions of various lengths and a semi-drophead clip. The bright chrome offset by a smart three colour badge giving a most distinctive appearance.

2¼" or 2¾" forward extension	18/-
3¼"	19/-
3¾"	20/-
4¼"	21/-
4¾"	22/-



G.B. HANDLEBAR EXTENSIONS

New Style stems made from solid forgings in light alloy. Following the Continental trend with flush back lap and 'rounder' clip set central to the extension.

2 $\frac{3}{4}$ " 23/-

3 $\frac{1}{2}$ " 24/6

Chrome Plated finish. Extra ... 3/-

Spearpoint Alloy. Made from solid as the above, but with the oval section finished off by a long spearpoint running from the lap to the semi underslung clip.

2" 17/6 2 $\frac{3}{4}$ " 18/-

3 $\frac{1}{2}$ " 19/9 4" 21/-



CINELLI H/BAR EXTENSIONS

PLAIN STEEL. Good looking steel stems from the famous firm of Cinelli cycle makers from Milan. The heavily chromed stems are distinguished by extra-wide handlebar clips. All joints are smoothly brazed with very clean lines. Various lengths: 2 $\frac{3}{4}$ ", 3 $\frac{1}{2}$ ", 3 $\frac{3}{4}$ ", 4 $\frac{1}{8}$ ", 4 $\frac{1}{2}$ " or 5 $\frac{1}{8}$ ", all at 27/-

CINELLI BADGED. As above but with the addition of a colourful Cinelli crest badge. Very smart. All sizes 30/-

RACING MUDGUARD EXTENSIONS

ALLOY. A useful accessory to the racing man or anyone that wishes to avoid the wind resistance caused by a full mudguard. Short polished alloy deep sectioned extensions for front or rear stop grit and wet from being thrown into the face and offer protection to saddle and lower back.

Front single bracket 2/6

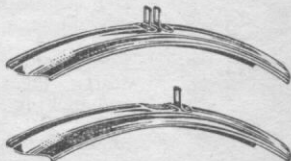
Rear double bracket

2/10

CELLULOID White

Flatter ribbed section.

Front or Rear 2/6



STAINLESS. Weinmann 10". Highly polished guard of sturdy cross section. Ridged at front and back. Pair 10/-

N. Road C.C. 22 Wingate House
 M. London C.C. Burna Court. Rd. 6.
 Ken Vmney

GEAR TABLE 27" WHEELS

	36	38	40	42	44	45	46	47	48	49	50	51	52	54
12	81.0	85.5	90.0	94.5	99.0	101.2	103.5	105.8	108.0	110.3	112.5	114.7	117.0	121.5
13	74.7	78.9	83.1	87.2	91.4	93.4	95.5	97.6	99.7	101.8	103.8	105.9	108.0	112.1
14	69.4	73.3	77.1	81.0	84.8	86.7	88.7	90.6	92.6	94.5	96.4	98.3	100.3	104.1
15	64.8	68.4	72.0	75.6	79.2	80.9	82.8	84.6	86.4	88.2	90.0	91.8	93.6	97.2
16	60.8	64.1	67.5	70.9	74.2	76.0	77.6	79.3	81.0	82.7	84.4	86.1	87.7	91.1
17	57.2	60.3	63.5	66.7	69.9	71.5	73.0	74.6	76.2	77.8	79.4	81.0	82.6	85.7
18	54.0	57.0	60.0	63.0	66.0	67.5	69.0	70.5	72.0	73.5	75.0	76.5	78.0	81.0
19	51.2	54.0	56.8	59.7	62.5	64.0	65.4	66.8	68.2	69.6	71.0	72.5	73.9	76.7
20	48.6	51.3	54.0	56.7	59.4	60.8	62.1	63.4	64.8	66.1	67.5	68.8	70.2	72.9
21	46.3	48.9	51.4	54.0	56.6	57.9	59.1	60.4	61.7	63.0	64.3	65.5	66.8	69.4
22	44.2	46.6	49.1	51.5	54.0	55.2	56.4	57.7	58.9	60.1	61.4	62.6	63.8	66.2
23	42.3	44.6	47.0	49.3	51.6	52.8	54.0	55.2	56.3	57.5	58.7	59.9	61.0	63.4
24	40.5	42.7	45.0	47.2	49.5	50.7	51.7	52.9	54.0	55.1	56.2	57.3	58.5	60.7
25	38.9	41.1	43.2	45.4	47.5	48.6	49.7	50.8	51.8	52.9	54.0	55.1	56.2	58.3
26	37.4	39.5	41.5	43.6	45.7	46.7	47.8	48.8	49.8	50.9	51.9	53.0	54.0	56.1

GEAR TABLE 26" WHEELS

	36	38	40	42	44	45	46	47	48	49	50	51	52	54
12	78.0	82.3	86.6	91.0	95.3	97.5	99.7	101.8	104.0	106.2	108.3	110.5	112.7	117.0
13	72.0	76.0	80.0	84.0	88.0	90.0	92.0	94.0	96.0	98.0	100.0	102.0	104.0	108.0
14	66.8	70.5	74.2	78.0	81.7	83.5	85.4	87.3	89.1	91.0	92.8	94.7	96.6	100.3
15	62.4	65.9	69.3	72.8	76.3	78.0	79.7	81.5	83.2	84.9	86.6	88.4	90.1	93.6
16	58.5	61.7	65.0	68.3	71.5	73.1	74.7	76.4	78.0	79.6	81.2	82.9	84.5	87.7
17	55.0	58.1	61.2	64.2	67.3	68.8	70.3	71.9	73.4	74.9	76.4	78.0	79.5	82.6
18	52.0	54.9	57.7	60.7	63.5	65.0	66.4	67.9	69.3	70.8	72.2	73.6	75.1	78.0
19	49.2	52.0	54.7	57.5	60.2	61.7	62.9	64.3	65.7	67.0	68.4	69.8	71.2	73.9
20	46.8	49.4	52.0	54.6	57.2	58.5	59.8	61.1	62.4	63.7	65.0	66.3	67.6	70.2
21	44.5	47.0	49.5	52.0	54.5	55.8	57.0	58.2	59.4	60.7	61.9	63.1	64.4	66.8
22	42.5	44.9	47.2	49.6	52.0	53.1	54.4	55.5	56.7	57.9	59.1	60.2	61.4	63.8
23	40.6	42.9	45.2	47.5	49.7	50.8	52.0	53.1	54.3	55.4	56.5	57.6	58.8	61.0
24	39.0	41.2	43.3	45.5	47.7	48.6	49.8	50.9	52.0	53.1	54.2	55.2	56.3	58.5
25	37.4	39.5	41.6	43.7	45.8	46.9	47.8	48.9	49.9	50.9	52.0	53.0	54.1	56.1
26	36.0	38.0	40.0	42.0	44.0	45.0	46.0	47.0	48.0	49.0	50.0	51.0	52.0	54.0

Ask to see Ken. Say I was said to come.

M 22 Colsterworth Rd
N. 5.
Long

HOLDSWORTHY SERVICE

ensures that **YOUR LOCAL AGENT** can obtain
all of the lines listed _____
post-haste!

CATALOGUES OF
W. F. HOLDSWORTH
CLAUD BUTLER
F. H. GRUBB
CYCLES and FRAMES
sent on request

