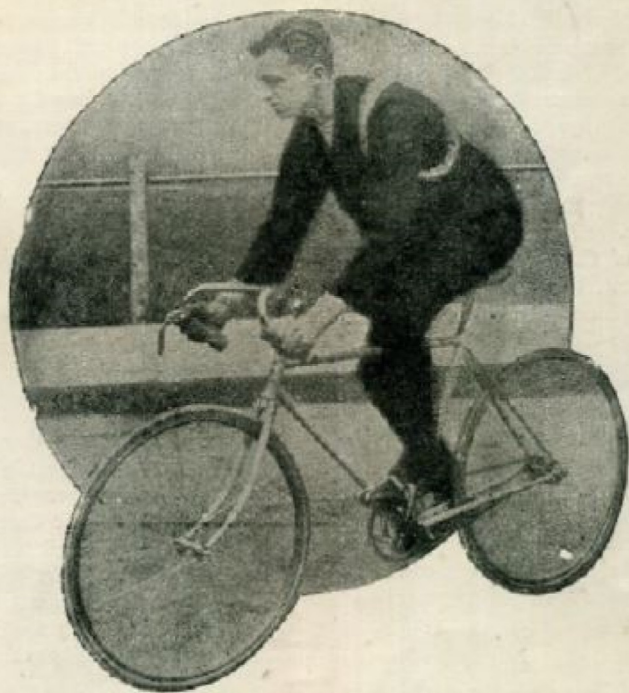


# CLAUD BUTLER



Every machine personally  
supervised by Claud Butler.  
(Photo 1927)

## The Recognised KING of Lightweight CYCLES & TANDEMS

### Important

*All Orders and Enquiries by post must be sent to Head Office and Works:*

**MANOR STREET, CLAPHAM, LONDON, S.W.4**

Phone Manouley 2241 & 2242. Hours 9 a.m. to 5 p.m. Saturdays  
close 1 p.m. (View only by appointment).

*Manufacturers of High-Class lightweight Racing and  
Touring Cycles, Tandems and Tricycles.*

*Officially appointed by the C.T.C. and N.C.U. etc.*

### Showrooms and Sales Depots:

S.W. LONDON

**EAST HILL, WANDSWORTH, LONDON, S.W.18**

Hours of business 9 a.m. to 5 p.m. Saturdays 9 a.m. to 3 p.m.  
Phone Battersea 1981. Closed Thursdays 1.30 p.m.  
(Between Town Hall and Council House).

S.E. LONDON

**34 & 34a, LEE HIGH ROAD, LEWISHAM,  
LONDON, S.E.13**

Hours of business 9 a.m. to 5 p.m. Saturdays 9 a.m. to 4 p.m.  
Phone Lee Green 2072. Closed Thursdays 1.30 p.m.  
(Near Lewisham Clock Tower)

# Introduction

By CLAUD BUTLER

**T**HE Giant Strides made in popularity by C.B. Lightweights and the corresponding increase in demand both at home and abroad is an outstanding example of progress in any industry. It has indeed made CLAUD BUTLER so much a household name among cyclists who appreciate a genuine Lightweight that an introduction to this catalogue is almost superfluous. But the successes and recommendations of C.B. riders, that are my biggest advertisement, bring shoals of enquiries from newcomers to serious cycling, and it is to them that I address these notes.

Cycling on a real Lightweight bicycle is a very pleasureable sport. The ease with which a rider can cover thousands of miles annually will never be realized by riding a heavy roadster or so-called "Sports" type of machine. The first step to enjoyable cycling is to own, what cyclists term a "real" lightweight, built by a specialist who has a flair for design and construction—and they are not so numerous as you may suppose.

All my life I have been connected with the cycle trade. I specialise only in the manufacture of Real Lightweights of the highest class. My machines are definitely different, nothing freakish is ever incorporated in the specification or construction of C.B. cycles and tandems. Their marvellous qualities of speed, lightness and strength are the outcome of original but scientific design and super-grade materials. Whether for touring or racing, place your confidence in me to build you a genuine lightweight.

I have competed, with some success, in the majority of road events and also track races and have enjoyed long distance touring, camping and club life to a very great extent, thereby gaining invaluable experience that has taught me how a real cycle should be built and every C.B. machine is so built under my personal supervision. I am an actual manufacturer, my entire experience and energy is now devoted to the improvement

of the lightweight bicycle, hence the reason why numerous detail refinements and improvements of exclusive design will be found on C.B. machines. No piece-work or mass production methods are employed in manufacture and all frame fitting, brazing, filing, etc., is done in my own Works: Manor Street, London, S.W.4, and are open to inspection.

Claud Butler cycles and tandems are used in nearly all countries and are ridden by the majority of champions. C.B. cycles and tandems were used in the Olympic Games which were held in America 1932, and also used in the World Championships at Copenhagen 1931, Italy 1932, France 1933 and Germany 1934.

E. H. Chambers, that popular English Champion, who has ridden in World Championships, and on two occasions has represented England in the Olympic Games, is a permanent member of my staff, and has been with me for many years. Whatever your cycling query you may rest assured that my experience and advice, and that of my staff, is freely at your disposal to help you enjoy to the full Real cycling.

The proof of Claud Butler successes were never more in evidence than during the past years. C.B. cycles and tandems are seen everywhere on all club runs and at sports meetings throughout the country. When on tour one came across these sturdy lightweights in the most remote parts of the country, in many instances they were loaded up with camping kit, which clearly demonstrates the strength and rigidity of these genuine high class lightweight machines.

I wish to emphasize in conclusion that all C.B. products are built entirely to customers orders. The models listed herein are a guide to price. The specification of all have been thoroughly demonstrated in action and proved themselves sound. My designs and components are thoroughly tested by experts before being offered to the cycling public.



# CLAUD BUTLER HIGH CLASS LIGHTWEIGHT CYCLES & TANDEM

## COMBINE STRENGTH WITH LIGHTNESS

*Mr. Frank Nott, that popular and well-known sportsman, Hon. Secretary of Balham C.C., Road Secretary, S.C.C.U., Assr. Sec. S.R.R.A. writes—*

Dear Claud,

Having now covered well over 20,000 miles on my C.B. "All-Rounder" I want to say how pleased I am with the running and reliability of this machine. As an enthusiastic cycle camper I have given this machine some very rough usage, including leaving it out in the open all night in any old weather. It has carried myself and camping kit over some of the roughest roads in N. Wales, Devon and Cornwall. I have frequently covered well over 100 miles a day with over 25 lbs. of camping kit on board, and on one occasion covered 240 miles in a day.

Believe me it takes a good bike to stand up to the bashings I give it, and the C.B. has never let me down, it is a credit to your fine workmanship. I can honestly say that during my 26 years of racing and long distance touring it is the finest bicycle it has been my pleasure to possess.—Frank R. Nott (London).

### SUNDRY TESTIMONIALS.

Dear Sir,

and when I won the Championship on my C.B. all the lads shouted "Good old Claud." Thanks again for turning out such a splendid bicycle.—E. L. H. (Notts.).

Dear Mr. Butler,

The 3-speed tricycle recently built to my specification has surpassed my wildest expectations... yet another transaction by me with your goodself has ended in perfect satisfaction.



*Mr. W. G. Baxter writes—*

Dear Mr. Butler,

I must write a few lines of appreciation respecting D/G tandem and the semi-upright single bicycle you recently built to my order.

The tandem is a first-class job, its smooth running and easy steering at speed is a revelation to me. The semi-upright is also the hall mark of first class mechanics. I have just finished a long tour of Dorset and Devon and found I could easily ride hills that on previous tours I had to walk. In passing I may tell you in my 39 years of cycling I have owned six singles and four tandems, but my present C.B.'s are my best ever.—W. G. Baxter (Swindon).

### SUNDRY TESTIMONIALS.

Dear Sir,

May I say that my C.B. tandem has given every satisfaction, I shall recommend you to all my friends, no wonder some say "Good old Claud," I am another.—R. F. (Nottingham).

Dear Mr. Butler,

Thanks for your letter, it is very nice to know that you remember me. The tandem is for my wife and I, and I trust you will make as good a job of that as of my single, with which I have always been pleased; I shall never part with it. No wonder you seldom see C.B.'s secondhand.—F. H. (Southend).

Dear Claud,

Just a line to tell you how pleased I am with the new path "iron" you built me. Of course there is only one path bike, and that's a Claud.—D. S. H. (Wisbech).

CLAUD BUTLER, famous all over the world



## Special Features of

# CLAUD BUTLER, High Class Cycles & Tandems

—The recognised "KING" of Lightweights

Please note these points when ordering:—

**1** The value in Claud Butler products lies not only in design, workmanship and finish but also in the careful selection of the right materials, particular attention having been paid to the tubing and fittings of which the frames are built. Each lug is accurately machined and the profile skillfully filed, hereby avoiding distortion during brazing, and the unique cutaway to all fittings actually increases strength. C.B. cycles and tandems are built to give everlasting service and dependability.

**2** First and foremost is the tubing from which the frame is made. C.B. machines are built of Reynolds High Manganese butted tubing and not the cheaper variety of plain gauge. Claud Butler was the first to introduce this tubing to the readers of "Cycling" for bicycle frame construction. The specification of C.B. High Manganese butted tubing is the same as that used for aircraft. It has a high tensile strength and toughness given by the High Manganese content and not by the increase of carbon, it possesses high strength after heating to brazing temperatures. In addition to this and many other advantages considerable weight saving is effected.

**3** "C.B." Front Forks are of a special taper gauge and are butted. The greatest thickness is at the top end inside fork crown. The great advantage of this graduated thickness is obvious. "C.B." forks are the strongest obtainable, all manufacturing process is done cold thus retaining the smooth close surface of the steel giving maximum strength and resilience with minimum weight.

**4** Brazed on Refinements.—Detachable fork blade front lamp bracket, mudguard lugs, reflector eye, chain catch, pump pegs, etc., are brazed to the frame as standard unless otherwise specified.

**5** "C.B." Force Feed Oiling.—The Tecalemit oiling system is fitted as standard to all models. Twin oilers are fitted to bracket in addition to head and

wheels, the oil is then forced direct to the bearings which ensures maximum ease and reliability.

**6** "C.B." Seat Stays.—Fine taper "H.M." steel seat stays of special gauge and dimensions are fitted to all models except "Silver Arrow" and "East Hill" models, on which the usual straight taper is used. In addition to improving the bearings of the machine these "C.B." special taper stays are extremely rigid and light in weight.

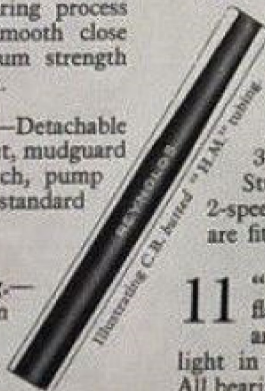
**7** "C.B." Chain Stay an improved design "H.M." chain stay of tapered D section is fitted to many machines. This chain stay is exceptionally rigid and gives far greater tyre clearance, no indent being necessary. This stay is fitted as standard to all path models and is recommended on short wheelbase machines.

**8** Serrated Rear Ends.—The "C.B." forward drop out fork end is the most reliable quick release. It is serrated and special loose washer wing nuts are provided, and when tightened hold wheel securely in correct place—chain tension is automatic. Front fork ends are also solid brazed-up quick release.

**9** Hub Brakes of the internal expanding type are fitted and may be specified to any model where not listed by adjustment in price. By my method of conversion wheels fitted with these powerful brakes can be instantly released.

**10** Variable Gears.—The same simple method of wheel removal applies to machines fitted with these gears of which the following are recommended:—Cyclo 2, 3, 4 or 6 speeds, Tri-Velox 3-speed, Sturmey Archer hub gears and the Witmy 2-speed. Special fork ends, where necessary, are fitted, retaining the quick release.

**11** "C.B." Light Steel Hubs are of the wide flange type pencil barrel, British made and oil retaining. They are extremely light in addition to being neat in appearance. All bearings are built on the inside of flanges.



CLAUD BUTLER, famous all over the world



**12 "C.B." Finishes** of the various types from which the customer is able to choose the "C.B." Silver remains the most popular, although with touring machines the "C.B." glass hard black is usually specified. Any colour enamels may be ordered including "C.B." special flamboyants in mauve, ruby, emerald, bronze, electric bronze, golden whyld, etc. The flamboyant process is similar to the "C.B." Silver except that the former has a dull plated undercoat.

**13 Chromium Plating** to all usual bright parts is now standard on all "C.B." machines. The crown front and rear fork ends of all machines are chromium plated without extra charge. Chromium plating by the "C.B." double deposition process is extremely durable and is guaranteed. Chromium plating, however, of course, is optional and all black may still be specified.

**14 Frame Sizes** should be calculated by inside leg measurement. It is often said that it is good to have as little of a bicycle as possible but when ordering path frames, or semi-upright designs nothing smaller than 20½" is recommended or advised.

**15 Road Racing.**—The models most popular and recommended are the "Road-Path," "All-Rounder" and "Ultra-Lite," all of which are extremely light and suitable for all distances.

**16 Touring Models.**—The most popular are the Supreme Sports, De Luxe Tourer, or the "Ultra-Lite" although all "C.B." machines are built especially for each customer to specification and are built for the purpose. Variable gears will be fitted to any machine.

**17 "C.B." Handlebar Stems.**—The majority of these are made on the premises and Chater-Lea lugs are fitted to most models as standard. They are extremely light and built of High Manganese tubing. Any stem however may be specified with any length adjustable extension.

**18 Gears.**—If the customer is doubtful, the experience of myself and staff are at his disposal, and we shall be glad to assist.

**19 Building to Order.**—Customers may specify any component parts, tubing or fittings, including "C.B." B.S.A. or Chater-Lea. Special instructions, providing they are practical, will be built up. Quotations by return. New items of interest are often placed on the market during the season and these can always be incorporated in new machines, if desired.

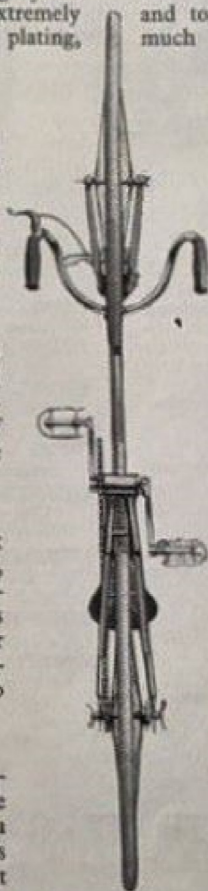
**20 Remember** you are the customer and I am here to be of service to you—special instructions will be carried out in detail and to your entire satisfaction—nothing is too much trouble in the "C.B." establishment. If however, you wish to seek the advice of myself or staff, you will at all times find us most helpful and courteous.

**21 Tandems** are a speciality. Skilled engineers concentrate on tandems only as with all sections of manufacture of "C.B." products. Any design frame can be built, although those listed are to be recommended, being the result of extensive research and practical demonstration.

**22 Goodwill.**—I consider this my most valuable asset. The "C.B." establishment has a reputation we are all proud of for straightforward and honest dealing. A dissatisfied customer will not be tolerated, complaints if ever will be dealt with generously, promptly and with courtesy.

**23 My Staff.**—Only the highest paid skilled engineers in the trade build "C.B." machines. None of my staff are ever "put off" nor on "short time," they are paid for all holidays including an annual holiday of 7 days on full pay.

**24 These Reliable machines** hold a pre-eminent position in the cycle world and are the outcome of a policy of quality before quantity, combined with the loyal and brilliant co-operation of an enthusiastic staff.



An unusual photograph, illustrating the rigidity of the C.B. Cycle.

**CLAUD BUTLER, famous all over the world**



## Page 6 Missing

**"C.A." ALL-ROUNDER MODEL**  
The most complete and practical bicycle ever made.



Price \$12.00

For a complete list of accessories and prices, see our advertisement in the "C.A." All-Rounder Model advertisement.

DAVID BROWN, Boston, Mass.

## Page 7 Missing

**"C.A." DE LUXE TOUCHER MODEL**  
The most complete and practical bicycle ever made.



Price \$12.00

For a complete list of accessories and prices, see our advertisement in the "C.A." De Luxe Toucher Model advertisement.

DAVID BROWN, Boston, Mass.



# LADY LIGHTWEIGHT (H.M.) MODEL

A "C.B." Open-frame Machine of rigid design—strength in the right places, but with lightness and easy running—(Vide "Cycling.")

An unusual design of particularly rigid type and pleasing in appearance.



A Lady's Machine with all the advantages of the Gent's diamond frame type.

WEIGHT INSIDE 26 lbs.

## FRAME :—

19, 20 and 21 in. Wheelbase 41 in. Bracket 10½ in. "C.B." specially designed suitable for both rational costume or skirts, absolutely rigid and comfortable. Built of H.M. butted tubing, including straight brazed up tapered seat and chain stays. Quick release front and rear frame ends with chain catch, pump pegs, etc., all brazed on.

## FORKS :—

"C.B." (H.M.) especially designed. Solid ends.

## WHEELS :—

26 × 1½ in. or 1¼ in. Endrick light steel rims, D/B spokes, D/Cog race hubs, fitted with Palmer Perfection covers and tubes (non-skid tread), or to order.

## SADDLE :—

Lycetts spring type, Terrys Club or Mansfield leather race or roadster pattern.

## HANDLEBARS :—

As illustrated or to order, on adjustable stem giving option of drop or raised bar.

## CHAIN :—

Coventry best roller, ½ × ½ in.

## PEDALS :—

Ladies steel race "Quill" type or rubber.

## BRAKES :—

Front and rear lightweight callipers (2 brakes), or to order—see footnote.

## GEARS :—

Reversible free and fixed.

## CRANKS :—

Lightweight 6½ in. with detachable 3-arm chain wheel.

## GUARDS :—

Bluemels full width, white finish celluloid, clip fitting, with brazed on eyes.

## EQUIPMENT :—

Bluemels reflector and inflator, Constrictor grips, tool bag and tools and detachable lamp bracket, including "C.B." force-feed oiler.

## FINISH :—

"C.B." Cambridge Blue with chrome plated crown, front and rear ends. "C.B." Silver, or to order.

**BRAMPTON FITTINGS £8-10-0 CASH**

Easy Terms :—12/6 deposit and 15 monthly payments of 11/9 each.

**"C.B." FITTINGS £10-0-0 CASH**

Easy Terms :—15/- deposit and 15 monthly payments of 13/9 each.

**CHATER-LEA FITTINGS £11-15-0 CASH**

Easy Terms :—16/3 deposit and 15 monthly payments of 16/3 each.

Note :—Flamboyant finishes, Brooks' Champion Saddles, Cantilever or hub brakes are only extra on Brampton fittings model.

**CLAUD BUTLER, famous all over the world**



# MISS MODERN (H.M.) MODEL

An advanced design Ladies' Bicycle with diamonded frame incorporating short top tube.

As used by Miss Hamilton in her demonstration ride covering over 1,000 miles in 7 days.



Especially shortened top tube, but retaining correct angles.

WEIGHT 24 lbs.

## FRAME :-

"C.B." special design, built of H.M. butted steel tubes with straight fine taper chain and seat stays brazed up, correct top tube giving ideal position for Lady. Short wheelbase, 10½ in. bracket. "C.B." especially manufactured lugs with serrated quick release frame ends. All refinements brazed on.

## FORKS :-

½ in. round or D/Rd. rake as illustrated, or to order.

## WHEELS :-

28 x 1½ in. Light Steel Endrick rims. D/B spokes. Double cog rear race hub.

## SADDLE :-

Brooks special spring seat, Lycetts or Terry Club, Mansfield leather race, or to order.

## HANDLEBARS :-

Any to order or as illustrated on adjustable stem.

## CHAIN :-

Coventry best, ½ x ¼ in.

## PEDALS :-

"C.B." Quill, or Rubber, to order.

## BRAKE :-

Rear or front Cantilever, or hub brake, Lightweight Calliper, or to order.

## GEARS :-

To order, 2 fixed cogs, reversible.

## CHAIN WHEEL :-

Single flange lightweight, 3 pin, with 6½ in. cranks.

## GUARDS :-

Blumels full width, White, detachable, with brazed eyes.

## FINISH :-

"C.B." popular Silver or any colour Enamel with chrome front and rear ends and crown.

## BRAMPTON FITTINGS **£8-10-0** CASH

Easy Terms :-12/6 deposit and 15 monthly payments of 11/9 each.

## "C.B." FITTINGS **£10-0-0** CASH

Easy Terms :-15/- deposit and 15 monthly payments of 13/9 each.

## CHATER-LEA FITTINGS **£11-15-0** CASH

Easy Terms :-16/3 deposit and 15 monthly payments of 16/3 each.

Note :-Flamboyant finishes, Brooks Champion Saddle, Cantilever or hub brake is extra only on Brampton fittings model.

**CLAUD BUTLER, famous all over the world**



# SUPREME SPORTS (H.M.) MODEL

A lively fast clubman's machine especially built entirely to customer's own specification of "C.B." fittings, also in B.S.A. or Chater-Lea fittings, if desired.

Variable gearing suitable for touring England and abroad will be built into this model as with any other.

Multiple gears by the following makers recommended:—Sturmev Archer, Cyclo, Tri-Velox, & Osgear.



WEIGHT 25 lbs.

## FRAME :—

Special design, sizes to order, wheelbase 42 ins., bracket height 10½ ins., or special to suit individual and conditions, built throughout with Reynolds "H.M." or High Tensile butted steel tubes, straight tapered seat and chain stays brazed up. "C.B." forward opening quick release frame ends or special "C.B." ends to suit type of variable gears ordered (if any). All lugs beautifully machined, unique cut-away design. All refinements brazed to frame.

## FORKS :—

Design to order or as illustrated in D to Rd. or ½ in. Round section, or Reynolds Super Resilient. Solid brazed up quick release ends. Taper gauge butted tubing.

## WHEELS :—

26 in. Endrick or Westwood steel rims, D/C hubs, locked cones, D/B black spokes.

## TYRES :—

Dunlop Road Racing, Palmer or to order.

## SADDLE :—

Brooks B.18 or 17 Champion, Terrys C.T.C. or Lycetts duralumin "Aero" elastic, or any to order.

## HANDLEBARS :—

Any to order, chrome or celluloid finish on adjustable stem.

## CHAIN :—

Renolds "Elite" or to order.

## PEDALS :—

B.O.A. or to order.

## CHAIN WHEEL and CRANKS :—

Special light 6½ in. cranks and flanged detachable chain ring.

## GUARDS :—

Bluemels "Noweight" finish to order, detachable clip or strap fixing with wing nuts—brazed eyelets.

## BRAKE :—

Front or rear Lightweight Calliper, Cantilever "A," internal expanding hub brake or any to order.

## LUBRICATION :—

"C.B." Twin force feed oiling system throughout, oilgun and instructions provided.

## EQUIPMENT :—

Bluemels reflector and inflator, Shockstop or Constrictor grips, and tools including detachable and adjusting fork blade lamp bracket (boss brazed to frame).

## FINISH :—

All Black throughout or all Black frame with chromium plating to usual bright parts or Black or coloured enamels with chrome plated crown, front and rear frame ends, etc., or "C.B." Silver or Flamboyant finishes, no extra charge.

"C.B." FITTINGS **£10-0-0** CASH

Easy Terms :—13/9 deposit and 15 monthly payments of 13/9 each.

CHATER-LEA or B.S.A. FITTINGS **£11-17-6** CASH

Easy Terms :—16/- deposit and 15 monthly payments of 16/6 each.

See extras on page 26 for variable gears (incorporating "C.B." improved brazed on attachments).

**CLAUD BUTLER, famous all over the world**

# ANGLO-CONTINENTAL (H.M.) MODEL

A true "stayer" machine of Continental design with head and seat out of parallel, built on semi-upright lines.

An entirely new design frame built from "C.B." specially manufactured lugs, thus avoiding "pulling."

**WEIGHT AS SPECIFIED** 24 lbs.

## FRAME —

"C.B." special design —with "steep" head built of special "C.B." lugs, beautifully finished and unique cut-away, light in weight, whilst actually increasing strength. High Manganese taper butted tubes throughout, "C.B." design straight tapered chain stays and full long taper seat stays, solid brazed up, drop-out ends. All refinements brazed on. Sizes to order, short wheelbase, forward opening serrated drop-out frame ends, quick release front ends.

## FORKS —

1 in. round or D Rd., as illustrated or 2 in. abrupt offset recommended on ROAD model.

## WHEELS —

26 x 1½ in. light steel Endrick rims, D/B spokes, "C.B." light steel hubs, double cog rear.

## TYRES —

Dunlop Sprite or to order.



Used by the Six-day heads, including the new English pro, Jack Torry, and Frank Bartell (American).

*Note.*—Frame sizes of not less than 20½ in. recommended on upright designs.

## PEDALS —

B.O.A. or solid centre race.

## SADDLE —

Special "Ormond" duralumin on straight H.M. light seat pin.

## BRAKE —

Front lightweight special caliper — bolt crown type.

## CRANKS —

Special lightweight 6½ in. with detachable lightweight single flange 3-pin chain wheel, ½ x 1 in.

## HANDLEBARS —

17 in. "C.B." shallow Highgate on "C.B." stem, or any to order. Major-Taylor Sliding Extension.

## EQUIPMENT —

Bluemels reflector and inflator, tool bag and tools, force-feed oiling with gun and instructions included.

## FINISH —

"C.B." famous Silver (recommended), or any to order, with chrome plated crown front and rear fork ends.

**"C.B." FITTINGS £10 - 17 - 6 CASH**

Easy Terms —16/- deposit and 15 monthly payments of 16/- each.

Torry-Continental Model fitted with sprints.

26 or 27 in. "C.B." Continental, Constrictor, or Tabucchi wood rims and Constrictor, Tabucchi or Dunlop (File or Smooth band) tubulars (less steels and guards).

**"C.B." FITTINGS £12 - 7 - 6 CASH**

Easy Terms —20/- deposit and 15 monthly payments of 17/4 each.

*Note.*—Primarily used and designed for London's Six-day Race, during which the riders covered some thousands of miles. This machine with the adoption of the "C.B." new severe "offset" front forks makes the "Anglo-Continental" an ideal machine for road racing at all distances.

**CLAUD BUTLER, famous all over the world**



# SUPER TAPER TUBE MODEL

A Lightweight Taper Tube Model, suitable for general purposes, road racing or fast club work.

Special design, Tapered Down and Seat tubes with parallel top tube.

Appealing to those who prefer larger diameter tubes at the bottom bracket



WEIGHT 24 lbs.

## FRAME :-

Special design, sizes to order, Short wheelbase, low bracket, built of Taper gauge High Tensile steel tubes, and parallel top tube. Special taper seat and chain stays brazed up, "C.B." forward opening frame ends, usual "C.B." refinements brazed on. Front forks—D/Rd. or 1 in. Round section, taper butted, solid ends.

## WHEELS :-

28 x 1 1/2 in. light steel Endrick rims, "C.B." chrome hubs, D/Cog rear, locked cones, D/B spokes.

## TYRES :-

Dunlop or Palmer Trans. road racing or to order.

## CRANKS :-

6 1/2 ins. light steel flanged chain wheel, 3-pin or 5-pin, detachable.

## SADDLE :-

Brooks Champion series, Mansfield Ormond, Lycetts "Aero," or to order.

## HANDLEBARS :-

Any to order—"C.B." adjustable stem 1 in., 2 in. or 3 in. extension, finish to order.

## PEDALS :-

B.O.A. or solid centre racing.

## CHAIN :-

"Elite" or Renolds.

## BRAKE :-

Front or rear, resilient cantilever "A," Lightweight Calliper or to order.

## GUARDS :-

Bluemels "Noweight," clip, detachable with fly nuts and brazed-on lugs, finish to order.

## EQUIPMENT :-

Bluemels reflector and 15 x 1/2 in. inflator, twin force feed lubrication with oilgun, Shockstop grips, tool bag and tools.

## LUBRICATION :-

"C.B." Twin force feed throughout—oilgun and instructions provided.

## FINISH :-

"C.B." new "Goldonsilver" (Gold finish on Silver undercoat). The famous Silver or any shade of Flamboyant or Black or coloured enamels—"C.B." chrome plating to Crown, front and rear ends.

"C.B." FITTINGS **£11 - 7 - 6 CASH**

Easy Terms —16/- deposit and 15 monthly payments of 16/- each.

Super Taper Tube Sprint Model, Constrictor Sprint Wheels and Tubular Tyres less Guards and Steels **£12 - 7 - 6 CASH**

Easy Terms —17/3 deposit and 15 monthly payments of 17/3 each.

**CLAUD BUTLER, famous all over the world**

# SILVER ARROW (H.M.) MODEL

And now a famous individually built "C.B." Real Lightweight, reduced in price to within the reach of all who are about to seriously take up "cycling" for pleasure—what the "Old Timer" would call the "right idea."

1935 Model now built with H.M. butted tubing

Not mass produced—built to an ideal



WEIGHT 27 lbs.

## FRAME

Special design, size to order, 19, 20, 21 or 22 ins. Wheelbase 42½ ins. Bracket height 10½ ins., built of Reynolds "H.M." butted tubes and unique design cut-away lugs, straight tapered and brazed up seat and chain stays, D to R front fork "C.B." solid drop-out quick release frame and fork ends, mudguard eyes, reflector boss, pump pegs, chain catch, and fork blade lamp bracket, all brazed to frame.

## WHEELS

26 x 1¼ in. Endrick flat sided rims, "B.W." chrome race hubs, fitted locked cones, double cog rear, D/B spokes, Palmer Super Speed Trans. tyres.

## SADDLE

Special Mansfield (B.17 patt.) recommended, or Lycetts "Aero."

## HANDLEBARS

Original "C.B." as illustrated 15 x 3¼ ins. shallow drop-on patent curved or straight stem, fitted Shockstop sponge rubber grips.

## PEDALS

Lightweight steel race.

## BRAKE

Improved type Lightweight bolt on front or rear waterproof cable.

## CHAIN

Renolds roller ¼ x ½ in.

## CHAIN WHEEL and CRANKS

3-pin fixing detachable 40t. chain wheel, 11¼ ins. cranks, rear sprockets 14t. and 18t., giving two reversible gears of 66 and 74 ins., or to order.

## MUDGUARDS

Bluemels full width white or black, detachable clip fitting, with wing nuts—brazed-on eyelets.

## EQUIPMENT

Celluloid pump, reflector, tool bag and tools with oiler complete.

## LUBRICATION

"C.B." force feed with oilgun and instructions provided.

## FINISH

"C.B." Silver recommended or to order with chrome plated front and rear frame ends and crown, including usual chrome bright parts. "C.B." Flamboyant finishes 15/- extra on this model.

**CASH PRICE £7 - 17 - 6**

Easy Terms—10/- deposit and 15 monthly payments of 11/2 each.

The specification of this model cannot be varied except at extra charge, the components listed above having been especially purchased at special price for this model only, thus enabling me to produce an **individually built high-class Lightweight** at a price to compete against the mass production firms—The "Silver Arrow" will appeal to those with limited cash who want to commence "Real" cycling with the "right idea"—on a "Real" Lightweight.

**CLAUD BUTLER, famous all over the world**



# EAST HILL (H.M.) MODEL

A high-class Lightweight Road Racing or Club machine built to specification at a modest price.

Built to usual design—  
not "C.B." Semi-upright.

New type front fork blade  
with 2 in. abrupt offset.



WEIGHT from 20 lb.

## FRAME —

Size to order, 42 in. wheelbase, 19½ in. bracket, built with Reynolds High Magnesium button steel tubes, Brampton fittings, "C.B." design cut-away and beautifully filed lugs. Braided-up tapered straight seat and chain stays. Solid quick release fork ends. Mudguard eyes, pump pegs, chain rest, reflector boss, and fork blade lamp bracket (adjustable) brazed on.

## FORKS —

Special design, Reynolds "H.M." tapered straight with 2 in. abrupt offset at tip. D. to Rd. or ½ in. round tapered.

## WHEELS —

Double Cog Race hubs with locked cones chrome plated, best black D-B spokes, "C.B." wood rims; lined with Dunlop, Yabuuchi or Constructor Tubular racing tyres.

## SADDLE —

Manfield Duramin Ormond, or to order.

## HANDLEBARS —

"C.B." shallow, level grip, Highgate chrome or celluloid covered 15 in. or 17 in. on hangers adjustable stem.

## CHAIN —

Coveney "Ellis" or Reynolds ½ in. x ½ in. pitch.

## PEDALS —

Light steel racing.

## BRAKE —

Lightweight front or rear bolt fixing, waterproof cable.

## CHAIN WHEEL and CRANKS —

3-arm fixing, flanged detachable chain ring, with 9½ in. cranks. Special lightened steel.

## LUBRICATION —

"C.B." three feed oiling system to head and all parts.

## EQUIPMENT —

Oil gun and instructions, tool bag and tools, reflector and pump.

## FINISH —

"C.B." Silver recommended, or any to order, including chrome plated crown, front and rear frame ends no extra if desired.

**SUPER BRAMPTON FITTINGS £10.10.0 CASH**

Easy Terms —14/6 deposit and 15 monthly payments of 14/6 each.

"East Hill" model fitted with steel wheels — 26 x 1½ in. Endrick rims, and Dunlop "Sprite" wired-on tyres, including Blumharts Mudguards in place of "Sprite" and "Tobular." Super Brampton fittings.

**£8.17.6**

Cash price

Easy Terms —12/3 deposit and 15 monthly payments of 12/4 each.

---

**CLAUD BUTLER, famous all over the world**





## ROAD RECORD TRICYCLE (H.M.) MODEL



The 1,000 Metres Tricycle Championship was won in 1932, 1933 and 1934 on this actual model.

### FRAME >—

Special "C.B." design, short wheelbase, low bracket, 30½ in. axle (28 in. axle 12/6 extra), built of "C.B." fittings and H.M. bent or tapered tubes, "C.B." forks, ½ in. rd. or D.Rd., or to order.

### WHEELS >—

Constructor best wood rims fitted with Constructor tubulars, or to order, "C.B." light steel special hubs. Alloy rims as illustrated extra.

### BRAKE >—

Cam-lever or to order.

### SADDLE >—

Brooks Champion Series, or to order.

### LUBRICATION >—

Force feed direct.

### FINISH >—

"C.B." Silver recommended, or any to order.

**PRICE £18 - 18 - 0 CASH**

Easy Terms >—26/- deposit and 15 payments of 26/- each.

## DE-LUXE 3-SPEED TRICYCLE (H.M.) MODEL

Specification as illustrated with light steel rims, Dunlop road tyres, Brooks saddle, etc., including "C.B." 3-speed Gear.

**PRICES FROM £21 - 0 - 0 CASH**

Easy Terms Arranged.

Quotations for any Specification.

(Rear hub brake ½ extra).

Note patent rear wheel mudguard fittings.



The first practical 3-speed lightweight Touring Tricycle.

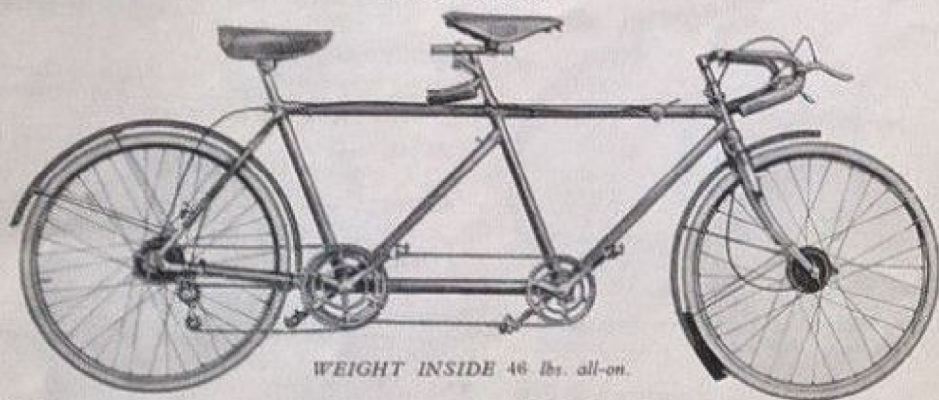
Ask **CLAUD BUTLER** to quote you——

for any design or specification, Single Bicycle, Tricycle, Tandem Tricycle, Triplet, Family Tandem with Sidecar, Pace followers, etc. Experts in frame construction and designing for all purposes.

**CLAUD BUTLER, famous all over the world**

# SILVER ACE (H.M.) TANDEM

The "Silver Arrow's" big brother . . . and now an individually built real lightweight tandem by Claud Butler at a modest cash price or on easier easy terms now enabling all to realize the great pleasure of tandem riding. . . Real tandem riding on a Real Lightweight tandem by a specialized Lightweight Maker.



WEIGHT INSIDE 46 lbs. all-on.

## FRAME :-

"C.B." design Double Diamond as illustrated, sizes 21 in. front, 20½ in. rear (recommended), suitable for lady or gent rear partner, short wheel-base, built with Reynolds High Manganese tubes and special design fittings, unique design cut-away lugs, brazed-up solid seat and chain stays and quick release frame ends, all "C.B." refinements brazed on.

## FORKS :-

Special taper gauge reinforced as illustrated solid drop-out ends.

## WHEELS :-

26x1½ in. heavy gauge chrome plated black centres, Endrick rims or to order. Special tandem spokes, built on to improved type internal expanding hub brakes front and rear, chrome plated or ebony black finish. Rod-cum-Cable.

## TYRES :-

Dunlop Non-Skid tandem.

## BRAKES :-

Two internal expanding hub type—see wheels. Resilion Cantilever "A" rim brakes with solid reversible race hubs 10/- extra, or one hub type and one rim brake 5/- extra.

## SADDLES :-

Lycetts "Aero" or Mansfield B.17 pattern, or to order.

## CHAINS :-

Renolds roller ¼ x ½ ins.

## PEDALS :-

Universal steel or rubber.

## HANDLEBARS :-

As illustrated or any to order chrome or celluloid covered, on adjustable reinforced stems. Shock-stop sponge rubber grips.

## GEARS :-

Free or fixed to order.

## GUARDS :-

Bluemels full width—brazed lugs, detachable "C.B." quick release fittings (white or black).

## EQUIPMENT :-

Bluemels inflator and reflector, oilgun and tools and tool bag.

## LUBRICATION :-

"C.B." force feed to brackets and head (instructions provided).

## FINISH :-

"C.B." famous Silver, or best Black or Coloured enamels with chrome plated crown, front and rear frame ends, or all Black frame with chrome bright parts, or all Black throughout, if desired. ("C.B." Flamboyant finished 15/- extra)

**CASH PRICE £15 . 0 . 0** Specification as above.

Easy Terms :-20/- deposit and 15 monthly payments of 21/- each.

**3-SPEED MODEL £16 . 10 . 0 CASH PRICE**

Either Tri-Velox or Cyclo Derailleur or Sturmey Archer Tandem Hub gears (including "C.B." quick release wheels with brazed-on refinements).

Easy Terms :-25/- deposit and 15 monthly payments of 23/- each.

("C.B." Lady-back open frame 10/- extra, design as Lady Lightweight).

**CLAUD BUTLER, famous all over the world**



# SUPER CLUB (H.M.) TANDEM

Built to an ideal—not down to a price. A comfortable Touring machine, rigid, responsive, and fast on hills with perfect steering at all speeds in addition to positive braking to both wheels.



WEIGHT from 45 lbs.

## FRAME :—

Sizes to order, short wheelbase, 10½ in. bracket, special design built of Reynolds "H.M." special gauge tubing, Brampton fittings, unique cut-away to lugs—beautifully finished. Reynolds "H.M." taper gauge front forks. Quick release frame ends, solid brazed up and all "C.B." brazed on refinements.

## WHEELS :—

26 × 1½ in. Endrick or Westwood rims tandem gauge, best heavy gauge spokes built on to super internal expanding Hub brakes to both wheels—direct operated.

## TYRES :—

Dunlop Non-Skid tandem or to order, with tandem tubes.

## BRAKES :—

Two internal expanding type incorporated in hubs, "Rod-cum-Cable" operated, see "Wheels," or to order, rim brakes no extra.

## SADDLES :—

Terrys Club (all spring type), Brooks or Mansfield to order.

## CHAINS :—

Renolds or Coventry ½ × ¼ ins. roller.

## PEDALS :—

Steel race or rubber, to order.

## HANDLEBARS :—

"C.B." 17 in. × 3¼ in. drop front, N.R.D. rear on reversible clips, or any shape to order, chrome or celluloid finish.

## HANDLEBAR STEM :—

"C.B." solid brazed up—adjustable own make.

## GEARS :—

3-speeds, ratio to order, Cyclo or Tri-Velox or Sturmey Archer, brazed on attachments, "C.B." quick release to wheels.

## MUDGUARDS :—

Bluemels full width—brazed lugs—detachable "C.B." fittings.

## LUBRICATION :—

"C.B." twin force feed to brackets and head, etc., oilgun and instructions provided.

## EQUIPMENT :—

Bluemels reflector and inflator, oilgun, tool bag and tools.

## FINISH :—

Any to order, including "C.B." Silver recommended or Golden finish—"C.B." Chrome plated bright parts, front and rear frame ends and crown. All Black finish if desired. ("C.B." Flamboyant process 12/- extra).

## BRAMPTON FITTINGS

3-speed model

£18.6.0

## CASH

Specification as above.

Easy Terms :—26/- deposit and 15 monthly payments of 26/- each.

## BRAMPTON FITTINGS

Single Speed Model

£16.16.0

## CASH

Less 3-speed gear.

Easy Terms :—23/- deposit and 15 monthly payments of 23/8 each.

Ladies to-day usually ride this Double Gent's design, but special "open" design Lady-back frame will be built at 7/6 extra.

CLAUD BUTLER, famous all over the world

# RECORD OLYMPIC (H.M.) MODEL

The "Record Olympic" Model was first built and used successfully in the Olympic Games (America 1932) since on each occasion it has won the London Centre Tandem Championship. The "Record Olympic" Model is used by England's foremost riders, including D. S. Horn, E. H. Chambers, W. Harvell, S. Chambers, A. R. M. Harbour, etc.

Claud Butler was the first to build and introduce tandems built throughout with High Manganese butted steel tubes.

"C.B." leads—others follow



WEIGHT from 41 lbs.

## FRAME

Specially designed, size to order, short wheel-base, built throughout with "H.M." butted steel tubing of special gauges. Double Diamond design or Central tube style, straight or cross-over drive. Narrow chain line, straight tapered and brazed up seat and chain stays, oval to round front forks of taper butted gauge or Reynolds New Super Resilient. "C.B." forward opening quick release solid frame and fork ends. "C.B." brazed-on refinements.

## WHEELS

28 x 1 1/2 in. or 1 1/4 in. Endrick or Westwood special gauge steel rims, best D/B tandem spokes, Double or Single cog race hubs, locked cones, loose washer wing nuts.

## TYRES

Dunlop or Palmer, or to order. Non-Skid tread.

## SADDLES

Brooks B.17/N, or any Champion Series or Terrys, or Lycetts Spring Seats.

## CHAINS

"Elite" or Reynolds or Coventry.

## HANDLEBARS

Any to order, or as illustrated adjustable, Celluloid or Chrome finish.

## HANDLEBAR STEM

"C.B." own make "H.M." adjustable, extension to order.

## PEDALS

B.O.A. or Solid Centre Racing.

## GUARDS

"Noweight" Bluemels full width—brazed lugs, "C.B." detachable fittings. (White or Black).

## BRAKES

Front and rear Cantilever "A" or any to order, or Hub brakes front and rear, or any combinations desired, finish optional.

## GEARS

Single or Double cog—if rim brakes are specified. (3-speed gears Cyclo, Tri-Velox, or Sturmey Archer, at extra charge).

## EQUIPMENT

Bluemels inflator, reflector, tool bag and tools, oilgun and instructions.

## FINISH

"C.B." Silver or Golden, any shade "Glass Hard" enamels, "C.B." Flamboyants in Mauve, Ruby, Emerald, Royal, Bronze, Electric Bronze, etc., no extra including "C.B." chrome plating to front and rear ends and crown.

CHATER LEA FITTINGS £20.0.0 CASH

"C.B." FITTINGS £18.18.0 CASH

SUPER BRAMPTON FITTINGS £17.17.0 CASH

Easy Terms:—28/9 deposit and 15 monthly payments of 27/9 each.

Easy Terms:—26/3 deposit and 15 monthly payments of 26/3 each.

Easy Terms:—25/- deposit and 15 monthly payments of 25/- each.

The "Record Olympic" model in Brampton fittings can only be built into trapped chain stay bridge and 1 1/2 in. C.L. with wheelbase from 5 ft. 5 in., but can be had in double diamond or central bar design with C.O or Straight drive.

CLAUD BUTLER, famous all over the world



# SUPER-FAST TOURER (H.M.) MODEL

The "Ultra-Lite" of the Tandem world—A Super Machine for the connoisseur—the experienced rider that will have the best. Light in weight yet extremely strong, rigid and responsive with perfectly balanced steering at all speeds.

Any choice of specification built regardless of cost.



Double diamond or central tube design frame, straight or cross-over drive, built to order.

## FRAME

Built throughout with Reynolds special gauge High Manganese butted frame tubes and Chater-Lea Super fittings throughout, rigid brazed-up straight tapered chain and seat stays, solid drop-out serrated rear ends. All lugs beautifully filed and cut-away in "C.B." unique design. Brazed-on refinements, sizes to order, short wheelbase, rigid brackets. Double Diamond or central bar frame design, cross-over or straight drive.

## FORKS

Reynolds "H.M." taper butted gauge tubing—oval to round or Super Resilient, butted steering stem, solid ends.

## WHEELS

26 ins. special tandem gauge Endrick or Westwood rims, Chater-Lea disc adjusting race hubs (patent), single or double cog, best S.B. spokes, special heavy gauge.

## TYRES

Dunlop Fort or any to order.

## SADDLES

Brooks Champion series, Ormond Duralumin or Terrys C.T.C., or Lycetts Duralumin "H.M." seat posts.

## HANDLEBARS

"H.M." "C.B." Shallow Level grip Highgate 17 in. front, Shallow "H.M." rear or any to order. Chrome or Celluloid finish or to order.

## HANDLEBAR STEM

"C.B." own make "H.M." adjustable.

## CHAINS

"Elite" roller  $\frac{1}{2} \times \frac{1}{4}$  in. or to order.

## PEDALS

Chater-Lea solid centre race or to order.

## BRAKES

Front and rear Resilion Cantilever best quality, chrome finish, or any type of brakes optional to order.

## CHAIN WHEELS

Chater-Lea detachable with  $6\frac{1}{2}$  in. cranks special light pattern, chrome plated.

## GUARDS

Bluemels "Nowright" detachable, brazed eyes, "C.B." detachable fittings.

## LUBRICATION

"C.B." twin force feed to head and brackets, hubs, etc., oilgun and instructions free.

## EQUIPMENT

Bluemels reflector and inflator, oilgun, tool bag and tools, Shockstop or Constrictor grips.

## FINISH

Finest obtainable, any to order with "C.B." chrome plated crown, front and rear frame ends and usual bright parts.

CHATER-LEA FITTINGS **£22 - 2 - 0 CASH**

Easy Terms—40/- deposit and 15 monthly payments of 30/- each.

CLAUD BUTLER, *famous all over the world*





# EXTRAS

The following items are extra when not listed in the specifications of models illustrated herewith.

	£	s.	d.		£	s.	d.
Cycle frame and fork, Chrome plated all over ("C.B." process)	2	0	0	Sturmev Archer T.F. 2-speed hub with fixed gear	1	0	0
Tandem frame and fork, Chrome plated all over ("C.B." process)	3	0	0	Sturmev Archer T.F. 2-speed hub with free wheel	1	0	0
Cycle front fork, Chrome plated all over ("C.B." process)	5	0		Sturmev Archer T.F.B. 2-speed with internal expanding hub brake combined free or fixed wheel	1	6	0
Tandem front fork, Chrome plated all over ("C.B." process)	7	6		Sturmev Archer K.S.W. medium ratio 3-speed hub	1	6	0
(The above extras have been arrived at after deducting cost of chrome to front and rear frame ends which is included in all "C.B." specifications—"C.B." chrome plating is guaranteed).				(10.8 per cent. increase from normal to high and 14.3 per cent. decrease from normal to bottom). Any of the Sturmev Archer hubs can now be supplied suitable for Tandems).			
Cycle frame built of Super Taper Tubes	5	0		Tri-Velox 3-speed chain gear (Derailleur direct gears)	1	10	0
Alloy rims (Constrictor or Tabucchi) Sprint or Road	1	10	0	Tri-Velox 3-speed chain gear with hub brake combined	2	0	6
Alloy Seat Pillar	2	6		Cyclo 3-speed chain gear (Derailleur type)	1	7	6
Alloy "C.B." (B.O.A. pattern) Pedals	10	6		Cyclo 2-speed chain gear (Derailleur type)	1	2	6
Alloy "C.B." Handlebar bend ("C.B." 15 in. x 3 1/2 in. only)	7	6		Cyclo 4-speed chain gear (Derailleur type)	1	18	6
"C.B." "H.M." Handlebar bend (all shapes) special gauge	5	0		For other multiple Cyclo gearing attachments write for special "Cyclo" list.			
"C.B." "H.M." Handlebar stem, own make cut-away	7	6		Witny 2-speed gear (Cyclo)	1	0	0
Free Wheels (all sizes)	2	6		All above extras are for cycle or tandem and include usual "C.B." brazed-on attachments, special quick release connections, wing nuts and special "C.B." fork ends where necessary.			
Duralumin Chain Wheel	10	6		Super Cyclo Duralumin parts with above—per set	5	6	
"C.B." Alloy wing nuts (per set of 4)	6	6		Additional Cantilever "A" brake, Black or Chrome (waterproof)	10	6	
Cantilever "A" Brake instead of Lightweight Calliper on "Silver Arrow" model	7	6		Additional Lightweight Calliper, Black or Chrome (waterproof)	5	6	
Brooks, Terrys or Ormond Saddle on "Silver Arrow" model	7	6		Additional Lightweight Pellissier, Black or Chrome (waterproof)	6	0	
Internal expanding Hub Brake instead of rim Brake on "Silver Arrow" model	10	0		Additional Hub Brake (cycle), Black or Chrome (waterproof)	12	6	
Ditto instead of rim Brake on other models	5	0		Additional Hub Brake (tandem), Black or Chrome (waterproof)	15	6	
Sturmev Archer K. 3-speed hub	1	0	0				
Ditto K.B. with internal expanding hub brake combined	1	6	0				
Sturmev Archer K.S. close ratio 3-speed hub	1	6	0				

Huge stocks of all cyclists' equipment such as touring bags, shoes, cycling suits, oilskin clothing, sprint wheels, tyres, complete racing outfits—tights, alpacas, shorts, etc., are carried at Wandsworth and Lewisham Sales Depots. Inspection invited, no obligation to purchase.

**REMEMBER—I build to your specification:** place your confidence in **Claud Butler**, the recognised "KING" of Lightweights—You will not be disappointed.

**CLAUD BUTLER, famous all over the world**

## P27 Missing





# PROOF OF CLAUD BUTLER SUPERIORITY

Claud Butler Successes are well known to the public and again brief list of 1934 race wins by riders of "C.B." Cycles and Tandems are published proving beyond doubt the superiority of Claud Butler Super Cycles, Tandems and Tricycles.

## HERNE HILL.

March 1933.—  
2nd—550 yds. Sprint.  
**GRAVESEND.**  
April 2nd.—  
1st and 2nd—5-mile Scr.

## HERNE HILL.

May 8th.—  
2nd—1-mile Pt. to Pt.  
1st.—284 yds. Scr.

## DEERY.

May 15th.—  
2nd—1-mile Pt. to Pt.  
**BIRMINGHAM.**  
May 18th.—

## CHICHESTER.

May 21st.—  
1st and 2nd and 3rd—1,000 yds. Scr.  
1st and 2nd—3-mile Scr.  
1st—1-mile SUSSEX CHAMPIONSHIP.  
1st—2-mile SUSSEX CHAMPIONSHIP.

## NORWICH.

May 21st.—  
1st and 2nd—KING'S CUP SCR.  
Race, WON FOR THE FOURTH YEAR IN SUCCESSION. A RECORD FOR ONE MAKE OF BICYCLE.  
1st.—3-mile Scr.

## WOKING.

May 21st.—  
1st—5-mile Open Scr.

## COVENTRY.

May 22nd.—  
1st—JORDISON BOWL Scr. Race  
WON OUTFRIGHT ON A "C.B."  
1st—DUNLOP CUP Race WON  
OUTRIGHT ON A "C.B."

## DUBLIN.

May 28th.—  
2nd—1-mile Scr.

## BIRMINGHAM.

May 28th.—  
1st—1-mile NATIONAL GRASS  
CHAMPIONSHIP.  
2nd—500 yds. Scr.

## PERRY BARR.

May 28th.—  
1st—5-mile for HALFORDS CUP,  
WON OUTFRIGHT.

## READING.

May 30th.—  
1st—1-mile Scr.

## HERNE HILL.

June 2nd.—  
2nd—GRAND PRIX OF LONDON.

## COPENHAGEN.

June 8th.—  
1st—6-laps Scr.  
1st—6-laps Scr.  
1st—INTERNATIONAL Scr.

## EASTLEIGH.

June 8th.—  
1st—1-mile Open Scr.  
**COPENHAGEN, DENMARK.**  
June 10th.—

## COPENHAGEN.

June 10th.—  
2nd—GRAND PRIX OF COPENHAGEN.  
2nd—3 kilometre.  
1st—8-laps Scr.

## THE KING'S CUP

The only Trophy presented by His Majesty the King for Cycle racing has been won for four years in succession by a Claud Butler.

## WORLD'S CHAMPIONSHIPS

For four years in succession Claud Butler Cycles have been used by representatives of this country. DENMARK 1931, ITALY 1932, FRANCE 1933, GERMANY 1934.

## OLYMPIC GAMES

Claud Butler Cycles and Tandems were used in the Olympic Games held in America and the "C.B." Tandem was 2nd in the Tandem events (the only British built Tandem).

## AMERICA

Claud Butler Cycles and Tandems lead the way even in America. Frank Bartell the popular American pro. riding his "C.B. Anglo Continental" Model won the Detroit Six Day Bicycle Race.

## SOUTH AFRICA

Again in South Africa Claud Butler sweeps the board, winning numerous South African Championships in addition to numerous first-class scratch races.

Leon Meredith Trophy has been won only on a Claud Butler 1931-2-3-4. Winners of the best All-Rounder Track Trophy.

The above is definitely only a brief list of successes. Road records and road trials are for reasons well known to clubmen omitted.

CLAUD BUTLER THE SUPER 100% LIGHTWEIGHTS

## HANTS POLICE SPORTS.

June 9th.—  
1st—1-mile SOUTHEAMPTON  
CENTRE CHAMPIONSHIP.  
1st—5-mile SOUTHEAMPTON  
CENTRE CHAMPIONSHIP.

## COPENHAGEN, DENMARK.

June 12th.—  
2nd—1-lap Handicap.  
1st—6-laps Scr.  
1st—9-laps Scr.

## DORCHESTER.

June 19th.—  
1st—1-mile CENTRE CHAMPIONSHIP.  
1st—1-mile Handicap.  
1st—1-mile Handicap.

## GUILDFORD.

1st—5-mile CLUB CHAMPIONSHIP.  
2nd—1-mile Scr.  
1st—INVITATION SPRINT MATCHES.

## TROWBRIDGE.

June 16th.—  
1st—1-mile Scr.  
1st—1-mile Scr.

## DARLINGTON.

June 20th.—  
1st—1,000 yds. Scr.  
1st—5-mile Scr.

## LUTON.

June 30th.—  
2nd—5-mile Scr.

## NORWICH.

June 27th.—  
1st—1,000 yds. CHAMPIONSHIP.  
1st and 2nd—1,000 yds. EASTERN  
COUNTIES CHAMPIONSHIP.  
1st and 2nd—5-mile CLUB CHAMPIONSHIP.

## PIONSHIRE.

1st and 2nd—1 lap Scr.  
1st—2-mile Pursuit Match

## PADDINGTON.

June 28th.—  
1st—3-mile CHAMPIONSHIP FOR  
LORD ELGIN CUP, WON OUTFRIGHT.

## BRISTOL.

June 30th.—  
2nd—5-mile Scr.

## DERBY.

June 30th.—  
1st—1-mile NATIONAL CHAMPIONSHIP.  
2nd—1-mile Scr.

## GLASGOW.

July 2nd.—  
1st—1-mile Invitation Handicap.  
2nd—2-mile Invitation Handicap.  
1st—1,000 yds. Scr.

## BOURNEMOUTH.

July 4th.—  
1st—1-mile Handicap.  
1st—5-mile Pt. to Pt.

## HERNE HILL.

July 15th.—  
1st—1,000 yds. Scr. for DUNLOP  
CUP.  
**AVLESBURY.**  
July 15th.—

## 1st—1-mile Scr.

## BRISTOL.

July 25th.—  
1st and 2nd—1-mile Scr.  
1st and 2nd—5-mile Scr.  
2nd—5 laps INTERNATIONAL  
MATCH RACE.

## GLASGOW.

July 25th.—  
2nd—1-mile POLICE CHAMPIONSHIP.  
1st—1-mile POLICE CHAMPIONSHIP.

## GUILDFORD.

July 11th.—  
1st—H. C. TEAM of  
CHARLOTTVILLE C.C.  
1-mile GRASS TRACK RECORD  
ON A "C.B."

## MANCHESTER.

July 14th.—  
2nd—1,000 yds. NATIONAL  
CHAMPIONSHIP.

## PORTSMOUTH.

July 18th.—  
1st—1-mile Scr.  
2nd—1 lap Handicap.

## RUGBY.

July 21st.—  
1st and 2nd—500 yds. Scr.  
1st—3-mile GRASS CHAMPIONSHIP.

## IPSWICH.

July 28th.—  
1st—2-mile Scr.

## POOLE SPORTS.

July 25th.—  
1st—March Race.  
1st—1-mile Pt. to Pt.

## BICESTER.

August 6th.—  
1st—Devil Take Hindmost.

## ELY.

August 6th.—  
1st, 2nd and 3rd—EASTERN  
COUNTIES CHAMPIONSHIP.  
1st and 2nd—1-mile for CITY OF  
ELY CUP.

## WATERBURY.

August 8th.—  
1st, 2nd and 3rd—1-mile Scr.

## HERNE HILL.

August 15th.—  
1st—550 yds. for DANISH CUP.  
1st and 2nd—50 lap MADISON  
RACE.  
1st—INVITATION ITALIAN  
PURSUIT.

## HERNE HILL.

August 15th.—  
1st—550 yds. Scr.  
1st—15 laps Course-de-Birmes.

## SHOREHAM.

August 25th.—  
1st and 2nd—1-mile Scr. for RADIO  
CUP.  
1st—1-mile Scr. for WHITE CUP.

## POOLE.

August 25th.—  
1st—March Race.  
1st—10-mile CLUB CHAMPIONSHIP.

## GRANTHAM.

August 28th.—  
1st—1-mile Scr.