

Claudio Butter.

1967



Most Popular 'Claud' ever

FITTED WITH

Italia head fittings
G.B. alloy stem
G.B. Maes alloy bends
Regina freewheel
Lytard pedals
Renold $\frac{3}{32}$ " chain
18" alloy pump
Brooks B5 perforated saddle
Williams C34 chainset with $6\frac{3}{4}$ "
fluted cranks
Steel 27" H.P. rims on S.F. racing
hubs
Dunlop 27" Sprite amber walled
tyres
Bluemels Classique black guards
with chrome strip

Sizes

21 $\frac{1}{2}$ " , 22 $\frac{1}{2}$ " , 23 $\frac{1}{2}$ "

CAMPAGNOLO



*now in its
sixth year*

CLASSIQUE

WORLD'S BEST—UNIVERSAL '61' Centre Pull BRAKE

HIGH PERFORMANCE

FRAME DESIGNED

FOR GENERAL USE

AND HAND BUILT WITH

REYNOLDS '531' TUBING

CONTINENTAL LUGS

AND INCORPORATING

USUAL BRAKE AND

GEAR EYES, TUNNEL,

LAMP BRACKET, etc.

FINISHES

No. 1.—Classic silver and black finish is offset by the bold black, yellow and red colours of Belgium in a twelve-inch seat tube panel and complete head tube. Top of fork crown coloured in contrast.

No. 2.—Turquoise Blue Flamboyant finish, with complete head tube in triple red, white and black repeated to long seat panel and top of fork crown.

Both finishes are set off by red blocks on the down tube. The famous "Classique" black guards by Bluemels have a polished chrome strip down the centre matching the polished alloy pump and chrome plated accessories.

GRAN SPORT

FIVE SPEED

£33 19 6d.

Recommended price

Including P. Tax.

CORDON BLEU

Designed from the experience of Leading British and Continental massed start exponents.

Constructed throughout from '531' double-buttet tubing and Continental Nervex 72° parallel lugs. Neatly finished seat cluster, rigid ends and round-oval-round chain stays give a solid back, balanced by a low bottom bracket. Finely tapered oval blades are set into a sturdy fork crown.

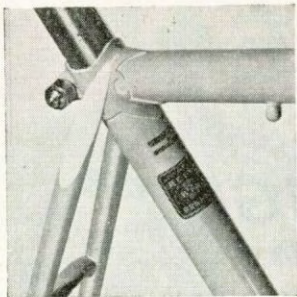
All usual brake and gear cable eyes, but NO pump pegs or lamp bracket boss are fitted. A special stop under the down tube acts as anchor to the lever and allows any make gear to be fitted.

£13 15 0d.

WITH CAMPAGNOLO ENDS

£14 15 0d.

FRAME SIZE TO ORDER



FINISH. Any colour Flamboyant, Lustre or Enamel to choice. Top-eyes, crown and lug profiles carefully picked out by hand and contrasting bands on seat tube. Metal headplate and transfer Crest with script signature plus Model name on top tube complete a really smart, first class frame.





gearing by
Simplex
PRESTIGE

ELECTRON

SUPER FIVE

*With Weinmann '999'
or G.B. '66'
positive 'centre-pull' braking*

27" High Pressure wheels. Williams chainset.
Dunlop Sprite or Michelin High Speed tyres.
G.B. Alloy Maes bends on solid forged stem.
Lyotard 462 pedals. Simplex freewheel.
Brooks B5 perforated flap saddle.

JADE GREEN lustre
White contrasts with Olympic bands

TANGERINE enamel
Black and White contrast panels

FIVE SPEED CYCLE
SIZES
19 $\frac{1}{2}$ " , 21" , 22" , 23" , 24"

Recommended price
£28 19 6d.

Including P. Tax.

REYNOLDS 531

OLYMPIC

*A pair of top class frames covering all aspects of the sport.
Each especially designed for super performance.*

ROAD

HAND BUILT for

FINISH. Any colour Flamboyant, Lustre or Enamel to choice, with contrast bands to head and seat tube or lugs lined. Metal Headplate and full set of transfers.

POSITIVE HANDLING

ROAD-SPRINT

Built of Reynolds '531' tubing brazed into Continental steel 73° parallel lugs, this frame has a rigid rear triangle incorporating C.B. long-slot path ends which allow for large gear variations without alteration of chain length. Strong round blades are set into a solid cast fork crown drilled for a shallow brake. No lamp boss, pump-pegs or cable eyes are fitted for a "clean" track "iron". SIZE TO ORDER

A responsive frame of Reynolds 531 built into attractively cut Continental lugs of 72° parallel design. Ideal for general road use with brazed on brake eyes and pump pegs below top tube, lamp bracket and gear stops. Gently raked oval blades give balanced steering and comfort.

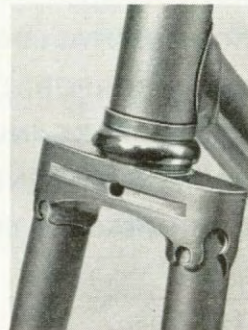
SIZES 21½" 22½" 23½"

EX WORKS

£9 19 6d.

EX WORKS

£10 10 0d.





*introducing another
especially designed*

REYNOLDS '531' FRAME

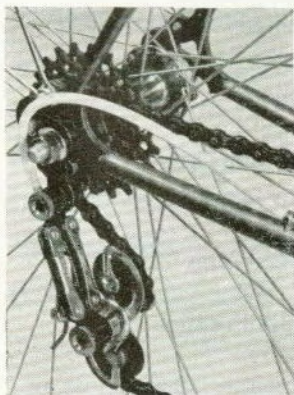
27" High Pressure Wheels
Large Flange alloy hubs
Williams C34 chainset with fluted
 $6\frac{3}{4}$ " cranks and detachable $\frac{3}{32}$ " ring
Lyotard single sided pedals
G.B. Alloy bend in 'Metric' alloy stem
Brooks B.5. perforated flap saddle
Bluemels Classique, with chrome strip or
Weinmann Stainless Racing guards.

FRAME SIZES

21 $\frac{1}{2}$ " 22 $\frac{1}{2}$ " 23 $\frac{1}{2}$ "

SAPPHIRE

'Claud' thoroughbred for 1967



finished in
brilliant

WHITE ENAMEL

SAPPHIRE FLAMBOYANT panels

Choice of 3/32" derailleur gears

Italian

CAMPAGNOLO VALENTINO

or

French

SIMPLEX PRESTIGE

Centre-Pull Brakes

G.B. '66' or Weinmann '999'

FIVE SPEED

ONLY

£32 10 0d.

Including P. Tax.

A. SHACKLETON & SONS
BICYCLES, MOTORBIKES, TOYS
SERVICE, ACCESSORIES & SPARES
2 & 4 Church St. (off Market Place)
MACCLESFIELD, Cheshire

SPECTRA



**Huret
SVELTO
Gear**

G.B. Synchron unique action brakes

G.B. Alloy Maes bends on forged stem. Brooks B5 perforated flap saddle. Dunlop or Michelin 27 $\frac{1}{4}$ " tyres. Williams $\frac{3}{2}$ " c/set and Renold chain. Lyotard pedals. 18" alloy pump. Deep sectioned plastic mudguards.

**ELECTRIC BLUE Flamboyant
White and Black head and seat contrasts.**

**CANARY YELLOW Enamel with White
and Brunswick Green contrast bands.**

**FIVE SPEED CYCLE
SIZES 19 $\frac{1}{2}$ " 21" 22" 23" 24"**

Recommended price

£26 19 6d.

Including P. Tax.



SUPER COUREUR

Weinmann '999' or G.B. '66'
smooth acting centre pull brakes

27 $\frac{1}{4}$ " Steel High Pressure wheels. Brooks B5 saddle with perf. flaps. Regina $\frac{3}{32}$ " multiple freewheel. Williams 48T x $\frac{3}{32}$ " chainset. G.B. Alloy Maes bends and stem. Coloured guards to suit finish.

MOSS GREEN Flamboyant with Red, White and Black contrast on seat and down tube.

BRIGHT RED Flamboyant with White and Black contrasts on seat and down tube.

FIVE SPEED CYCLE
SIZES 19 $\frac{1}{2}$ " 21" 22" 23" 24"

Recommended price

£30 19 6d.

Including P. Tax.

**Gran
Sport
CAMPAGNOLO
Gear**



EUROPEAN

CAMPAGNOLO

Gran Sport gears

FIAMME alloy

High Pressure rims

DUNLOP Road Racing

High Pressure tyres

REMAINDER OF SPECIFICATION AS SUPER EUROPEAN

FIVE SPEED

TEN SPEED

£39 19 6d. £42 19 6d.

Recommended prices including P. Tax.

SIZES

21½" 22½" 23½"



EUROPEAN CYCLES-----

*being a well balanced combination
of equipment from the leading Con-
tinental specialists, offer*

-----**UNSURPASSED VALUE**

CAMPAGNOLO	Gran Sport alloy quick release hubs
BROOKS	B 17N. saddle or any of range
UNIVERSAL	Centre pull alloy quick release brakes
LYOTARD	15S single sided pedals
G.B.	'Ventoux' $\frac{1}{8}$ " alloy bends
G.B.	Metric Solid forged alloy stem
REGINA	Five speed freewheel
WILLIAMS	C34 chainset $6\frac{3}{4}$ " fluted cranks

Sizes

21 $\frac{1}{2}$ " - 22 $\frac{1}{2}$ " - 23 $\frac{1}{2}$ "

FINISHED ANY COLOUR TO CHOICE

SUPER EUROPEAN

Claud's TOP VALUE LIGHTWEIGHT

HAND BUILT OF RESPONSIVE '531' TUBING TO PROVEN DESIGN. 72° PARALLEL PRUGNAT LUGS WITH BALANCED FORK RAKE, LONG BACK AND MEDIUM BRACKET HEIGHT FOR MAXIMUM ROAD HOLDING.

To complete this ensemble PAR EXCELLENCE the Super European is fitted with

the worlds finest gears



RECORD

FIAMME *Sprint Rims*

KOWALIT *Kadett Tubulars*

FIVE SPEED

£42 19 6d.

TEN SPEED

£46 19 6d.

Recommended prices Including P. Tax.

Italian Styled

TORINO

Road Frame

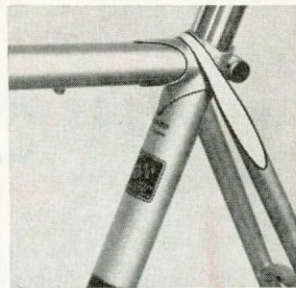
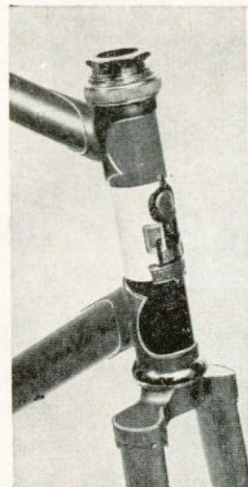
Reynolds '531' Butted Tubing Throughout

Hand built with neatly finished long spearpoint Italian lugs, this frame follows the modern trend. The $\frac{5}{8}$ " seat stays are fully wrapped over with long chamfer at the seat cluster and combine with Campagnolo forged drop-outs in $17\frac{1}{2}$ " chain stays to give an extremely rigid rear triangle. Nicely tapered fork blades are mounted in the classic sloping Italian crown and Campag. front ends. Designed for use with multiple gears combined with maximum stability and road-holding characteristics. The usual gear and brake cable eyes are fitted, together with down tube lever stop but NO lamp boss or pump-pegs are provided.

Flamboyant, Lustre or Enamel to choice. Head tube in contrasting colour to match single or split panel on seat tube. Top-eyes, crown and lug profiles carefully picked out by hand. Metal head-plate, transfer crest, name and the model transfers complete a well-finished frame.

FRAME SIZE TO ORDER

EX WORKS
£14 19 6d.



**FINISH ANY COLOUR
TO CHOICE**

Long recognised as 'King of the Lightweights' -----

C.B. frames are hand built and finished on our premises to standards which maintain their well earned prestige.

C.B. FRAMES

ALL PROUDLY
CARRY THE
HEAD PLATE
FEATURING
OLYMPIC RINGS
IN HONOUR OF
THE MEDALS
WON ON
CLAUD BUTLER
FRAMES



AS FITTED TO MODELS

Hand built with carefully mitred tubes brazed into Continental high grade steel lugs. Slender tipped oval blades and butted steering column as featured in all C.B. road forks.

Front and rear fork-ends incorporate mudguard eyes. Brazed-on cable stops, pump-pegs and lamp bracket boss ensure "tidy" efficiency.

21" frames are built with 21 $\frac{1}{4}$ " top tubes, larger sizes with 22 $\frac{1}{2}$ ".

- SUPER—
COUREUR
- ELECTRON
- SPECTRA

SIZES

21" 22" 23" 24"

19 $\frac{3}{4}$ " FRAMES ARE MADE WITH CLEARANCE FOR 26" WHEELS ONLY.

FRAME ONLY

£8 10. 0.

EX WORKS

Claud Butler
Regd Trade Mark

COSTING. The competitive price of the models listed does not allow any departure from the standard specification. The right is reserved to adjust prices if necessary and substitute fitments of similar value when shortages would otherwise delay delivery.

GET THE MOST OUT OF YOUR NEW CYCLE

C. T. C.

Cyclists Touring Club
Cotterell House,
69, Meadrow,
Godalming, Surrey.

TOURING

JOIN ONE OF THE
NATIONAL BODIES

FOR A SOCIAL
CLUB LIFE
AND INSURANCE

WHEN RIDING

B. C. F.

British Cycling
Federation
26, Park Crescent,
London, W.1

RACING

Guarantee

We give the following guarantee with all cycles of our manufacture instead of any guarantee implied by statute or otherwise.

"WE GUARANTEE that all cycles or frames and forks are built in our own workshops."

"WE GUARANTEE all frames and forks against defective workmanship and materials, excluding fair wear and tear, misuse, accident or neglect, for a period of 12 months from date of purchase, confined to replacement or repair, free of charge, of any such parts found defective during this period." The period of this guarantee is in accordance with the terms agreed by the British Cycle Manufacturers Union and does not apply to second-hand cycles, or where alterations or repairs have been made by other firms; nor does it apply to specialities of other manufacturers, such as tyres, saddles, stems, brakes, hubs, chains, etc., since these are usually guaranteed by the respective makers. Taking delivery denotes acceptance of this guarantee in its entirety.

C.B. CYCLES, LONDON, S.E.20

