

IDEALS

*are realised
with a
"GRUBB"
Bicycle!*



1st ~~Ed~~⁴ - Late 32/Early 33

Nov 1932.

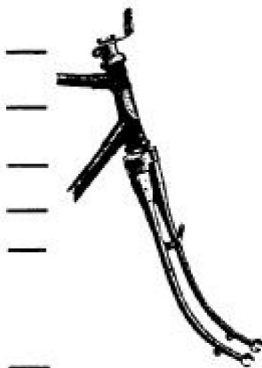
List of 1933 Models

The mount *SUPREME* for speedmen!

MY new "London Model" is a pedigree machine of exceedingly smart appearance, with every component carefully selected to give you the best possible service.

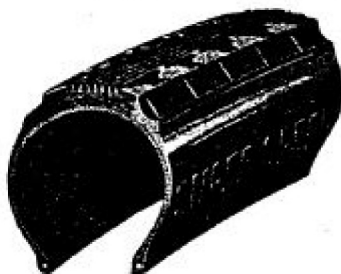
Note the special features of the Steering Head and Front Forks!

- (a) The Head Clip with its substantial locking-nut gives perfect adjustment of the bearings.
- (b) A stronger Steering Column—budded at the crown with thick walls at the top—obviating risk of fracture in any part of its length.
- (c) The top and bottom Head Lugs are machined after brazing—the hardened frame races fitting in perfect alignment. No tight and loose points in the steering.
- (d) The gracefully tapered Fork Blades give maximum strength with minimum weight. Their resilience damps out road-shocks—adding considerably to comfort.
- (e) The fork Lamp Bracket is readily adjustable or can be quickly removed if desired.
- (f) The Fork Ends are drop forgings of great strength yet extremely light. The slots provide easy wheel removal.



PALMER SUPER SPEED TYRES.

Tyres that are really fast, yet give the mileage of the best roadsters. Built with a wonderful fabric and a safe tread—there's nothing to touch them for fast Club work.



PALMER NEW LIGHTWEIGHT FLAT-SIDED RIMS.

Is several ounces lighter than a standard rim yet has astonishing strength and will stand the heaviest rider. Nickel plated in my own works.

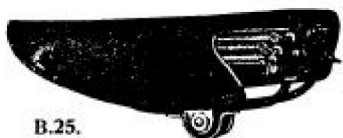




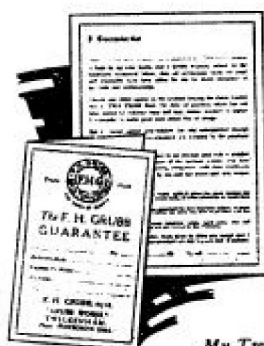
B.17.

BROOKS' SADDLE

Here is a choice of two—
each the best in its class.



B.25.



*My Two-Year
Guarantee
is given with
every Machine*

All previous Lists Cancelled.

**The F. H. Grubb Catalogue of
Racing and Touring Lightweight
Cycles, Tandems and Tricycles,
. . . . 1933**

Works:

**GOULD ROAD,
TWICKENHAM GREEN,
MIDDLESEX**

Phones: Popesgrove 2220-2221

Business Hours—

8 till 8; Wednesdays, 8 till 6.

London Depot:

**ROBSART STREET,
BRIXTON, S.W.9**

(Opposite "White Horse")

Phone: Brixton 3284.

Business Hours—

8 till 8; Wednesdays, 8 till 1.

INDEX

	Page		Page
Cross Frame Tandem ...	10	Race Tandem ...	8 & 9
Frames	15	Racing Tricycle ...	13
Gear Ratios	16	Richmond Model...	6
Guarantee	Back Cover	Special Touring Model...	3
Home Trainer 3rd Page Cover		Speed Model	7
Lady's Twickenham Model 5		SuperTwickenham Model	4
Light Roadster	11	Terms of Business ...	16
List of Extras	14	Twickenham Model ...	4
Path Racing Model ...	12		



Price has been the last consideration in building and equipping this Machine, in the construction of which I have used nothing that I do not know to be the very best in either material or workmanship.

As a rider myself, who cannot be regarded as lacking experience, I offer my personal assurance that the new "London Model" is as perfect as I can imagine a Cycle to be.

Let the Specification speak for itself.

J. H. Grubb

The New **GRUBB** *LONDON MODEL*



Everything
of the best—
regardless
of cost

THE NEW GRUBB "LONDON MODEL"

Full Specification

FRAME BUILT THROUGHOUT OF CHROME MOLYBDENUM STEEL TUBING IN USUAL SIZES 19", 20", 21", 22", with Accles' and Pollock's Patent Tapered Front Fork Blades. Braised on pump pegs, mudguard eyes, chain rest, reflector eye, etc., with Grubb forward-opening quick release. Bracket height 10½" with 42" wheelbase.

And every Frame is Guaranteed Perfectly True.

PALMER NEW LIGHTWEIGHT
RIMS, 26" x 1½" or 1¾".
PALMER NEW SUPER SPEED
TYRES.
BRAMPTON SUPERB HUBS
D. Cogged Rear. Locked Cones.
GRUBB WING NUTS to both wheels.
GEARS—Two fixed, 71, 67,
or to order.
6½" or 7" lightweight 3-arm Cranks
and Chain Wheel.
CONSTRUCTOR BOA RACE
PEDALS

CONSTRUCTOR VIPER FRONT
OR REAR BRAKE.
CURVED HANDLEBAR STEM, or
to order, with 15" Marsh Bend.
SHOCKSTOP No. 20 Handlegrips.
Renold Chain, ½" x ½".
Bluemel's Celluloid or Wasdell's.
"Osolite" Mudguards with front
extension.
Brooks' B17 Champion or
Brooks' S25 Racer.
Bluemel's Sterling Pump and
Prismatic Reflector.
Tool Wallet and Spanners.

FINISH—Frame rust-proofed by Coslett Patent process and stove enamelled DARK GREEN (or black to order). Front forks nickel plated (on copper) all over. Rims—nickel plated, green centres and all usual bright parts heavily nickel plated.

Hire Purchase

Terms:

16/4

Deposit

Price:

£9:10:0 Each

Carriage Paid to nearest
Railway Station.

and 12

monthly

payments of

16/4

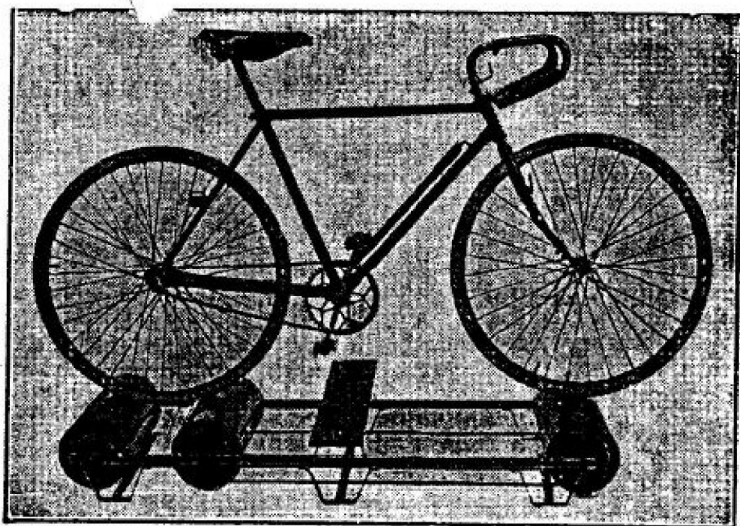
"IT'S EASIER ON A GRUBB."

**TWICKENHAM
MIDDLESEX**

F. H. GRUBB
M. J. I. E.

and at
**BRIXTON
LONDON**

THE FAMOUS F. H. GRUBB HOME TRAINER



Adjustable to various wheel-bases. Ball bearings.

Very quiet running. You can mount and dismount without assistance. Convenient in use.

Stoved black and beautifully finished.

Not a toy, but a practical aid to the expert.

Sent carriage paid to anywhere in Great Britain.

£3 - 15 - 0 cash, or deposit of 7/6 and
11 monthly payments of 7/6

We can supply these Home Trainers in pairs, coupled together with recording dial for competitions. Particulars on request.

I Guarantee that
 is built in my own works, and I hereby warrant, subject to the conditions mentioned below, that all precautions which are usual and reasonable have been taken by me to secure excellence of materials and workmanship.

SHOULD any defect appear in the machine bearing the above number within two years from the date of purchase, which has not been caused by ordinary wear and tear, misuse, accident or neglect, I undertake to make good such defect free of charge.

BUT I cannot accept any responsibility for any consequential damage or expense and the goods concerned are accepted by the purchaser on this understanding.

ANY defective part must be sent to me carriage paid with a detailed complaint giving full particulars of the machine number and the date of purchase as shown. Failing compliance with these conditions no claim will be entertained by me, and any goods sent will remain here at owner's risk.

THIS guarantee does not apply where the above machine has been let out on hire, sold to a second party, or where alterations or repairs have been made by other firms.

TYRES, other than racing tyres, are guaranteed by their respective makers, to whom all complaints should be made, stating my name and date of purchase, with full particulars of complaint.

SADDLES, adjustable handlebar stems, handlebar bends, speed gears, rims and specialities of other manufacture are not covered by this Guarantee.

I RESERVE the right to alter from time to time any detail that I may consider to be an improvement on my Cycles and Tandems.