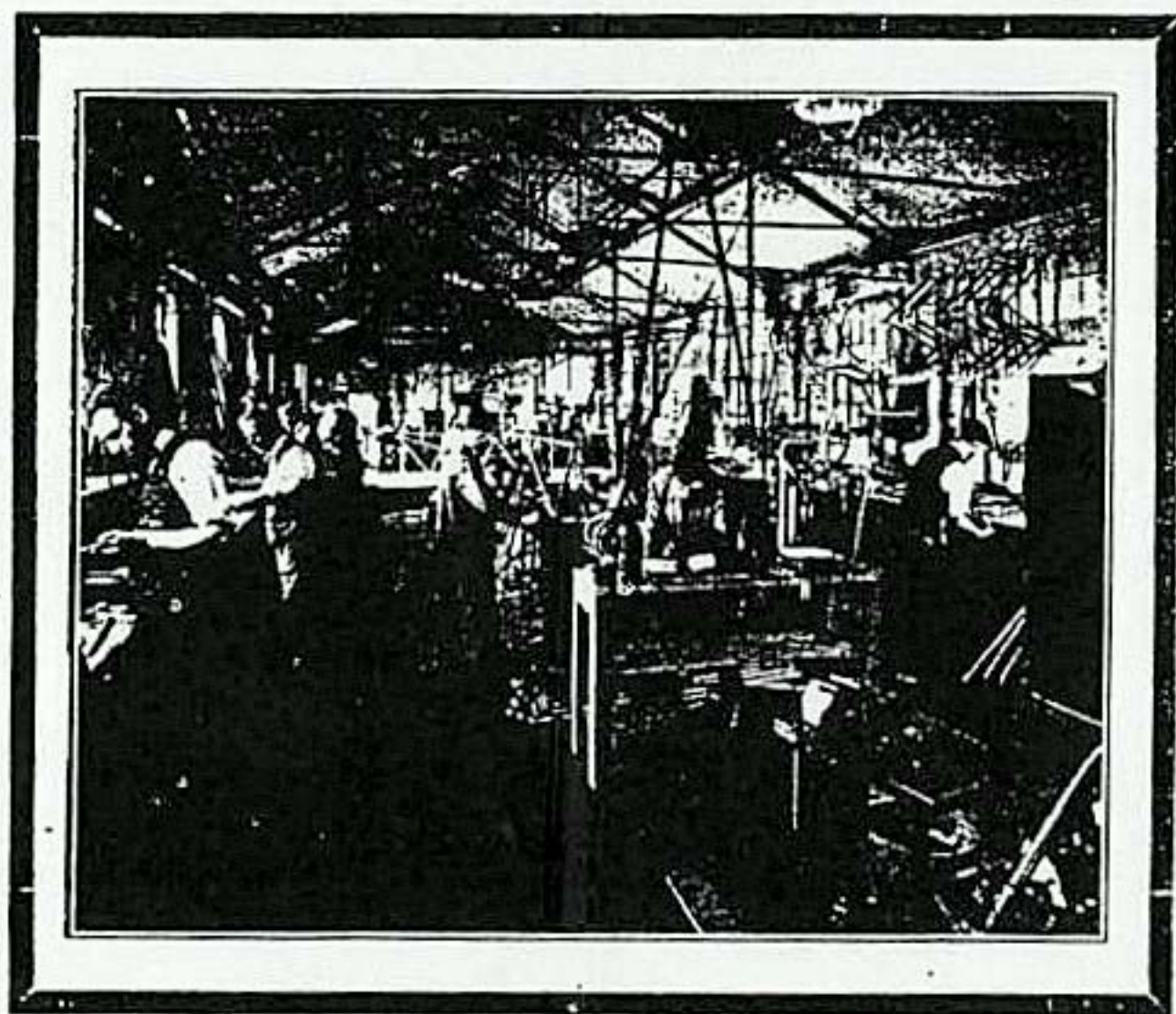


WE present this Cycle
and Tandem
Catalogue with
every confidence in our
products. We express our
sincere thanks to the many
enthusiastic cyclists who
have favoured us with
recommendations to their
friends, and assure them
that the Quality and Work-
manship which has built up
the "Grubb" Reputation
will be maintained at all
costs.



A Section of the Grubb Works,
Frame Building Shop.

Special Touring Model.



£11 - 10

Any Model can be supplied
on Hire Purchase Terms.

Frame size to order, built with Aircraft Tubes and Grubb Fittings.* Brazed-on brake parts, special front fork lamp bracket, etc. Dunlop Westwood rims, 26 x 1 $\frac{1}{4}$ or 1 $\frac{3}{8}$ in., on Grubb hubs. Tyres: Constrictor No. 3 or Fort Dunlop. Gears to order—one fixed, one free. Special fluted cranks, 6 $\frac{1}{2}$, 6 $\frac{3}{4}$ or 7 in. Solid centre rat-trap pedals, Coventry Elite chain, celluloid covered bars to order in adjustable clip. Constrictor sponge grips.

Saddle: Brooks B.17c, S.20 Racer or Terry C. T.C. Bluemel's No-weight guards with extension, McMillan patent front and rear brakes, Bluemel pump and prismatic reflector, Brooks' tool bag, tools, front and rear wing nuts, grease gun with screw feed and flexible connection and supply of grease. Coslettized and enamelled all black with gold head.

This model can also be supplied with Endrick rims and Constrictor Cobra brakes. Approx. weight, 28 $\frac{1}{2}$ lbs.

* Incorporating grease gun lubrication.

"Unstinted in Finish and Specification."

Twickenham Model.



£8-0-0

Deferred Terms arranged with
The Grubb Finance Co., Ltd.

£1 Deposit and 12 Monthly Payments of 13/-

Frame. 19, 20, 21, 22 or 23in. Grubb forward opening quick release. 10½in. bracket height. 42½in wheelbase. Brampton fittings, Front forks of "A" quality butted steel blades, reinforced, solid slotted ends. Brazed on pump pegs, chain hook, mudguard eyes and special front fork lamp bracket. Frame coslettized and enamelled black only. Crown and tips of front fork plated. 26 x 1½in. black Endrick rims, Palmer, Dunlop, or Constrictor speed tyres, double cogged hub, fixed gears, 70 and 66. Brampton chain. Brooks B.18 Champion saddle. Bluemel's Lightweight guards with front extension. Marsh handlebars on curved stem with Constrictor long sponge grips. Pelissier front or rear brake. Rear reflector. Bluemel's "Sterling" pump. Tool wallet and tools. Approx. weight, 27lbs.

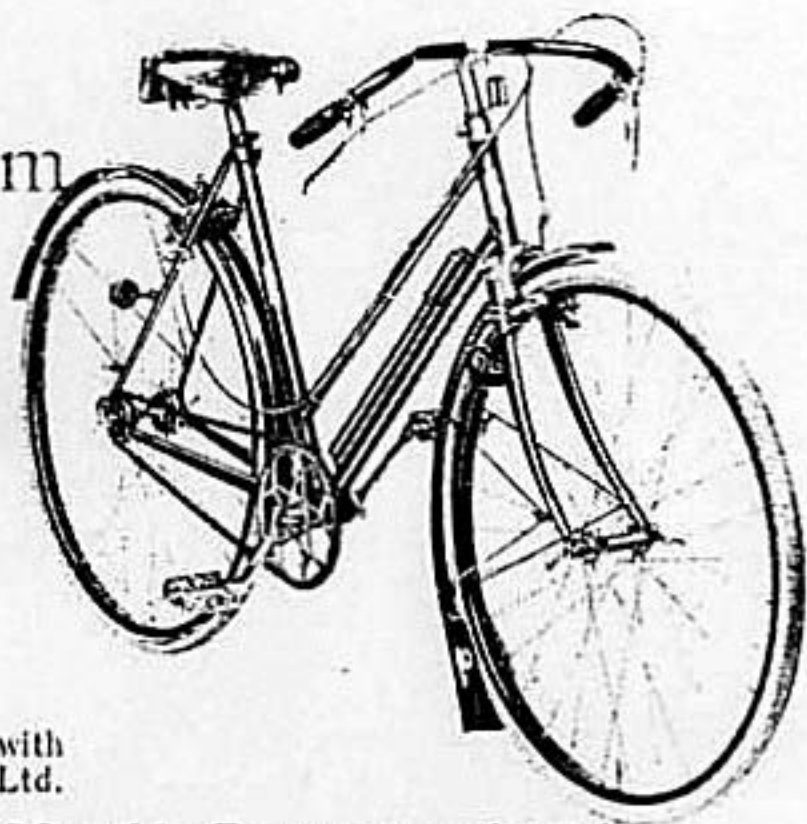
The Super Twickenham.

Specification as above, but built with Aircraft tubing. Frame and forks coslettized, and enamelled black only. Chromium plated head and bracket, hubs, gear wheel, cranks, pedals, handlebar stem, wing nuts, seat pillar and brake. Celluloid covered handlebars, B.17 saddle and Constrictor Cobra brake (front or rear).

£9-10-0 Deferred Terms, £1 deposit and 12
Monthly Payments of 15'9

The Pioneer of the Club

Lady's Twickenham Model.



£8-0-0

Deferred Terms arranged with
The Grubb Finance Co., Ltd.

£1 Deposit and 12 Monthly Payments of 13/-

Frame, 19, 20, 21 or 22in. 10½in. bracket height. 42in. wheel base. Coslettized and enamelled black. Brampton fittings. Front forks of "A" quality butted steel blades, reinforced, with solid slotted ends, crown and tips plated. Brazed-on mudguard eyes, pump pegs, chain hook, special front fork lamp bracket and reflector eye. 26 x 1½in. black Endrick rims; Palmer Speed, Dunlop or Constrictor road racing tyres; double-gear hub with 66 fixed and 63 free gears. Brampton chain. Race pedals, Brooks' B 18 lady's saddle. Bluemel's lightweight guards with front extension. 16in. North Road drop handlebars, stoved black, with rubber grips, in adjustable stem. Front and rear Pelissier brakes. Rear reflector. Wing nuts, front and rear. Bluemel's "Sterling" pump. Tool wallet and tools. Approx. weight, 27½ lbs.

Lady's Sports Model.

Specification as above, but built with Aircraft tubing. Constrictor No. 3, Dunlop or Palmer Roadster tyres. Coventry Elite chain. Brooks' B.10 or Terry saddle. Cobra cable brakes or roller lever brakes on North Road or flat handlebars.

Grubb Fittings, with grease gun lubrication...	£11	15	0
B.S.A. Fittings
Chater-Lea Fittings

Grubb Patented system of grease gun lubrication with B.S.A., Chater-Lea or Brampton fittings 10/- extra.

Any Model can be supplied on Hire Purchase Terms.

Bicycle at Eight Pounds.

Richmond Model.



£8-15-0

Deferred Terms arranged with
The Grubb Finance Co., Ltd.

£1 Deposit and 12 Monthly Payments of 14/4

Frame sizes, 19, 20, 21, 22 or 23in., with Grubb forward opening quick release. Brampton fittings. Brazed-on mudguard eyes, reflector eye, brake guides, pump pegs and special front fork lamp bracket. 26 x 1½ or 1¾in. Dunlop rims and Dunlop, Palmer Roadster or Red Road Racing tyres. Gears, 67 fixed and 63 free, or to order. Cranks, 6½in. Brampton "Dapta" pedals. Brampton chain.

Flat handlebars as illustrated or to order with Constrictor grips. Brooks' B.18 Gent's or Champion saddle. McMillan Patent Brakes, front and rear. Bluemel's No-weight guards with front extension. Bluemel's "Sterling" pump and prismatic reflector. Tool wallet and tools.

Finish: rustproofed by "Coslett" process and enamelled all black, or with usual nickel plated parts.

Comfort with Speed

Speed

Model



Frame size to order, built with Aircraft Tubes and Grubb quick release. Wheels, 26 or 27in., flat Bastide or round reinforced rims. Butted spokes, double cog hubs with fixed gears to order. Tyres, Constrictor No. 3 or No. 50 Tubulars. Cranks, 6½ or 7in. Pedals, race or rat-trap, 3½, 3¼ or 4in. Chain, Coventry Elite. Saddle, B.17c. Grubb wing nuts, front and rear. Handlebars to order with adjustable clip. Constrictor short or long sponge handlebar grips. Tool bag and tools. Pump, Bluemel's "Sterling." Finish, enamelled in wide choice of colours.

Grubb Fittings, with grease gun lubrication and Sprints	£11 15 0
(With steels, No.3 Meredith or Englebert Amber Covers, £10 5s. 0d.)	
B.S.A. Fittings and Sprints	£11 15 0
(With steels and No.3 Covers, etc., £10 5s. 0d.)	
Chater-Lea Fittings and Sprints	£11 10 0
(With steels and No. 3 Covers, etc., £10)	
Brampton Fittings and Sprints, with Python Tubulars and Brampton chain	£9 5 0
Brampton Fittings and Steels with Python Speed, Dunlop Red Road Racing, Palmer or John Bull Speed Covers and Brampton Chain	£7 15 0

Grubb Patented Grease Gun Lubrication with B.S.A.,
Chater-Lea or Brampton Fittings, 10/- extra.

Any Model can be supplied on Hire Purchase Terms.

and Speed with Comfort

Race Tandem.

Frame sizes to order, with Grubb quick release. Frame and forks built of finest quality steel tubing. 26 x 1½in, or 1¼in. Dunlop Westwood or Endrick rims. Internal expanding front and rear hub brakes, with brazed-on quick release attachments, or tandem front hub, double cog rear with one fixed and one free wheel, and Constrictor tandem front and rear callipers. Gears to order. Dunlop, Palmer Roadster or Ivory Cord tyres.

Cranks, 6½in. or 7in. to order. Coventry Elite chains. Race pedals.



Handlebars to order in adjustable clips, with Constrictor long sponge grips. Brooks' B.17 Champion, B.18c or B.66c saddles. Bluemel's No-weight mudguards with extension and stays fitted to brazed-on eyes. Bluemel's "Sterling" pump fitted to brazed-on pegs. Brooks' tool wallet and two spanners. Grubb wing nuts front and rear. Finish—plated crown and tips of front forks, frame coslettized and enamelled four coats best black enamel (or all black finish if desired). Approx. weight, 49 lbs

Brampton Fittings	-	5	-	£16	:	16	:	0
Chater-Lea Fittings	-	-	-	£18	:	18	:	0

Grubb Patented Grease Gun Lubrication, 15/- extra.

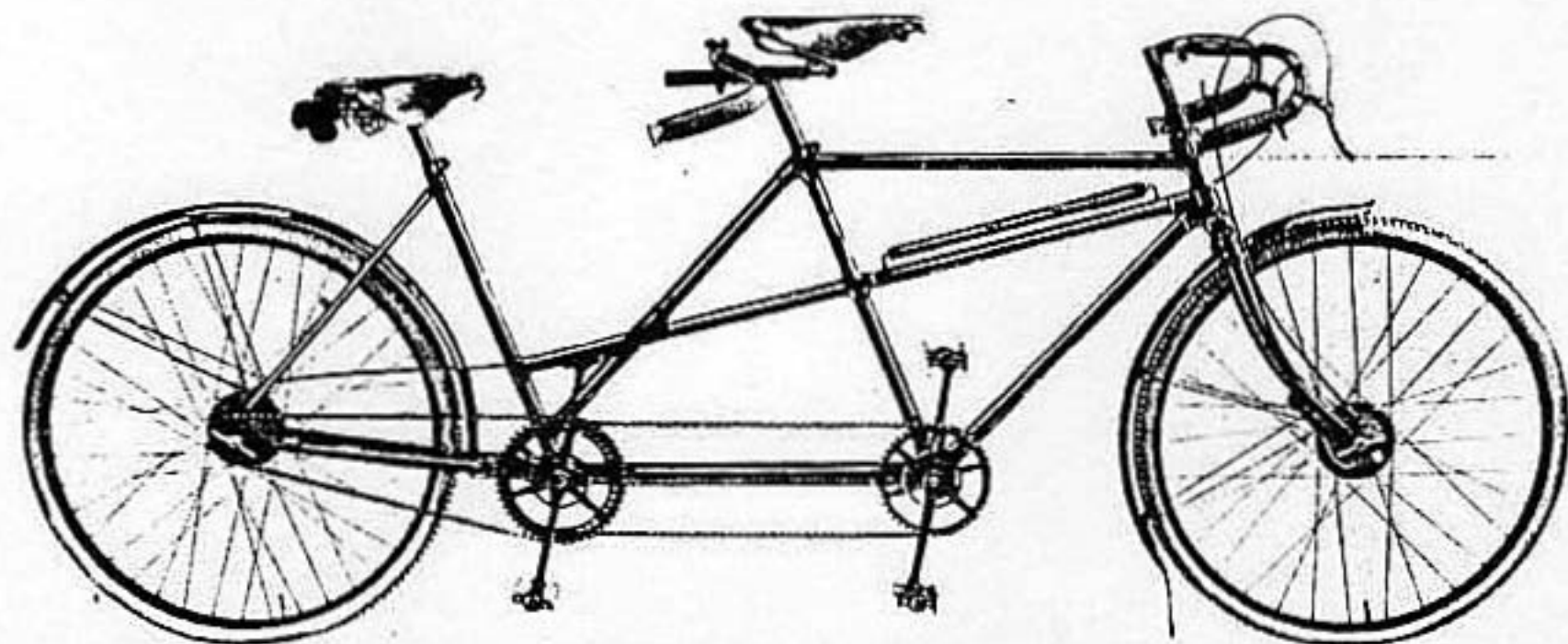
3-Speed chain gear, 30/- extra.

Sturmey-Archer 3-speed Gear, 20/- extra.

Any Model can be supplied on Hire Purchase Terms.

You will both find "Its easier on a Grubb."

Cross Frame Tandem.



Frame sizes to order, with Grubb quick release. Frame and forks built of finest quality steel tubing. 26 x 1 3/4" Dunlop Westwood or Endrick rims. Internal expanding front and rear hub brakes with brazed-on quick release attachments, or tandem front hub, double cog rear with one fixed and one free wheel, and Constrictor tandem front calliper and Pelissier or Cobra "A" quality rear, fitted with cable reverse to give direct pull. Gears to order. Dunlop, Palmer Roadster or Ivory Cord tyres. Race front pedals, lady's rubber rear, or to order. Coventry Elite chains. Marsh front handlebars and

Chater-Lea Fittings . . . £19 : 10 : 0

Grubb Patented Grease Gun Lubrication, 15/- extra.

Sturmey-Archer 3-speed Gear, 20/- extra.

North Road, on adjustable clips, or to order. Constrictor long sponge grips. Brooks' B.17c, B.18 Champion, or B.66c front saddle, and lady's B.18, B.66 or B.75 rear. Bluemel's No-weight mudguards with front extension and stays fitted to brazed-on eyes. Bluemel's "Sterling" pump fitted to brazed-on pegs. Brooks' tool wallet and two spanners. Grubb wing nuts, front and rear. Finish-plated crown and tips of front forks; frame coslettized and enamelled best black (or all-black finish if desired). Approx weight, 49 1/2 lbs.

Brampton Fittings . . . £17 : 10 : 0

3-Speed chain gear, 30/- extra.

Any Model can be supplied on Hire Purchase Terms.

Light Roadster.



£8-15-0

Deferred Terms arranged with
The Grubb Finance Co., Ltd.

£1 Deposit and 12 Monthly Payments of 14/4

Frame sizes, 20, 21 or 22in., 10½in. bracket height. Brampton fittings. Solid slotted front fork ends. Wheels, 26 x 1½in. Dunlop narrow section. Tyres, Dunlop Roadster. Gear, 66 free. Cranks, 6½in. Pedals, Brampton "Dapta." Chain, Brampton. Handlebars, 18in. North Road upturned or flat. Two roller lever brakes, with all brakework brazed on. Saddle, Brook's B.18 standard gent's. Mudguards, Bluemel's No-weight, with front extension and stays fitted to brazed-on eyes. Tools and tool bags. Bluemel's "Sterling" pump and prismatic reflector. Rubber handlebar grips. Special grease gun with screw-on flexible connection and supply of grease. Finish, coslettised and enamelled all black. Approximate weight, 28 lbs.

De Luxe Roadster.

As above, but built with Aircraft Tubing. Constrictor No. 3, Dunlop or Palmer Roadster tyres. Coventry Elite chain. Brooks' B.10 or Terry saddle. Constrictor grips.

Grubb Fittings	£10 15 0
Chater-Lea Fittings	£11 0 0
B.S.A. Fittings	£11 5 0

Any Model can be supplied on Hire Purchase Terms.

Lubricate the "Grubb" way

Path Racing Model



20½ in. frame or to order, built with Aircraft tubes, 11½ in. bracket height.

27 x 13 m/m Bastide rims, Constrictor No. 1 tubulars.

1 in. pitch chain wheel and cog.

Renold block chain.

Cranks, 6½ in., 6¾ in. or 7 in., fluted.

Brooks' Sprinter saddle.

13 in. Marsh bars, or to order, on brazed-up extension, with short rubber sleeves.

Constrictor Boa racing pedals.

Enamelled in wide choice of colours.

No tools, tool bag or pump supplied with this machine.

Weight, 19½ lbs.

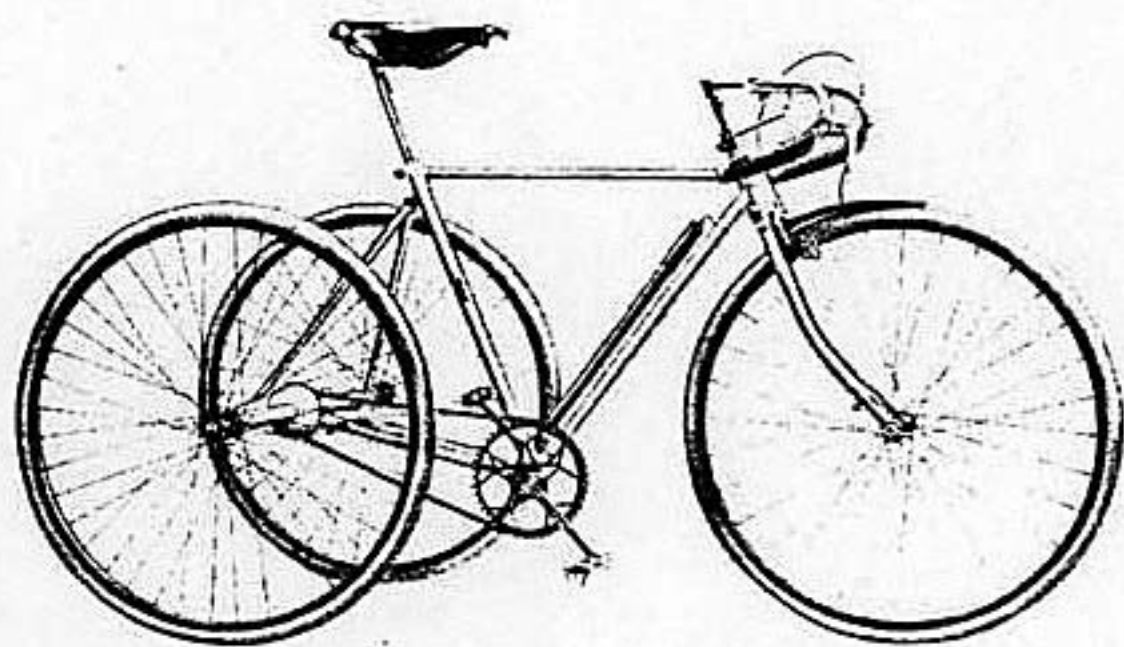
Grubb Fittings - £11 : 0 : 0 B.S.A. Fittings - £11 : 15 : 0

Chater-Lea Fittings - £11 : 10 : 0

Any Model can be supplied on Hire Purchase Terms.

"Grubb's" are always

Racing Tricycle



Frame sizes to order, bracket height 9½ in., or to order.

Wheelbase, 37 in., or to order; standard Abingdon axle (No. 3, 30½ in. over all)—28 in. axle 12'6 extra.

Wheels, 26 or 27 in., Constrictor flat or round reinforced wood rims, No. 3 Constrictor tubulars, or No 50.

Constrictor short or long sponge grips.

Chain, Coventry Elite. Pedals, race. Brake, Pelissier front. Saddle, Brooks' B.17 or B.18 Champion.

Finish—frame and forks coslettized and enamelled black or in wide choice of colours.

Bluemel's "Sterling" pump and Spearpoint extension. Tool bag and tools.

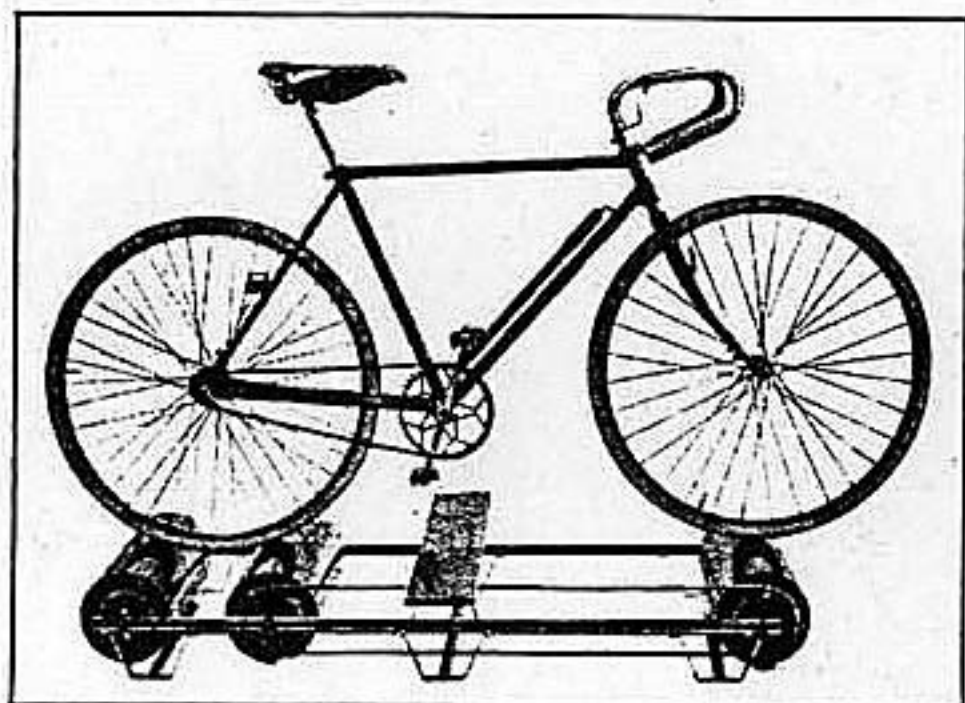
Approx. weight, 28 lbs.

Built of Grubb Fittings	£21	10	0
With Grubb Grease Gun Lubrication						
Built of B.S.A. Fittings	£21	10	0
Chater-Lea Fittings	£21	5	0
Brampton Fittings with Python Tubulars	...			£19	0	0

Grubb Patented Grease Gun Lubrication with B.S.A., Chater-Lea or Brampton Fittings, 10/- extra.,

First Across the Tape.

THE FAMOUS F. H. GRUBB HOME TRAINER



Adjustable to various wheel-bases. Ball bearings.

Very quiet running. You can mount and dismount without assistance. Convenient in use.

Stoved black and beautifully finished.

Not a toy, but a practical aid to the expert.

Sent carriage paid to anywhere in Great Britain.

£3 - 15 - 0 cash, or 15/- Deposit and six monthly payments of 11/3.

The Best is Cheapest

Tandem & Cycle Frames

Including head and bracket bearings, chain wheels,
cranks, seat pillars and brazed-on mudguard and
— reflector eyes, pump pegs and chain hook —

CYCLE FRAMES :

Grubb Fittings £4 17 6
(With Grease Gun Lubrication)

B.S.A. or Chater-Lea Fittings £4 17 6

Brampton Fittings £3 17 6

Frames built of Aircraft Tubing, 5/- extra.

Grubb Patented System of Grease Gun Lubrication,
10 - extra.

TANDEM FRAMES :

“ Double Gents’—

Chater-Lea Fittings £11 0 0

Brampton Fittings £9 10 0

Cross Frame—

Chater-Lea Fittings £11 10 0

Brampton Fittings £10 0 0

Grubb Patented System of Grease Gun Lubrication,
15/- extra.

When ordering frames, give frame sizes, viz., centre of bracket
axle to top of seat lug; wheel sizes, 26 or 27in. by 1in. or 1½in.,
etc.; crank length; size of chain wheel required; make and
width of front and rear hubs over outside of lock nuts.

in the “ Long Run.”

CASH TERMS

All Accessories—Cash, unless ordered with Bicycles, etc. For Frames only and Home Trainers, £1 deposit with order; Bicycles, £2; Tandems and Tricycles, £3. Balance to be sent on receipt of invoice, forwarded whilst machine is being completed.

EASY PAYMENT TERMS.

Frames, £1; Cycles (except where stated otherwise) £2; Tandems, £3 with order. Interest, 10% on balance, payment to be made in 12 consecutive monthly instalments. A rebate of half the interest charged is made for settlement by six consecutive monthly instalments.

TABLE OF GEAR RATIOS.

Number of Teeth on Chn Wheel	No. of Teeth on Hub Cogs	Diameter of Wheel.		Number of Teeth on Chn Wheel	No. of Teeth on Hub Cogs	Diameter of Wheel.	
		26 in.	27 in.			26 in.	27 in.
42	13	84.0	87.4	46	17	70.3	73.0
	14	78.0	81.0		18	66.4	69.0
	15	72.8	75.7		19	63.0	65.4
	16	68.2	70.8		20	59.8	62.0
	17	64.3	66.7		13	96.0	99.7
	18	60.6	63.0		14	89.1	92.5
	19	57.5	59.6		15	83.2	86.4
	20	52.6	56.7		48	16	78.0
44	13	88.0	91.3	17		73.4	76.2
	14	81.7	84.8	18		69.3	72.0
	15	76.2	78.6	19		65.7	68.2
	16	71.5	74.2	20		62.4	64.8
	17	67.2	69.8	13		104.0	108.0
	18	63.5	66.0	14		96.5	100.2
	19	60.2	62.5	15		90.1	93.6
	20	57.2	59.4	52	16	84.5	87.7
46	13	92.0	95.5		17	78.5	82.3
	14	85.4	88.7		18	75.1	78.0
	15	79.7	82.1		19	71.2	74.0
	16	74.7	77.6		20	67.6	70.2