

F. H. GRUBB, LTD.,

"GRUBB WORKS,"
GOULD ROAD, TWICKENHAM.

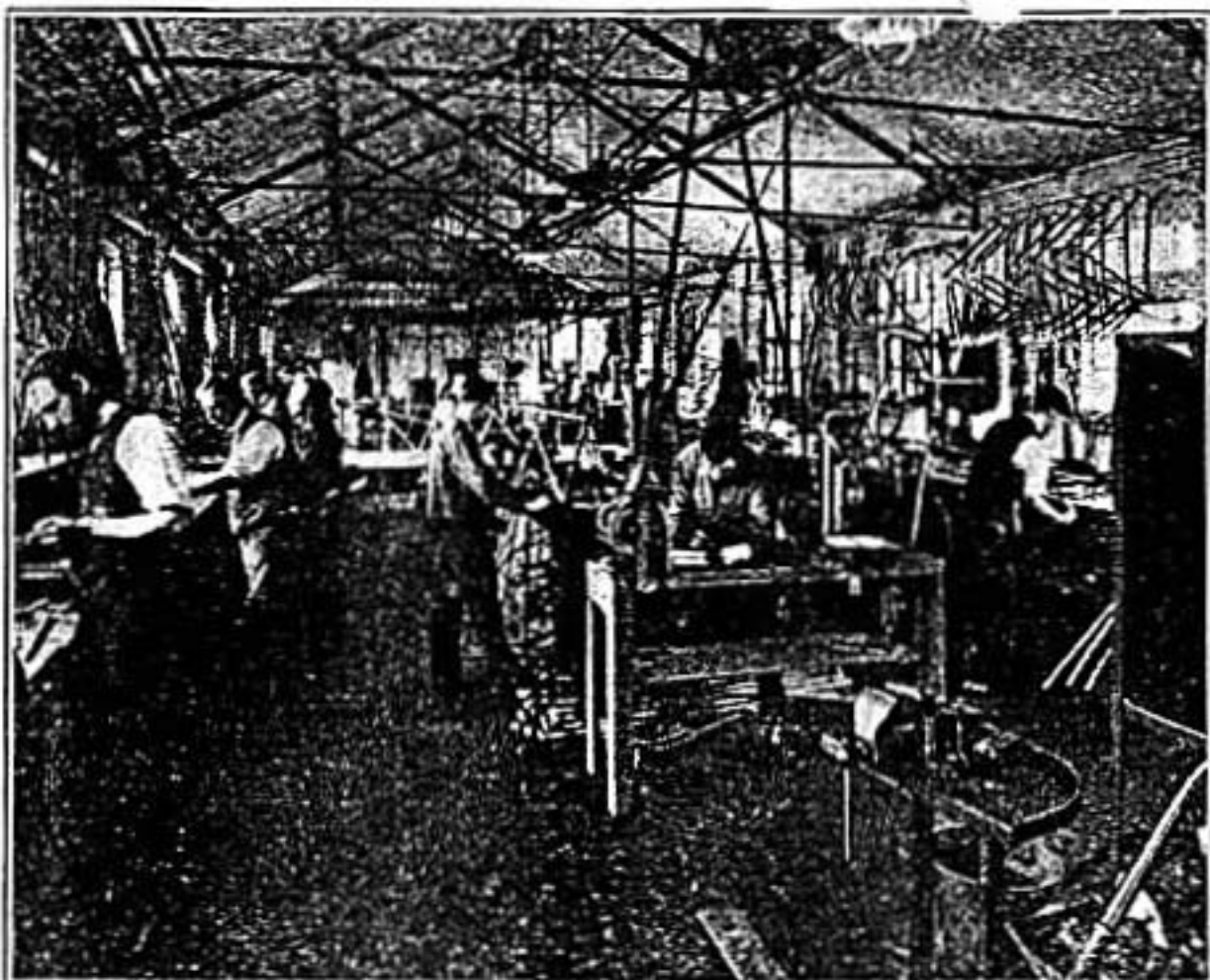
1934 SEASON PROGRAMME.

Pending the issue of our new Season's Catalogue, the following is a Summary of our complete 1934 range of Cycles, Tandems, etc., included in this list and the separate leaflets referred to.

IN SEPARATE LEAFLETS.		Retail Prices.		
		£	s.	d.
" UNIVERSAL." (Gent's and Lady's). Improved specification		6	15	0
" LONDON." See leaflet for 1934 improvements ...		9	10	0
" YELLOW STREAK."		10	15	0
" TWICKENHAM EAGLE " Tandem. Now built of Aircraft Tubing, and reduced in price to... ..		17	0	0
" PULLMAN " Tandem (Replacing the Race Tandem)		16	16	0

Page **IN THIS LIST.**

3	" SPECIAL TOURING." Now built of Chater-Lea fittings throughout (except pedals), Cyclo 3-speed gear, Cyclo hub brakes or Blumfield hubs with front and rear Resilion brakes, Endrick rims, Cyclo solid-centre pedals, celluloid-covered handlebars. The price remains the same at	11	15	0
4-5	" TWICKENHAM." (Gent's and Lady's). Now built of Aircraft tubing. Dunlop "Sprite" tyres, fixed and free gears, front and rear brakes, No-weight guards and other improvements. The price remains the same at	8	0	0
4	" SUPER TWICKENHAM." Discontinued.			
6	NEW " RICHMOND," replacing the £8 15 0 model listed. An All-Black "comfort" machine, 26 x 1½ wheels, fixed and free gears, front and rear calliper brakes, Bluemel's guards, wider saddle and good class equipment throughout ...	7	7	0
7	" SPEED " Models remain the same as listed.			
8-9	" RACE TANDEM " superseded by " PULLMAN " TANDEM as leaflet.			
10	" CROSS-FRAME TANDEM " superseded by " PULLMAN " TANDEM.			
11	" LIGHT ROADSTER." Discontinued.			
12	" PATH RACING " Model. Remains the same.			
13	" RACING TRICYCLE." Remains the same.			



A Section of the Grubb Works,
Frame Building Shop.

GRUBB BICYCLES AND TANDEMS

represent the last word in design, workmanship and materials. These machines are essentially British, but in certain details, where improvement in design or quality is secured by their inclusion, Continental goods

:: are used ::

Special Touring Model.



£11 - 15

Any Model can be supplied
on Hire Purchase Terms.

Frame size to order, built with Aircraft Tubes and Grubb Fittings.* Brazed-on brake parts, adjustable front fork lamp bracket, etc. Dunlop Westwood rims. 26 x 1½ or 1¾ in., on Blumfield hubs. Tyres: Constrictor No. 3 or Fort Dunlop. Gears to order—one fixed, one free. 6½ or 7in. cranks. Solid centre rat-trap pedals, Coventry Elite chain, celluloid-covered bars to order in adjustable clip. Constrictor sponge grips.

Saddle: Brooks' B.17c, S.20 Racer or Terry C.T.C. Bluemel's No-weight guards with extension, McMillan patent front and rear brakes, Bluemel pump and prismatic reflector, Brooks' tool bag, tools, front and rear wing nuts, grease gun with screw feed and flexible connection and supply of grease. parts.

Coslettized and enamelled all black with gold head or with usual bright parts chromium plated. This model can also be supplied with Endrick rims and Constrictor Cobra brakes. Approx. weight, 27½lbs.

* Incorporating grease gun lubrication.

“Unstinted in Finish and Specification.”

Twickenham Model.



£8-0-0

Deferred Terms arranged with
The Grubb Finance Co., Ltd.

13/9 Deposit and 12 Monthly Payments of 13/9

Frame, 19, 20, 21, 22 or 23in. Grubb forward opening quick release. 10½in. bracket height. 42½in. wheelbase. Brampton fittings, Front forks of "A" quality butted steel blades, reinforced, solid slotted ends. Brazed on pump pegs, chain hook, mudguard eyes and adjustable front fork lamp bracket. 26 x 1½in. black Endrick rims, Palmer, Dunlop, John Bull, or Constrictor speed tyres, double cogged hub, fixed gears, 70 and 66. Coventry chain. Brooks' B.18 Champion saddle or Terry Club. Marsh handlebars on adjustable stem, with Shockstop long grips. Bluemel's Featherweight guards. Pelissier front or rear brake. Rear reflector. Bluemel's "Sterling" pump. Tool wallet and tools. Approx. weight, 27lbs. Finish—Frame and Forks coslettised and enamelled black, green, or white, with usual bright parts chromium plated, or everything all black without extra charge.

The Super Twickenham.

Frame sizes and details as above, but built throughout with aircraft tubing. Celluloid-covered handlebars. Brooks' B.17 saddle, Bluemel's No-weight guards and Constrictor front or rear Cobra brake.

£9-0-0

Deferred Terms, 15/7 deposit and 12
Monthly Payments of 15/7.

The Pioneer of the Club

Lily's Twickenham Model.



£8-0-0

Deferred Terms arranged with
The Grubb Finance Co., Ltd.

13/9 Deposit and 12 Monthly Payments of 13/9

Frame, 19, 20, 21 or 22in. 10½in. bracket height. 42in. wheel base. Brampton fittings. Front forks of "A" quality butted steel blades, reinforced, with solid slotted ends. Brazed on mudguard eyes, pump pegs, chain hook, adjustable front fork lamp bracket and reflector eye. 26 x 1½in. black Endrick rims; Palmer Speed, Dunlop, John Bull or Constrictor road racing tyres; double-gear hub with 66 fixed and 63 free gears. Coventry chain. Race pedals, Brooks' B.18 lady's saddle. Bluemel's Featherweight guards with front extension. 16 or 18in. Middleton or North Road drop handlebars in adjustable stem. Front and rear Pelissier brakes. Rear reflector. Wing nuts, front and rear. Bluemel's "Sterling" pump. Tool wallet and tools. Approx. weight, 27½lbs. Finish.—Coslettised and enamelled black, white or green, with usual bright parts chromium plated. Everything all black without extra charge.

Any Model can be supplied on Hire Purchase Terms.

Bicycle at Eight Pounds.

Richmond Mod 1.



£8-15-0

Deferred Terms arranged with
The Grubb Finance Co., Ltd.

15/2 Deposit and 12 Monthly Payments of 15/2

Frame sizes, 19, 20, 21, 22 or 23in., with Grubb forward opening quick release. Brampton fittings. Brazed-on mudguard eyes, reflector eye, brake guides, pump pegs and adjustable front fork lamp bracket. 26 x 1½ or 1¾ Dunlop rims and Dunlop, John Bull, Palmer Roadster or Road Racing tyres. Gears, 67 fixed and 63 free, or to order. Cranks, 6½ or 7in. Rat-trap or rubber pedals. Coventry chain.

Flat handlebars as illustrated or to order with Constrictor grips. Brooks' B.18 Gent's or Champion saddle. McMillan Patent Brakes, front and rear. Bluemel's Featherweight guards with front extension. Bluemel's "Sterling" pump and prismatic reflector. Tool wallet and tools.

Finish.—Rustproofed by "Coslett" process and enamelled all black.

Comfort with Speed

Speed

Model



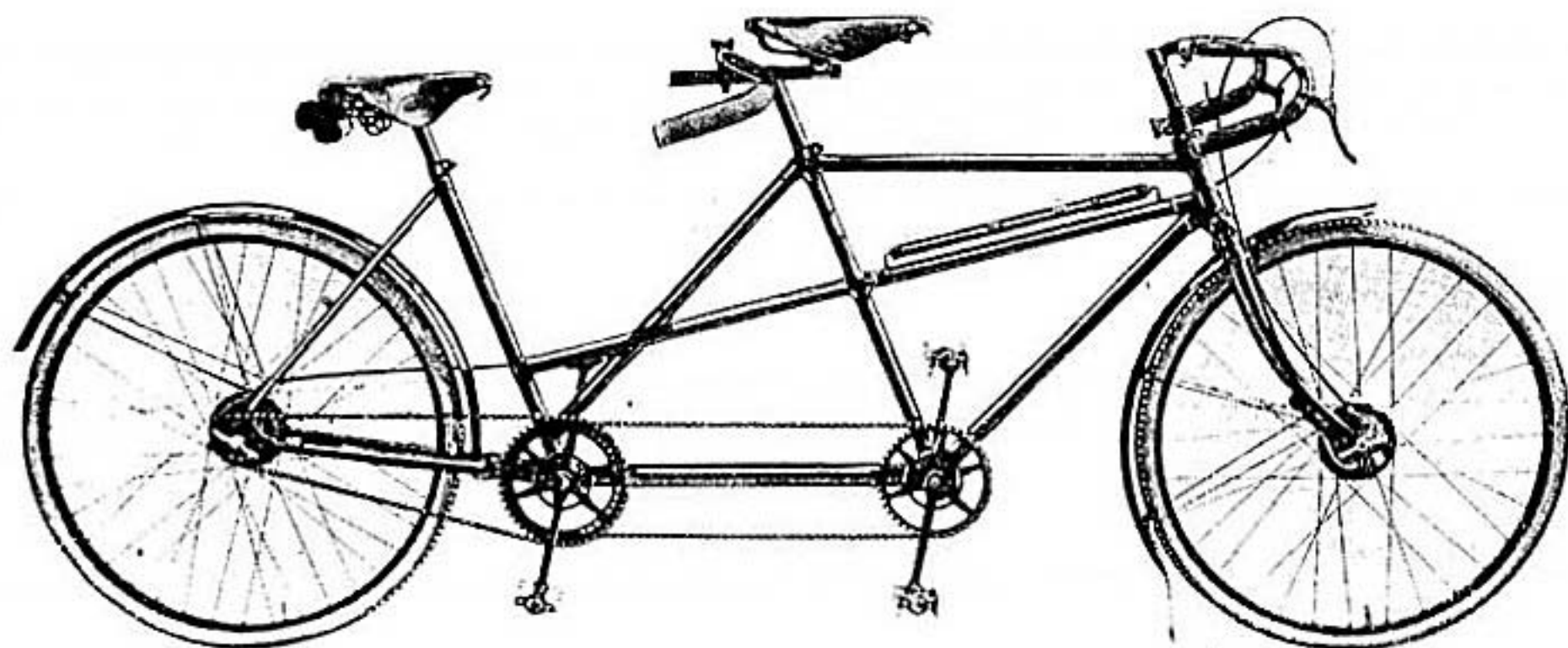
Frame size to order, built with Aircraft Tubes and Grubb quick release. Wheels, 26 or 27in., flat Bastide or round reinforced rims. Butted spokes, double cog hubs with fixed gears to order. Tyres, Constrictor No. 3 or No. 50 Tubulars. Cranks, 6½ or 7in. Pedals, race or rat-trap, 3½, 3¼ or 4in. Chain, Coventry Elite. Saddle, B.17c. Grubb wing nuts, front and rear. Handlebars to order with adjustable clip. Constrictor short or long sponge handlebar grips. Tool bag and tools. Pump, Bluemel's "Sterling." Finish, enamelled in wide choice of colours. Weight 20½lbs.

Grubb Fittings, with grease gun lubrication and Sprints	£11 15 0
Tyres—(With steels, No. 3 Constrictor or Palmer Super Speed, £10 5s. 0d.)		
B.S.A. Fittings and Sprints	£11 15 0
(With steels and No. 3 Covers, etc., £10 5s. 0d.)		
Chater-Lea Fittings and Sprints	£11 10 0
(With steels and No. 3 Covers, etc., £10)		
Brampton Fittings and Sprints, with Python Tubulars and Coventry chain	£9 5 0
Brampton Fittings and Steels with Python Speed, Dunlop Red Road Racing, Palmer or John Bull Speed Covers and Coventry Chain	£7 15 0
Grubb Patented Grease Gun Lubrication with B.S.A., Chater-Lea or Brampton Fittings, 10/- extra.		

Any Model can be supplied on Hire Purchase Terms.

and Speed with Comfort

Cross Frame Tandem



Frame sizes to order, with Grubb quick release. Frame and forks built of finest quality steel tubing. 26 x 13/8 Dunlop Westwood or Endrick rims. Internal expanding front and rear hub brakes with brazed-on quick release attachments, or tandem front hub, double cog rear with one fixed and one free wheel, and "Cantilever" front and rear brakes. Dunlop Tandem or Palmer Paramount tyres. Gears to order. Race front pedals, lady's rubber rear, or to order. Coventry Elite chains. Marsh front handlebars and

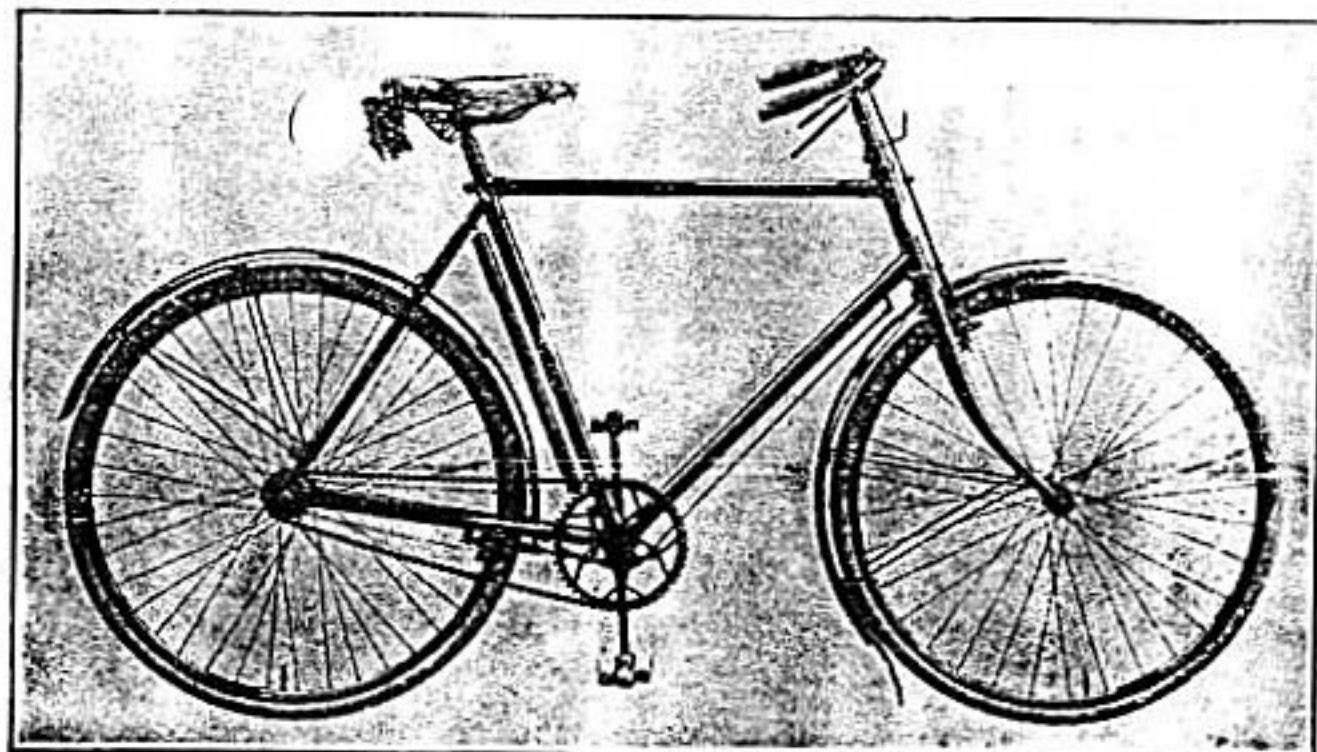
Chater-Lea Fittings - - £19 : 2 : 6

With Chromium plating 10/6 extra.

North Road, on adjustable clips, or to order. Constrictor sponge grips. Brooks' B.17c, B.18 Champion, or B.66c front, and lady's B.18, B.66 or B.75 rear. Bluemel's Featherweight mudguards with front extension and stays fitted to brazed-on eyes. Bluemel's "Sterling" pump fitted to brazed-on pegs. Brooks' tool wallet and two spanners. Grubb wing nuts, front and rear. Finish—frame and forks coslettized and enamelled black with usual bright parts chromium plated—or all-black finish if desired.

Brampton Fittings - - £17 : 0 : 0

Please see list of Tandem extras, including 3-speed Gears, on Page 14.
Any Model can be supplied on Hire Purchase Terms.



Light Roadster. £8-15-0

Deferred Terms arranged with The Grubb Finance Co., Ltd.

15/2 Deposit and 12 Monthly Payments of 15/2

Frame sizes, 20, 21 or 22in., 10½in. bracket height. Brampton fittings. Solid slotted front fork ends. Wheels, 26 x 1½in. Dunlop narrow section. Tyres, Dunlop, Palmer, or John Bull Roadster. Gear, 66 free. Cranks, 6½in. Pedals, Brampton rat-trap or rubber. Chain, Coventry. Handlebars, 18in. North Road upturned or flat. Two roller lever brakes, with all brakework brazed on. Saddle, Brooks' B.18 standard gent's. Mudguards, Bluemel's No-weight, with front extension and stays fitted to brazed-on eyes. Tools and tool bag. Bluemel's "Sterling" pump and prismatic reflector. Rubber handlebar grips. Special grease gun with screw-on flexible connection and supply of grease. Finish, coslettized and enamelled all black. Approximate weight, 28lbs.



**THIS MACHINE is LUBRICATED the
"GRUBB" WAY**

By means of the screw on gun a pressure supply of grease is given to every bearing. Mud cannot enter and the life of your bearings is increased tenfold and sweet running always maintained.

Path Racing Model



20½in. frame or to order, built with Aircraft tubes, 11½in. bracket height.

27 x 13 m/m Bastide rims, Constrictor No. 1 tubulars.

1in. pitch chain wheel and cog.

Renold block chain.

Cranks, 6½in., 6¾in. or 7in. fluted.

Brooks' Sprinter saddle.

13in. Marsh bars, or to order, on brazed-up extension, with short rubber sleeves.

Constrictor Boa racing pedals.

Enamelled in wide choice of colours.

No tools, tool bag or pump supplied with this machine.

Weight, 19½lbs.

Grubb Fittings - £11 : 10 : 0

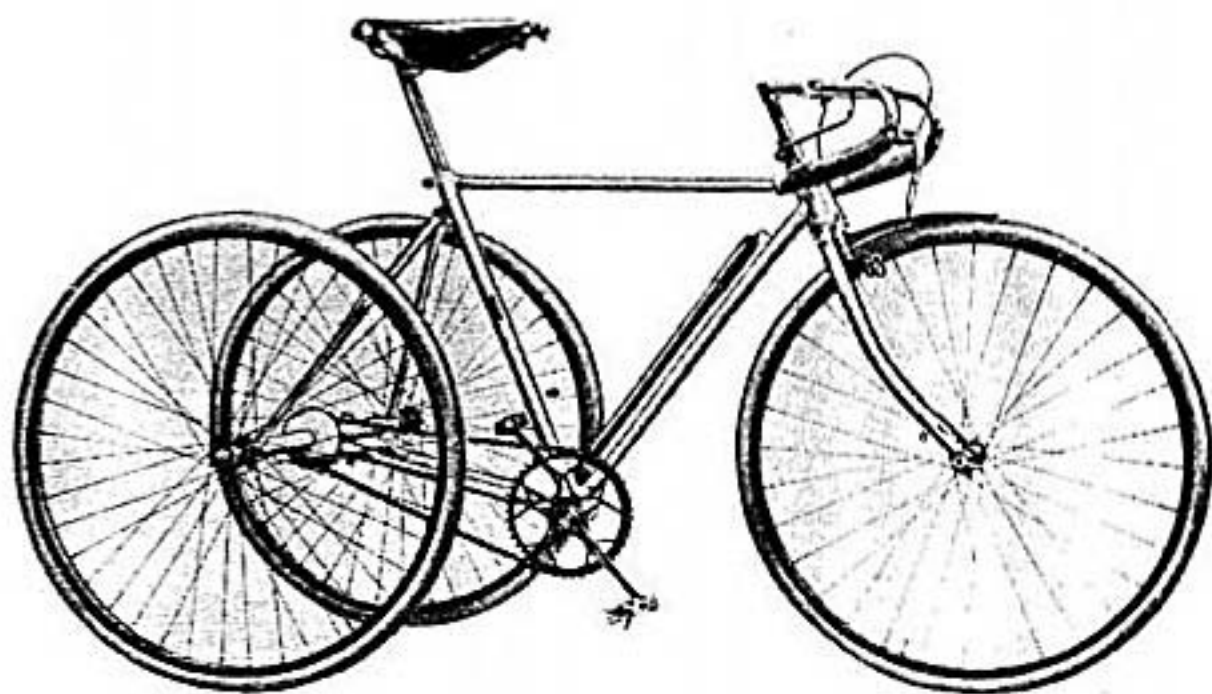
B.S.A. Fittings - £12 : 5 : 0

Chater-Lea Fittings - £12 : 0 : 0

Any Model can be supplied on Hire Purchase Terms.

“Grubb's” are always

Racing Tricycle



Frame sizes to order, bracket height $9\frac{1}{2}$ in., or to order.

Wheelbase, 37in., or to order; standard Abingdon Axle (No. 3, $30\frac{1}{8}$ over all)—28in. axle, 12/6 extra.

Wheels, 26 or 27in., Constrictor flat or round reinforced wood rims, No. 3 Constrictor tubulars, or No. 50.

Constrictor short or long sponge grips.

Chain, Coventry Elite. Pedals, race. Brake, Pelissier front. Saddle, Brooks' B.17 or B.18 Champion.

Finish—frame and forks coslettized and enamelled black or in wide choice of colours.

Blumel's "Sterling" pump and Spearpoint extension. Tool bag and tools.

Approx. weight, 28lbs.

Built of Grubb Fittings	£21	10	0
With Grubb Grease Gun Lubrication						
Built of B.S.A. Fittings	£21	10	0
Chater-Lea Fittings	£21	5	0
Brampton Fittings with Python Tubulars	£19	0	0

First Across the Tape.

Additional Equip ent.

	£	s.	d.
SPECIAL TOURING MODEL.			
Cyclo 3-speed chain gear, with brazed-on parts	1	12	0
Sturmey-Archer 3-speed hub, with combined internal expanding hub brake, in place of double cog hub and rear brake	1	1	0
Internal expanding front and rear hub brakes		7	6

LADIES' AND GENTS' TWICKENHAM MODEL.

Cyclo 3-speed chain gear, with brazed-on parts	1	12	0
Sturmey-Archer 3-speed hub, with combined internal expanding hub brake	1	7	6
Internal expanding front and rear hub brakes	1	5	0
Grease gun lubrication		10	0
Terry C.T.C. Saddles		2	6
Celluloid-covered handlebars		2	0

SUPER TWICKENHAM MODEL.

Cyclo 3-speed chain gear, with brazed-on parts	1	12	0
Sturmey-Archer 3-speed hub, with combined internal expanding hub brake	1	7	6
Internal expanding front and rear hub brakes	1	2	0
Grease gun lubrication		10	0
Terry C.T.C. saddle		2	6

RACE TANDEM and LADY-BACK TANDEM.

Cyclo 3-speed chain gear, with brazed-on parts	1	14	0
Sturmey-Archer 3-speed hub, with combined internal expanding hub brake, in place of rear calliper	1	6	0
Sturmey-Archer 3-speed hub	1	0	0
Grease gun lubrication		15	0
Terry C.T.C. saddles (2)		5	0
Celluloid-covered handlebars (2)		4	0
Brazed-on front fork lamp bracket, in addition to head lamp bracket	1	1	6

OTHER EXTRAS ON REQUEST.

Tandem & Cycle Frames

Including head and bracket bearings, chain wheels, cranks, seat pillars and brazed-on mudguard and — reflector eyes, pump pegs and chain hook —

CYCLE FRAMES :

Grubb Fittings £4 17 6
(With Grease Gun Lubrication)

B.S.A. or Chater-Lea Fittings £4 17 6

Brampton Fittings £3 17 6

Frames built of Aircraft Tubing, 5/- extra.

Grubb Patented System of Grease Gun Lubrication,
10/- extra.

TANDEM FRAMES :

Double Gents'—

Chater-Lea Fittings £11 0 0

Brampton Fittings £9 10 0

Cross Frame—

Chater-Lea Fittings £11 10 0

Brampton Fittings £10 0 0

Grubb Patented System of Grease Gun Lubrication,
15/- extra.

SPECIAL PATH FRAMES (as per Page 12) :

Grubb Fittings ...	}	£5 10 0
B.S.A. Fittings ...		
Chater-Lea Fittings		

Built of Aircraft Tubing, specially lightened lugs, cranks and seat pillar.
Built to your design if desired.

When ordering frames, give frame sizes, *viz.*, centre of bracket axle to top of seat lug; wheel sizes, 26 or 27in. by 1in. or 1½in., etc.; crank length; size of chain wheel required; make and width of front and rear hubs over outside of lock nuts.

The Best is Cheapest in the "Long Run."

CASH TERMS.

All Accessories—Cash, unless ordered with Bicycles, etc. For Frames only and Home Trainers, £1 deposit with order; Bicycles, £2; Tandems and Tricycles, £3. Balance to be sent on receipt of invoice, forwarded whilst machine is being completed.

EASY PAYMENT TERMS.

Hire Purchase Terms, where not stated, will be quoted on receipt of your detailed specification. We shall be pleased to consider your own proposal without obligation on your part.

TABLE OF GEAR RATIOS.

Number of Teeth on Chn Wheel	No. of Teeth on Hub Cogs	Diameter of Wheel.		Number of Teeth on Chn Wheel	No. of Teeth on Hub Cogs	Diameter of Wheel.		
		26 in.	27 in.			26in.	27in.	
42	13	84.0	87.4	46	17	70.3	73.0	
	14	78.0	81.0		18	66.4	69.0	
	15	72.8	75.7		19	63.0	65.4	
	16	68.2	70.8		20	59.8	62.0	
	17	64.3	66.7		13	96.0	99.7	
	18	60.6	63.0		14	89.1	92.5	
	19	57.5	59.6		15	83.2	86.4	
	20	52.6	56.7		48	16	78.0	81.0
	13	88.0	91.3			17	73.4	76.2
	14	81.7	84.8			18	69.3	72.0
15	76.2	78.6	19	65.7		68.2		
44	16	71.5	74.2	20		62.4	64.8	
	17	67.2	69.8	13		104.0	108.0	
	18	63.5	66.0	14		96.5	100.2	
	19	60.2	62.5	15		90.1	93.6	
	20	57.2	59.4	52		16	84.5	87.7
	13	92.0	95.5			17	78.5	82.3
	14	85.4	88.7		18	75.1	78.0	
	15	79.7	82.1		19	71.2	74.0	
	46	16	74.7		77.6	20	67.6	70.2