

## EXTRAS WHICH MAY BE SPECIFIED

(Purchase Tax, which is payable where the extras apply to a complete cycle is shown in brackets).

	£	s.	d.	s.	d.
Flamboyants on silver lustre base	11	0		(2)	8
Checked band on seat tube 5", any two enamels. In place of ordinary one colour band	8	3		(2)	0
Diamond panel to seat tube. In place of ordinary band	3	6		(10)	
Three 2" colour bands to seat tube. In place of ordinary one colour band	2	6		(7)	
Full Continental style panelling throughout from	1	7	6	(6)	8
Enamelling all head, in contrasting colour, including approx. 2' of top and down tubes finishing in spearpoints. (La Quelda only)	11	0		(2)	8
Enamelling head tube only in contrasting colour. Where not standard (Brazed frames)	8	3		(2)	0
Flamboyant head tube to brazed frame. Where contrasting head tube is not standard	10	6		(2)	7
Where contrasting head tube is standard	2	3		(7)	
Lining edges of all lugs in contrast	13	9		(3)	4

### CHROME PLATING

As you probably know the Government has recently prohibited the use of nickel as the base for chrome plating. We are pleased that we can, however, offer chrome on a copper base, which has the same appearance but may not be quite so durable. This chrome, which is limited to items given below, can, therefore, not be guaranteed and can only be offered whilst regulations remain as at present.

Front fork crown on copper base (see note)	6	8		(1)	11
Front and rear ends approx. 6" ...	1	1	4	(5)	2
Front and rear drop-out plates only	14	0		(3)	5

**N.B.—FRAME SETS** quoted in this list, include the best Continental or British Head and Bracket fittings ( $\frac{1}{8}$ " diameter bearings top and bottom) all as available. Alloy seat pillar and adjustable lamp bracket.

*Usual brazed on fittings — Gear boss and stops if required.*

# 1952 HOLDSWORTH CYCLES



"Sandy" holding the watch at the finish of a Road Event.

**"THE BEST FOR ALL  
TYPES OF CYCLING"**

W. F. HOLDSWORTH, "Sandy" to thousands of cyclists has been a life-long devotee to the great game of cycling.

When a lad he took part in the racing game. Since he became not so nimble he has maintained his keen interest in all phases of the pastime. As a tourist at home and abroad, in club life and as an official he has kept in touch with all the latest trends of cycling.

Designs and specifications are discussed with members of the staff who are active riders and you can safely rely upon a really sound and workmanlike job from "Sandy."

HEAD OFFICE AND MAIL ORDER:

138/140 BECKENHAM ROAD  
BECKENHAM - KENT

BRANCHES:

132 LOWER RICHMOND ROAD,  
PUTNEY, S.W.15.

69 Highbury Park, N.S.  
(nr. Arsenal F.C.)

and there is probably an Agent in YOUR Town



## LA QUELDA

THE MOST FAMOUS WELDED CYCLE

"531" Reynolds tubing welded and finished to absolutely clean lines and measurements as "CYCLONE".

Complete specification as follows:

William's C.34 Chain Wheel Set; Dunlop High Pressure Rims and Tyres, built on Bayliss Wiley famous 9 and 10 Hubs; Two "G.B." Alloy Brakes; "Allez" Alloy pedals; Pelissier, Maes or Binda Alloy Bends on "G.B." 2½" Alloy Extension; Brooks B.17 Saddle; Coventry Chain; Bluemel Guards and Pump.

*Finished in any colour Lustro or Enamel, double lined or lug-lined band to seat tube.*

**Frame Set - £13 2 6**

Complete Cycle, including £6 7 8 P. Tax **£31 5 10**

## TUBING

ALL HOLDSWORTH'S Frames are built from BEST BRITISH TUBING—Reynold's "531", the High Carbon Steel or "KROMO" Accles and Pollock's Chrome Molybdenum. These produce light, responsive, but sturdy frames and should not be confused with the much inferior tubing used in so many of the imported Continental frames.



## LA VARIABLE

A cycle for the young enthusiast, fitted with a gear, suitable for all types of Club life—Time Trials, Massed Start, Club riding.

You can take this cycle out in any company, confident that it will be appreciated by the "heads" and envied by your other club-mates.

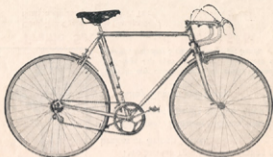
Sound design, Specification as "Typhoon", but fitted with the famous SIMPLEX Tour de France gear, the double roller job—quick changing and light in weight or the All-British BENELUX gear. Gear boss and stops brazed on. Good, clean and neat appearance.

Finish in any colour enamel to choice; hand-lined head lugs, top eyes and crown. Complete set of transfers, including 5 coloured Olympic bands.



**Frame Set** - £11 9 0

**Complete Cycle, Inc. £5 19 5 P. Tax** £30 9 5



## TORNADO

I have introduced this model to cater for the man who likes to specialise in the massed-start game.

The Tornado combines the latest Continental ideas with good honest British workmanship.

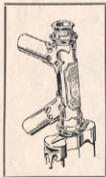
Built throughout with Reynolds "531" or Kromo tubing, the seat stays are a fine taper and the chain stays are also tapered for full tyre clearance.

Continental style drop-outs are fitted for speed in changing. Fine oval taper fork blades with a solid Continental fancy crown.

Brazed on fittings consist of 18" pump pegs, Continental guard eyes, Gear Boss and stops. (No lamp bracket boss unless requested).

Sizes are 21 $\frac{1}{2}$ ", 22 $\frac{1}{2}$ " or 23 $\frac{1}{2}$ ". Frame designed with low bracket (10 $\frac{1}{2}$ " with 27" wheels) parallel head and seat tubes, 72°, and long back so that the utmost advantage can be obtained from use of 8 or 10 speed gears.

You can have your Tornado finished in almost any colour Lustre or Enamel, lugs lined and contrasting band to seat tube.



**Frame Set - £15 10 0**

# TRICYCLE CONVERSION SET



HOLDSWORTH'S TRICYCLE CONVERSION SET enables any cyclist to taste the joys of tricycling without being put to the expense of ordering a Tricycle. Many sets are in use all over the Kingdom and they have secured National Records. During the past year we have supplied a set for attachment to a tandem which has enabled a middle-aged lady to take her blind husband out; others who have been disabled or suffering from the effects of Infantile Paralysis can once more participate in the joys of the open road.

Details as follows—:

Direct Drive by shaft mounted on annular bearings to near-side wheel—very rigid and responsive—offside wheel runs free. Overall width from cone to cone 28ins., will go through most doors and conforms to modern tricycle design.

Bracket — Height reduced by 1 inch.

Finished in Gold Lustre Enamel. (Other colours 7/6 extra.)

Fitted to any machine in a very few minutes as follows: Loosen clamping bolt to release off-side wheel complete with stub axle. Pass through rear triangle of frame; replace off-side wheel. Tighten clamping bolt. Adjust  $\frac{1}{2}$ " bolts to rear ends of frame, passing them through packing pieces provided. Adjust telescopic seat stays to frame height. Fix to seat bolts and ALL IS READY!

PRICE £13 2 6

with Endricks, Sprite or Pixie Tyres.



H.P.'s and Alloy Rims can be supplied as available.



## TYPHOON

This is a Holdsworth which is within the reach of the man who must watch his expenditure. I would insist, however, that this is a hand built product of Holdsworth's Workshops and will excite admiration in any company.

Reynolds or Kromo tubing. Continental fancy cut out lugs. Oval to round Fork blades with  $2\frac{1}{4}$ " rake. Angles,  $73^\circ$  head,  $71^\circ$  seat.

The equipment includes such world famous items as Brook's B.17 saddle, William's C.34 chain set, so deservedly popular.

27" x  $1\frac{1}{4}$ " Dunlop high pressure rims built into British Hub Co.'s Sivada or Bayliss-Wiley 9/10 hubs. Dunlop Skin-Sided Speedy H.P. tyres and tubes.

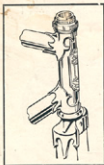
Perry chain and Holdsworth's famous Allez Quill pattern pedals.

Two San Giorgio Genuine Italian Alloy brakes or British "G.B."

Chrome, Pelissier, Binda, Maes or South of France bends on G.B. alloy stem.

Alloy Guards and Pump.

Finish in any colour enamel to choice; hand-lined head lugs, top eyes and crown. Complete set of transfers, including 5 coloured Olympic bands.



**Frame Set - £11 5 6**

**Complete Cycle to this fine specification, including £5 9 8 P. Tax £27 19 8**

# The **WHIRLWIND**

**FOR THE MAN WHO KNOWS — FOR YOU !**

The "Last Word" in frame production. Built regardless of cost for you who must have "THE BEST".

Individually designed to your own specification or, if you prefer, we will advise from our long experience.

The tubing can be either Reynolds famous high-carbon "531" or Kromo, the latest Accles & Pollock Chrome Molybdenum.

Lugs and tubing are hand picked and the finest craftsmen, with years of experience in Holdsworth's Workshops, give of their best and enjoy showing what they can do when given a free hand.

**RIDE THE  
WHIRLWIND  
with HOLDSWORTH**



Top-eyes fitted to the  
WHIRLWIND



**Frame Set - - £17 17 0**

*In any Lustre, Flamboyant or Enamel finish, lined and contrasting panel to your requirements but excluding chrome*

**COMPLETE CYCLE as specification on La Quelda - £35 2 3**

*(Including Purchase Tax to £6 17 7)*



The Log-work on the  
WHIRLWIND Frame

## “SANDY’S” IDEAL SPECIFICATION

If I were asked for a specification which would include everything of the best, I should say that the following would produce a cycle which couldn't be beaten and would be the envy of all knowledgeable riders.

To a “WHIRLWIND” frame I would fit wheels built with “F.B.” Italian Large Flange hubs, Scherens Rims and fitted with D’Alessandro “Imperforabile” Tubulars. Transmission would be by Chater chain-set and Renold Elite chain. The saddle would, of course, be a Brooks and I would choose the new “Swallow” cutaway type on alloy frame. Bars would be Aerts on an “Allez” hand-made steel stem with head cut away and picked out in red enamel. The two brakes G.B. Coureur with “Mafac” levers.

I wonder how nearly this is to your ideal—anyway, I bet that the lads’ and lasses’ eyes would bulge when you rolled up to the clubroom on the above outfit.



THE NEW ROAD-PATH MODEL

## ZEPHYR



This is a frame which will specially appeal to the many who mix track and short-distance road work. Built on the lines of Holdsworth's well-known Path machines, parallel head and seat tubes 73°, but bare guard clearance and slightly increased fork rake make it equally suitable for the short distance road specialist who mixes such rides with grass or hard track work.



The same first class tubing and workmanship as on other Holds. worth's.

Lugs cut out to "Coronet" pattern ornated with "Windows." The ultra-modern wrap-over top eyes. Of course we fit the exclusive W.F.H. Heavy Plate Path Ends, giving the full 2" slot adjustment, manufactured from the best quality mild steel for a really sturdy job.

Finished to your choice in Lustré, Flamboyant or Enamel. Lined lugs and contrasting band to seat tube.

**Frame Set - £15 15 0**

Complete Cycle as specification on La Quella including £6 9 3 P. Tax £24 19 6



## CYCLONE

ROAD OR TRACK MODEL

My most popular model during the past five years, the "Cyclone" has proved its worth up and down the country for road racing and Club riding. The 73° head and 71° seat with 22½" top tube, bracket height, 11" with 27" wheels, produce an easily handled frame which can be ridden in comfort and at speed.

Usual brazed fittings with Continental drop-outs. "531" or Kromo tubing, solid steel forged crown.

*Finished in any colour Lustré or Enamel, double lined or lugs lined, band to seat tube.*

**Frame Set - £14 7 6**

## CYCLONE LADIES

Special DIAMOND FRAME model of the Cyclone for the speedy girl. This model is specially designed so that the girl club rider can have the short top tube and smaller frame so necessary for her comfortable riding without losing the ease of steering and liveliness of the customary design.

Short top tube 21½" for easy reach. Angles, head 72°, seat 73°.

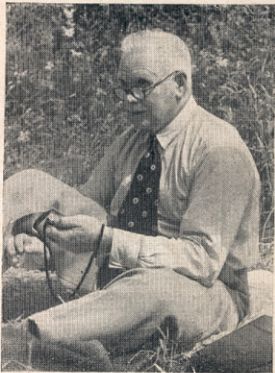
Bracket height 10½" with 27".

*Other details as for Cyclone.*

**Frame Set - £14 7 6**

Complete Cycle as specification on La Quella including £6 5 10 P. Tax £22 3 5





*“Sandy” holding the watch at the finish of a Road Event.*